

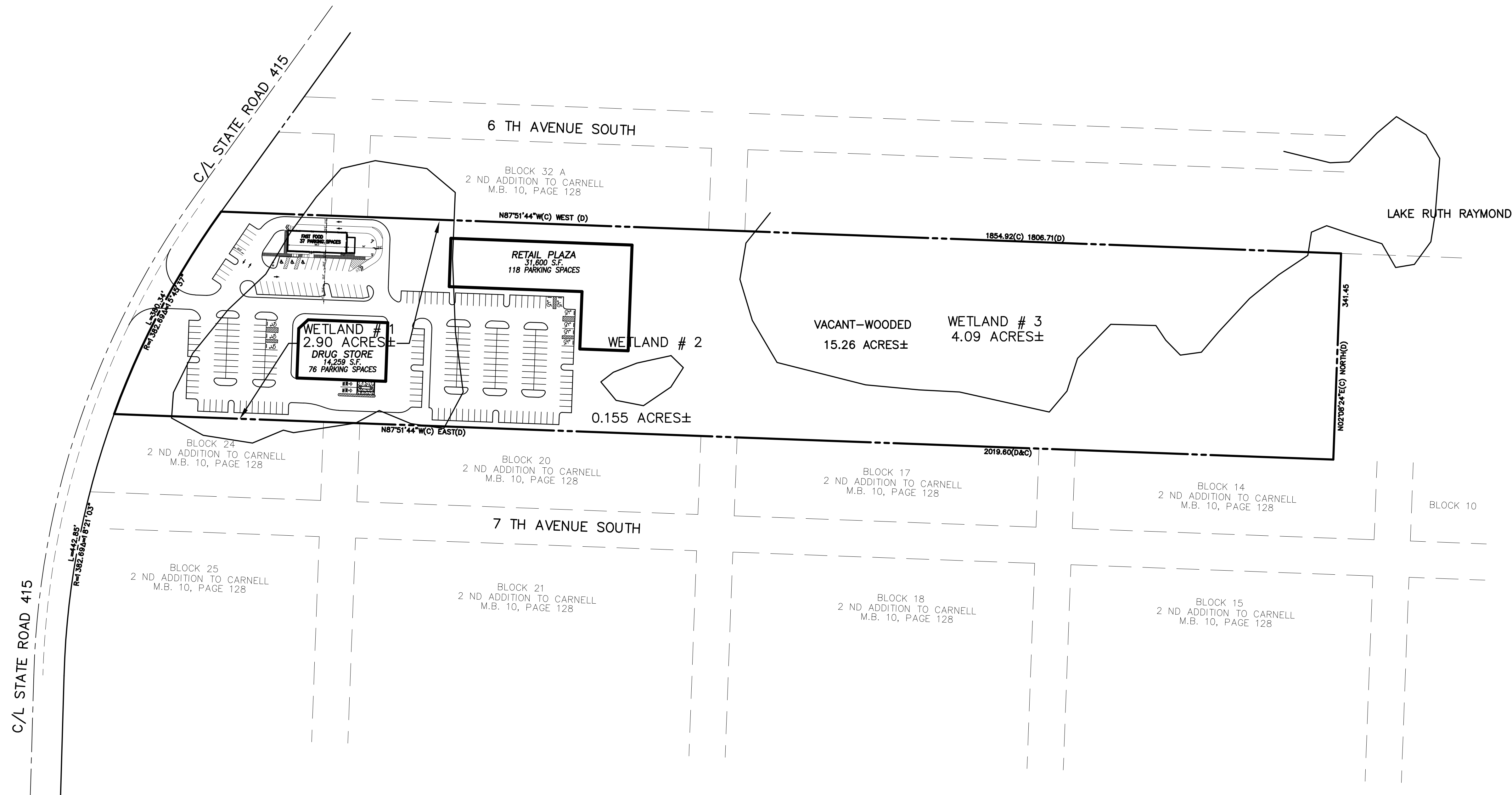
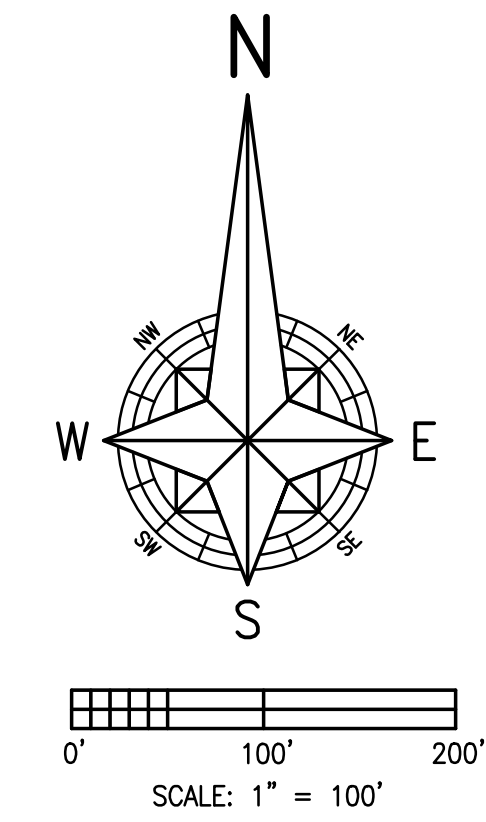
SECTION 6, TOWNSHIP 19 SOUTH, RANGE 32 EAST
VOLUSIA COUNTY, FLORIDA

REAL PROPERTY DESCRIPTION

STARTING AT A POINT ON THE NORTH LINE OF SECTION 6, TOWNSHIP 19 SOUTH, RANGE 32 EAST, 1060.4 EAST OF THE NORTHWEST CORNER OF SAID SECTION 6; THENCE RUN SOUTH A DISTANCE OF 1901.2 FEET TO THE POINT OF BEGINNING; THENCE RUN EAST A DISTANCE OF 2019.5 FEET; THENCE RUN NORTH 341.45 FEET; THENCE RUN WEST A DISTANCE OF 1806.71; THENCE WITH AN ANGLE 58°10' FEET TO LEFT, RUN THENCE IN A SOUTHWESTERLY DIRECTION 401.9 FEET TO THE POINT OF BEGINNING, LESS AND EXCEPT THAT PART UNDERLYING STATE ROAD 415, VOLUSIA COUNTY, FLORIDA.

WETLAND ENCROACHMENT

WETLAND #1	127,041 S.F.	2.92 ACRES
WETLAND #2	0 S.F.	0 ACRES
WETLAND #3	0 S.F.	0 ACRES



DATE:	NOVEMBER 12, 2004
SCALE:	1" = 100'
DESIGNED:	THS
DRAWN:	SCM
CHECKED BY:	THS
JOB NO.:	04340
EMAIL:	tomskelton@bellsouth.net

REVISIONS	DATE	CHECKED

AMERICAN CIVIL ENGINEERING CO.
 207 N. MOSS ROAD, SUITE 211 WINTER SPRINGS, FLORIDA 32708
 PHONE: (407) 327-7700, FAX (407) 327-0227
 CERTIFICATE OF AUTHORIZATION NO.: 00009729

SITE PLAN
S.R. 415
RETAIL PLAZA
 VOLUSIA COUNTY, FLORIDA

THOMAS H. SKELTON, PE
 REGISTRATION NO. 42752