

WALGREENS AT DELTONA

CITY OF DELTONA - VOLUSIA COUNTY, FL

FINAL SITE PLAN

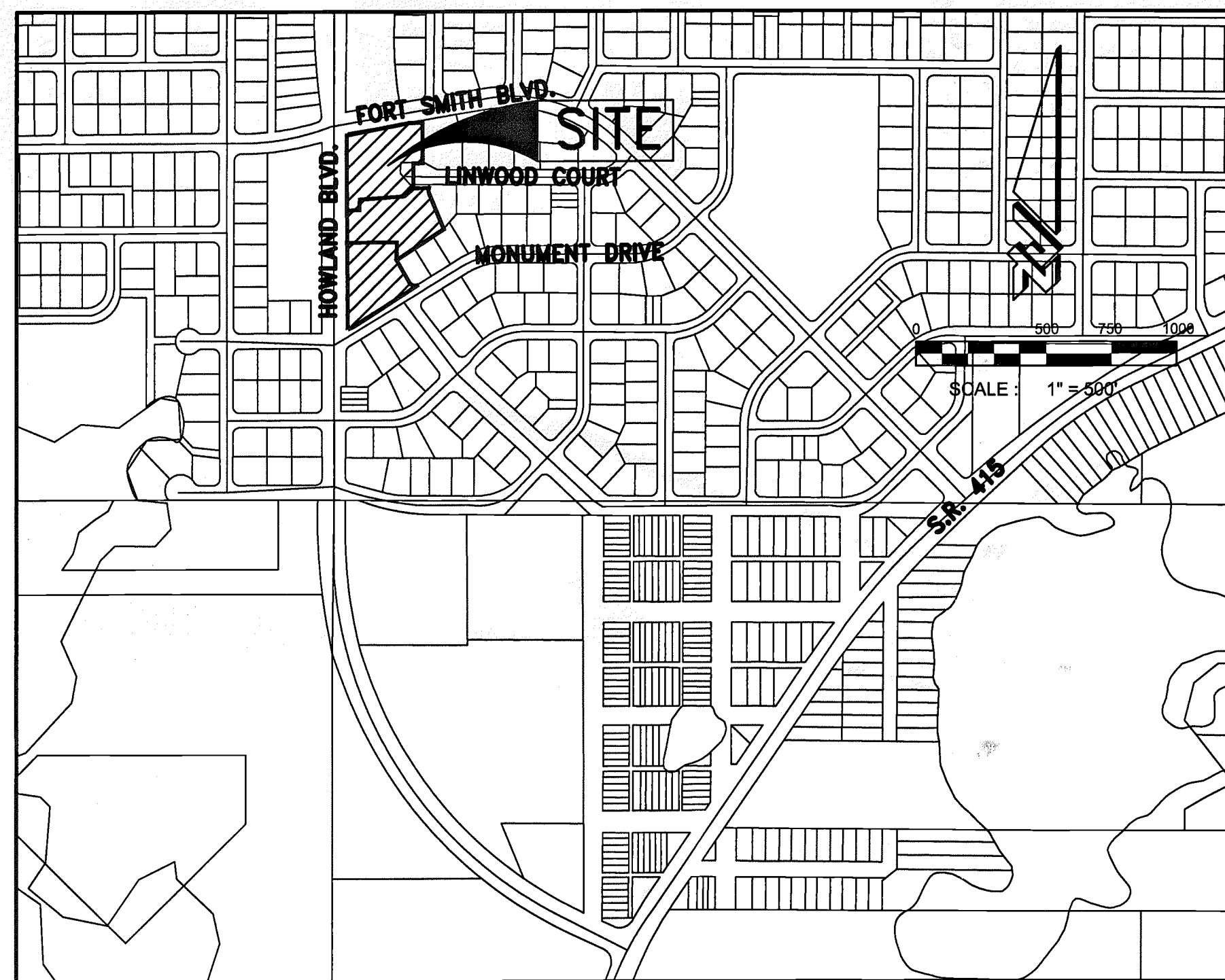
SURVEYOR: SHANNON SURVEYING, INC.
499 NORTH S.R. 434
SUITE 2153
ALTAMONTE SPRINGS, FL 32174
(407) 774-8372
(407) 682-6655 (FAX)
CONTACT: JIM SHANNON, PLS

ENGINEER: ZEV COHEN & ASSOCIATES, INC.
300 INTERCHANGE BLVD.
ORMOND BEACH, FL., 32174
(386) 677-2482
(386) 677-2505 (FAX)
CONTACT: JEFF JACKSON, P.E.

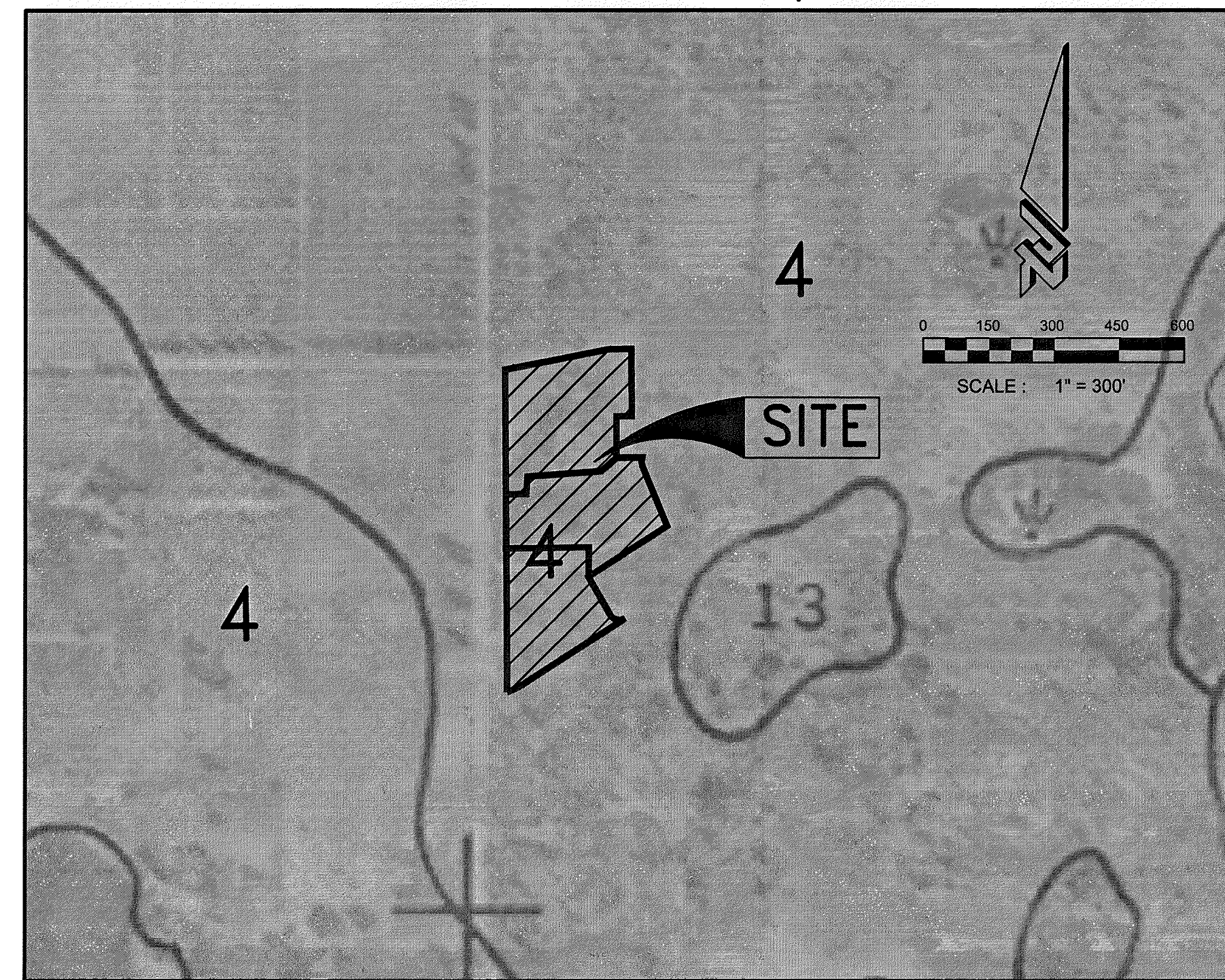
DEVELOPER: THE FERBER COMPANY
151 SAWGRASS CORNERS DRIVE
SUITE 202
PONTE VEDRA BEACH, FL 32082
(904) 285-7600
(904) 280-8443 (FAX)
CONTACT: PAUL FERBER/BUCK SPOCK

GEOTECH: UNIVERSAL ENGINEERING
911 BEVILLE ROAD
SUITE C
SOUTH DAYTONA, FL 32119
(386) 756-1105
(386) 760-4067 (FAX)
CONTACT: BRIAN POHL, P.E.

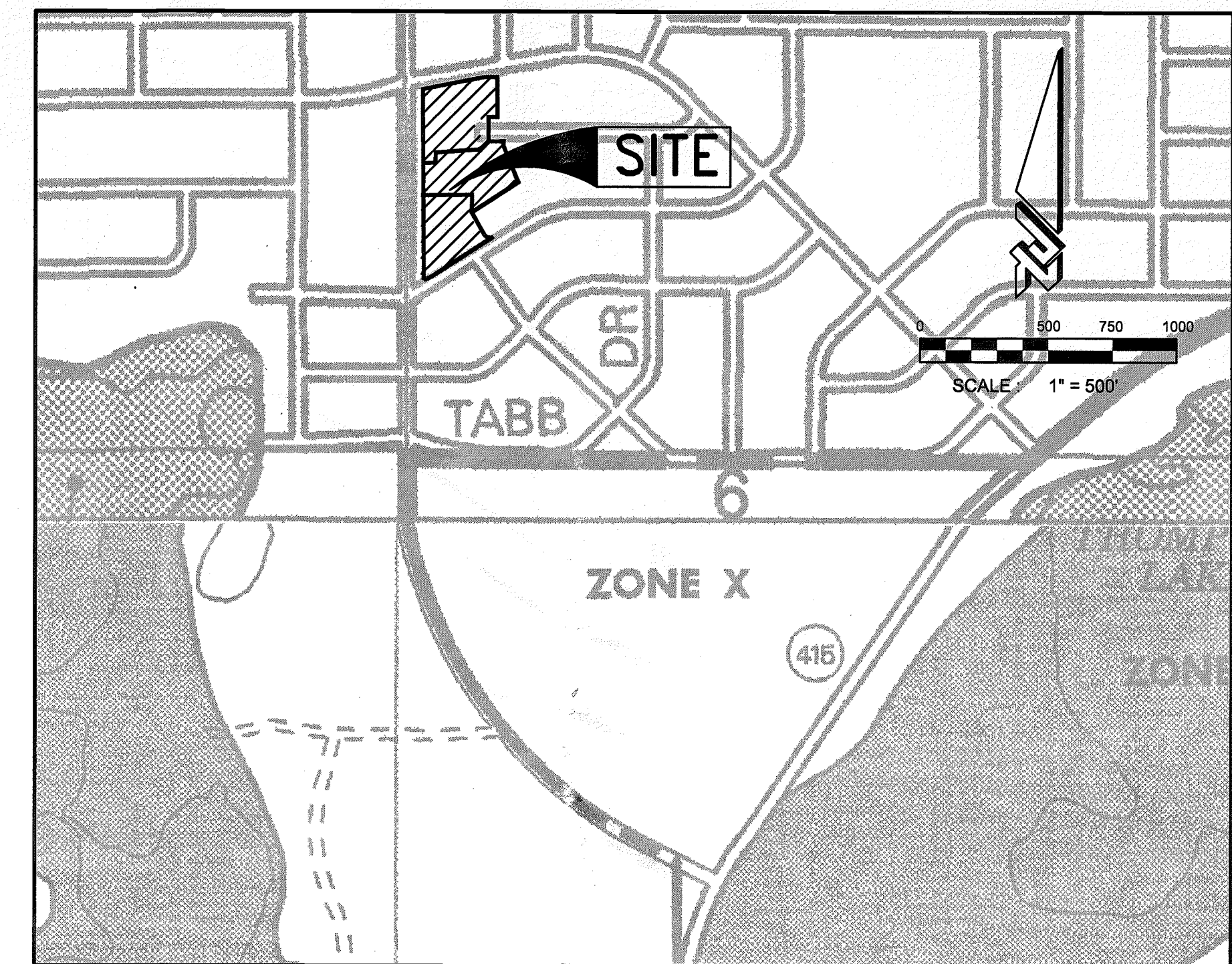
OWNER: THE DMB TRUST DATED DECEMBER 31, 1992
3733 UNIVERSITY BLVD. WEST 115 A
JACKSONVILLE, FL 32717
(904) 733-1202
CONTACT: HARLAN HELMING



VICINITY MAP
SCALE: 1" = 500'



SOILS MAP
SCALE: 1" = 300'
4 - ASTATULA FINE SAND



FLOOD MAP
SCALE: 1" = 500'
FIRM # 12127C0650 G
FLOOD ZONE: (X)

LEGAL DESCRIPTION:

TRACT "C" AND LOT 11, BLOCK 1303 OF DELTONA LAKES UNITY SIXTY-TWO, ACCORDING TO THE PLAT THEREOF AS RECORDED IN MAP BOOK 28, PAGES 95 THROUGH 99, INCLUSIVE, PUBLIC RECORDS OF VOLUSIA COUNTY, FLORIDA

SITE DATA:

PARCEL NUMBERS:	8130-62-00-0030 (4.228) AC. 8231-02-00-0110 (0.178) AC.
PROPERTY AREA:	4.406 AC.
ROW VACATION:	0.0617 AC.
ROW DEDICATION:	0.0227 AC.
TOTAL PROJECT AREA:	4.445 AC.
EXISTING ZONING:	C1 - RETAIL COMMERCIAL
MINIMUM LOT AREA:	10,000 SQ. FT. (0.23) AC.
FRONT YARD SETBACK:	25 FEET
REAR YARD SETBACK:	15 FEET
SIDE YARD SETBACK:	15 FEET
SUBDIVISION DATA:	
PROPOSED LOT A (WALGREENS SITE)	76,822SF (1.76) AC. - 100%
BUILDING PROPOSED	14,820 SF (0.34 AC.) - 19.3%
PARKING REQUIRED	66 14,820/100 x 4.44 = 66 SPACES INCLUDING 3 HC SPACES
PARKING PROPOSED	66
PROPOSED USE	C1-RETAIL COMMERCIAL
IMPERVIOUS AREA	57,935 SF (1.33 AC.) - 75.6%
PROPOSED LOT B	64,884SF (1.49) AC. (100%)
IMPERVIOUS AREA	6,223 SF (0.143 AC.) - 9.6%
PROPOSED ROADWAY	6,223 SF (0.143 AC.) - 9.6%
PROPOSED LOT C	52,077SF (1.20) AC.- 100%
IMPERVIOUS AREA	7,286 SF (0.167 AC.) - 13.9%
PROPOSED ROADWAY	7,286 SF (0.167 AC.) - 13.9%

NOTE: THERE ARE NO KNOWN HISTORIC OR ARCHAEOLOGICAL SITES ON THIS PROPERTY.

SHEET INDEX:

- C1 COVER SHEET
- C2 CONSTRUCTION NOTES
- C3 CLEARING & EROSION CONTROL PLAN
- C4 SITE LAYOUT PLAN
- C5 PAVING, GRADING, & DRAINAGE PLAN
- C6 UTILITY PLAN
- C7 LIFT STATION DETAILS
- C8 MAINTENANCE OF TRAFFIC DETAILS
- C9 CONSTRUCTION DETAILS
- C10 CONSTRUCTION DETAILS
- C11 CONSTRUCTION DETAILS
- C12 CONSTRUCTION DETAILS
- C13 CONSTRUCTION DETAILS

115187-1

RECEIVED IN PALATKA
FEB 14 2008
SIRWMD - PDS



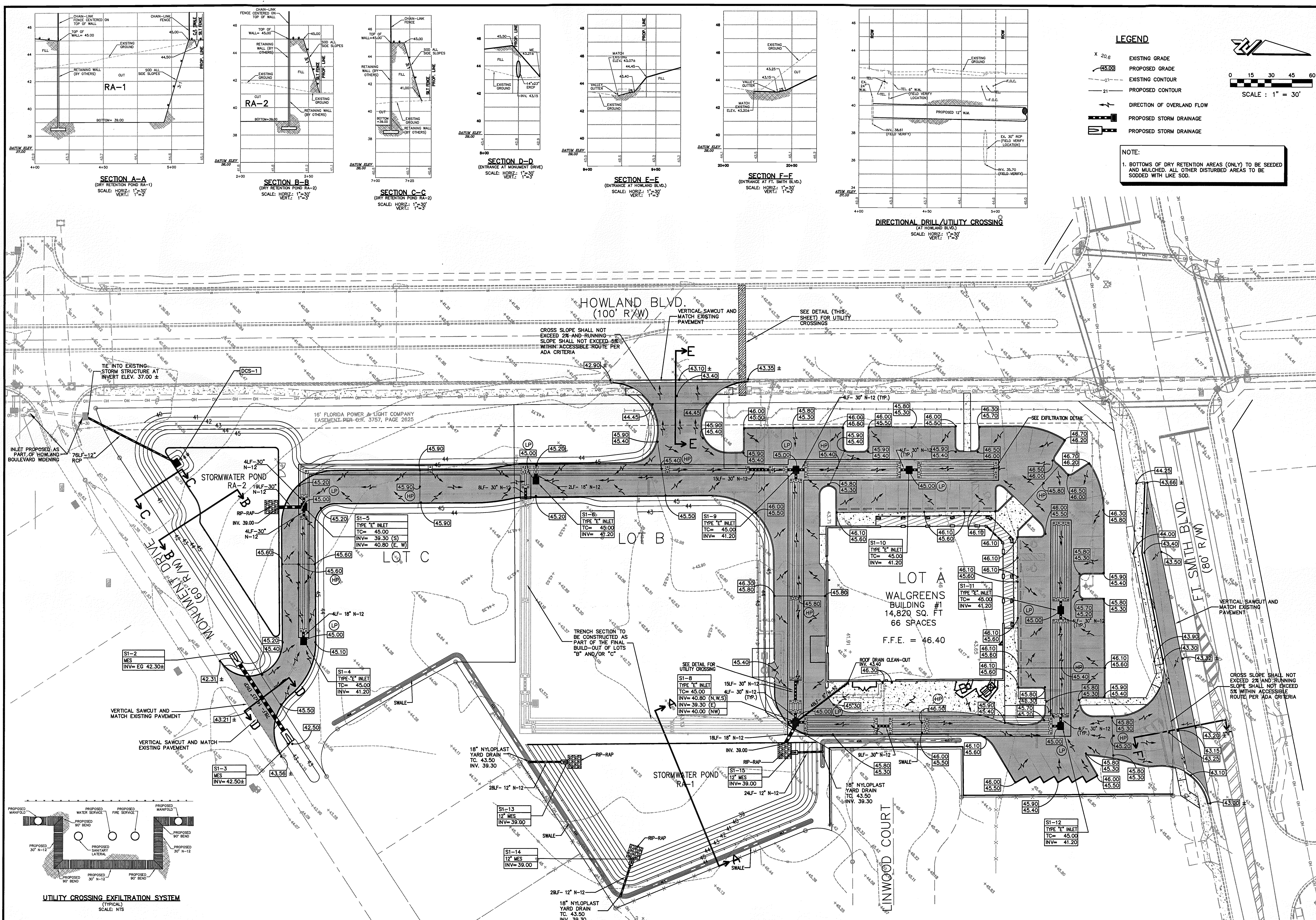
ORMOND BEACH
300 INTERCHANGE BLVD. ORMOND BEACH, FL 32174
(386) 677-2482 FAX (386) 677-2505
ST. AUGUSTINE
4475 U.S. 1 S. SITE #601 ST. AUGUSTINE, FL 32086
(904) 797-1610 FAX (904) 797-4159
AMELIA ISLAND
402 CENTRE ST. FERNANDINA BEACH, FL 32044
(904) 491-4548 FAX (904) 261-7979

WALGREENS AT DELTONA
FINAL SITE PLAN

COVER SHEET

ZEV COHEN & ASSOCIATES, INC.
CIVIL ENGINEERS • LANDSCAPE ARCHITECTS
PLANNERS • TRANSPORTATION • ENVIRONMENTAL
WWW.ZEVCOHEN.COM
PROJECT NO: 08138
ISSUE DATE: 01-25-08
DESIGNED BY: JJ
DRAFTED BY: SSF
CHECKED BY: MDD
DRAWING FILE: 071830V
APP: 15/01/08/01 10:58:16

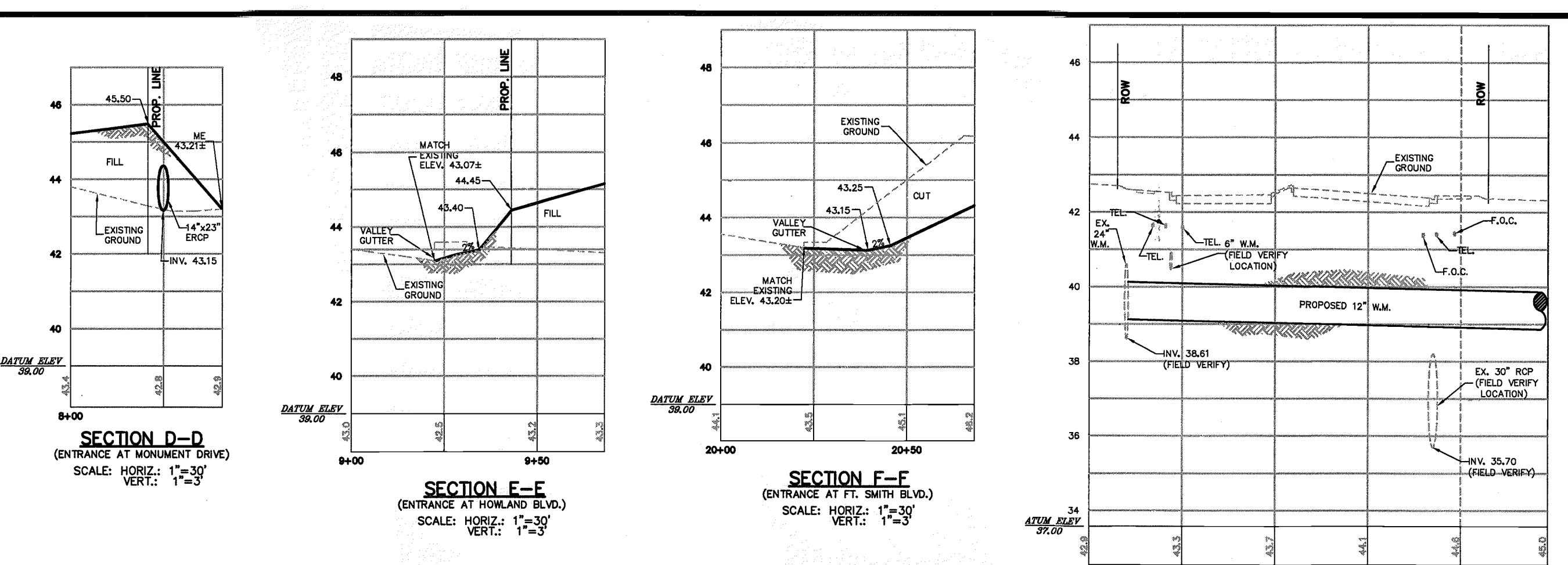
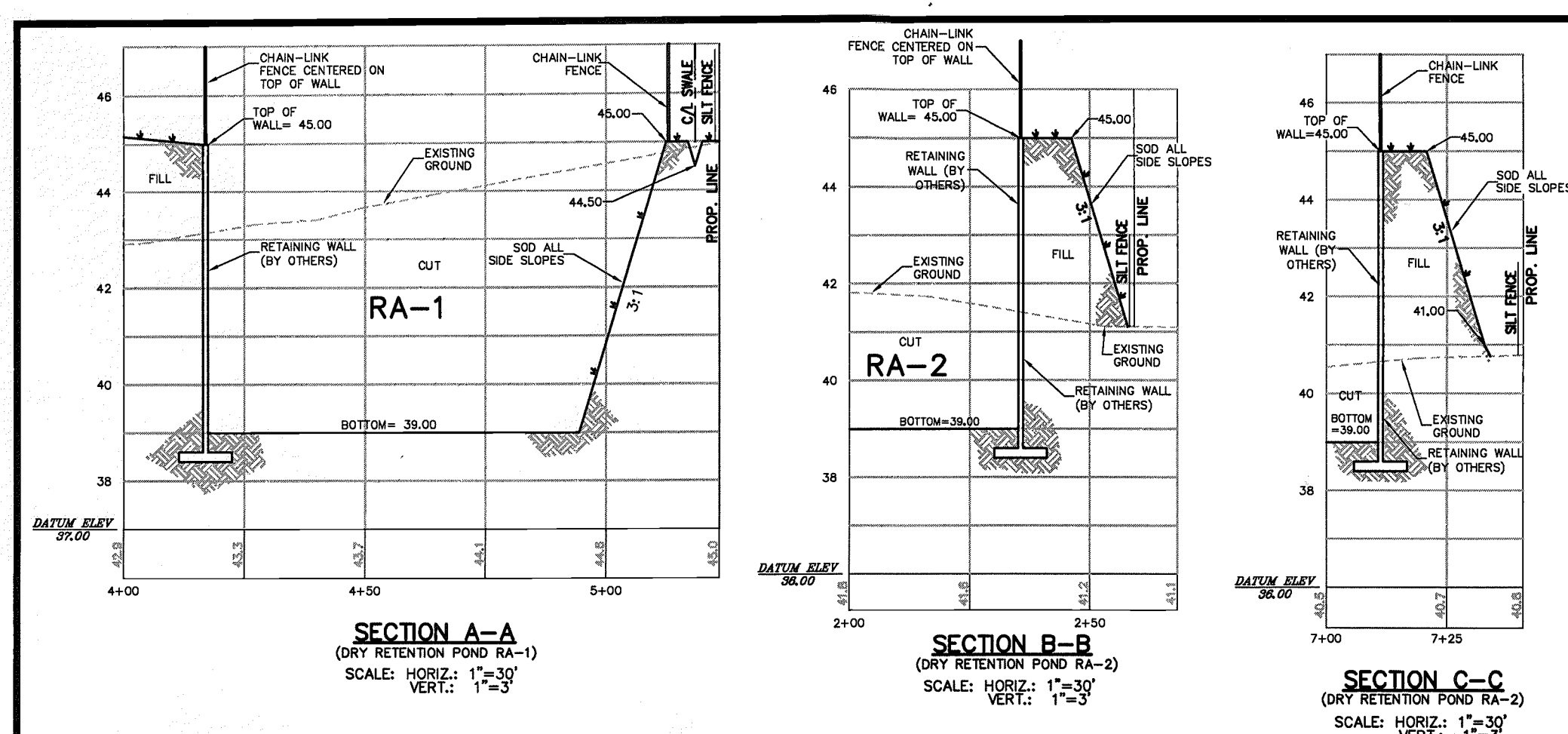
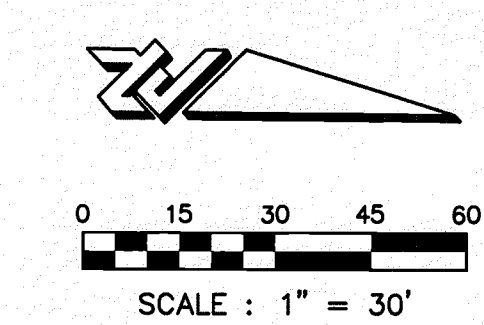
FILE LOCATION
FEB 9 7 2008
NOT VALID WITHOUT EMBOSSED SEAL
SCALE: VARIES
SHEET C1 OF 13



LEGEND

- X 20.6 EXISTING GRADE
- 45.00 PROPOSED GRADE
- - - - - EXISTING CONTOUR
- - - - - PROPOSED CONTOUR
- DIRECTION OF OVERLAND FLOW
- PROPOSED STORM DRAINAGE
- PROPOSED STORM DRAINAGE

NOTE:
 1. BOTTOMS OF DRY RETENTION AREAS (ONLY) TO BE SEEDED AND MULCHED. ALL OTHER DISTURBED AREAS TO BE SOEDED WITH LIKE SOD.



**WALGREENS AT DELTONA
 FINAL SITE PLAN**

PAVING, GRADING & DRAINAGE PLAN

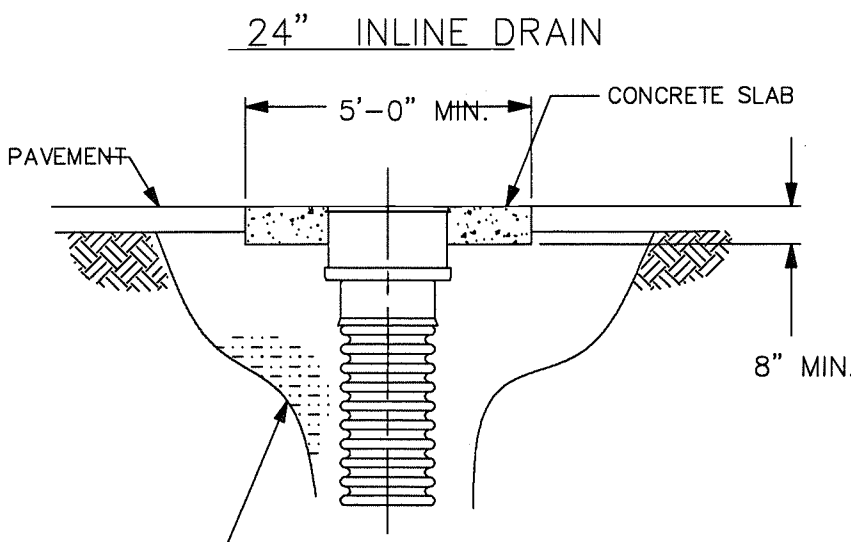
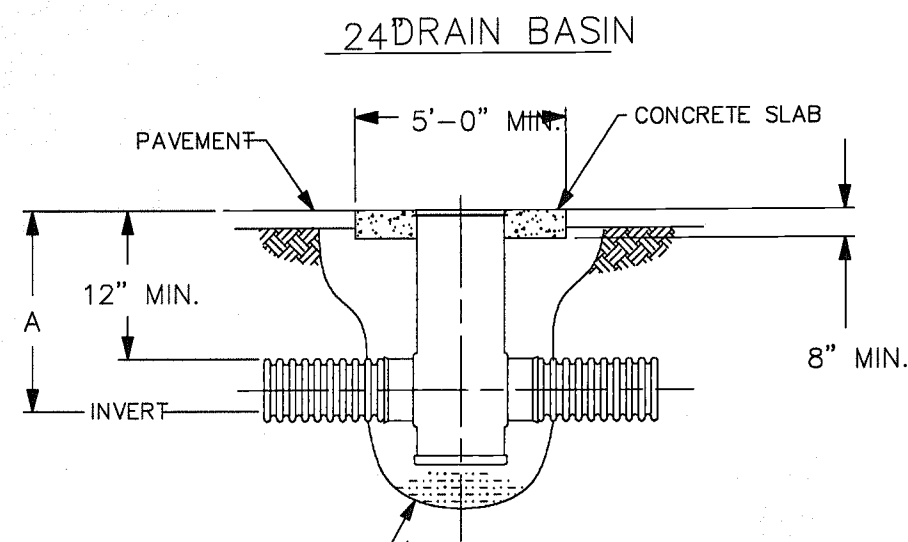
CITY OF DELTONA

ZEV COHEN & ASSOCIATES, INC.
 CIVIL ENGINEERS • LANDSCAPE ARCHITECTS
 PLANNERS • TRANSPORTATION • ENVIRONMENTAL

PROJECT NO: 0518 DRAFTED BY: SFJ
 ISSUE DATE: 01-26-08 CHECKED BY: MDD
 DESIGNED BY: JJ DRAWING FILE: 0518P08
 REF: 0518BAS 0518TBS

FILE LOCATION:
 NOT VALID WITHOUT EMBOSSED SEAL
 SCALE: 1"=30'
 SHEET **C5** OF 13

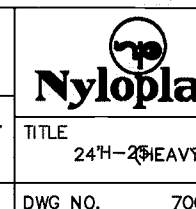
115187-1 - RECEIVED IN PALATKA
 FEB 07 2008
 FEB 14 2008



PIPE SIZE	A (ADS N-12 PIPE)
4"	17.00"
6"	19.00"
8"	21.00"
10"	24.00"
12"	26.00"
15"	29.00"
18"	32.00"
24"	39.00"

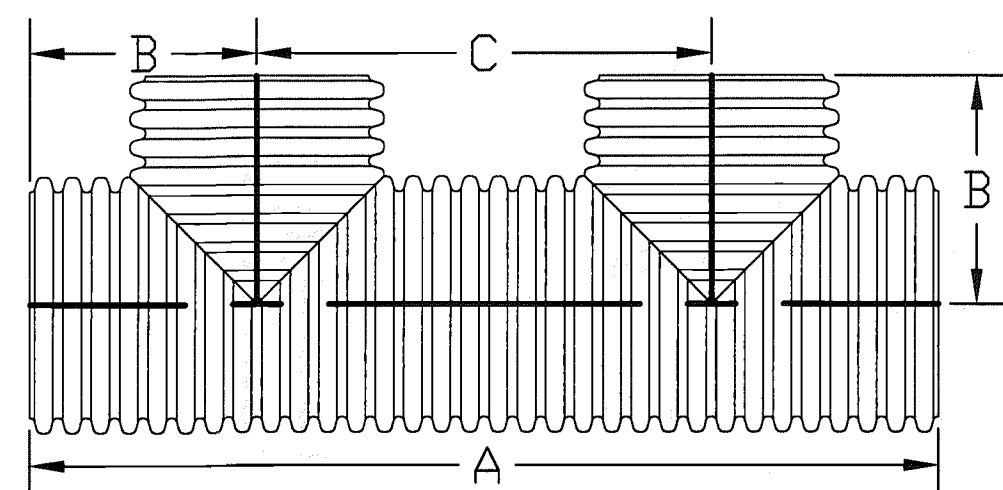
THIS PRINT IS THE PROPERTY OF ADVANCED DRAINAGE SYSTEMS, INC. (ADS) AND IS LOANED TO YOU FOR THE PROJECT SPECIFICALLY IDENTIFIED HEREON. IT IS NOT TO BE REPRODUCED, COPIED, OR TRANSMITTED IN ANY FORM OR BY ANY MEANS, ELECTRONIC OR MECHANICAL, INCLUDING PHOTOCOPYING, RECORDING, OR BY ANY INFORMATION STORAGE AND RETRIEVAL SYSTEM. ANY UNAUTHORIZED REPRODUCTION OR TRANSMISSION IS STRICTLY PROHIBITED AND WILL BE PROSECUTED TO THE FULL EXTENT OF THE LAW. ALL RIGHTS ARE RESERVED.

DATE: 18AUG00
 APP'D BY: CJA
 DATE: 19FEB01
 DWG. SIZE: A
 SCALE: 1:100
 SHEET: 1 OF 1
 DWG. NO.: 7001-110-053 REV. D



310 5700A AVE.
 BURLINGAME, CA 94010
 PH: (415) 433-2443
 FAX: (415) 433-2442
 WWW.ADS-DRAINAGE.COM

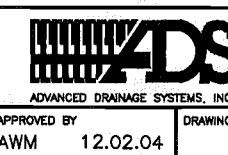
STORMTECH® DOUBLE MANIFOLD



PART #	PIPE SIZE	CHAMBER SIZE	A	B	C
0652AN7406	6 in (150 mm)	SC-740	114.00 in (2896 mm)	28.50 in (724 mm)	56.98 in (1447 mm)
0852AN7408	8 in (200 mm)	SC-740	113.28 in (2877 mm)	28.32 in (719 mm)	56.64 in (1439 mm)
1052AN7410	10 in (250 mm)	SC-740	113.40 in (2890 mm)	28.35 in (720 mm)	56.70 in (1440 mm)
1252AN7412	12 in (300 mm)	SC-740	115.20 in (2926 mm)	28.80 in (732 mm)	57.60 in (1463 mm)
1552AN7415	15 in (375 mm)	SC-740	113.96 in (2895 mm)	28.49 in (724 mm)	56.98 in (1447 mm)
1852AN7418	18 in (450 mm)	SC-740	112.56 in (2859 mm)	28.14 in (715 mm)	56.28 in (1430 mm)
2452AN7424	24 in (600 mm)	SC-740	113.40 in (2890 mm)	28.35 in (720 mm)	56.70 in (1440 mm)

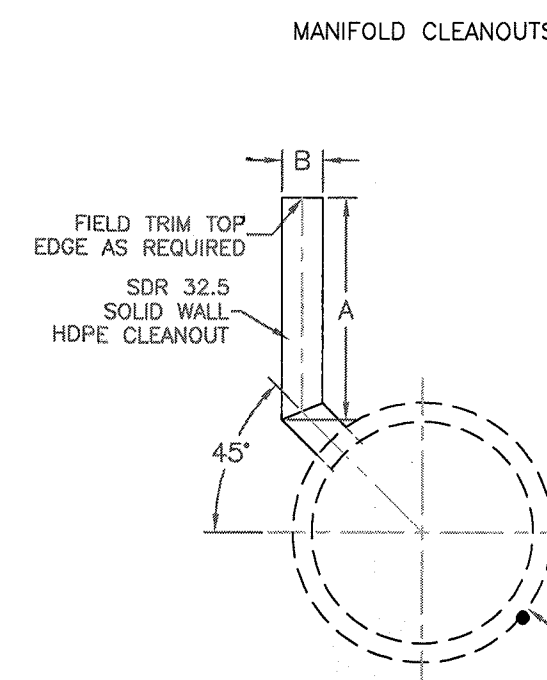
PART #	PIPE SIZE	CHAMBER SIZE	A	B	C
0652AN3106	6 in (150 mm)	SC-310	78.54 in (1995 mm)	19.64 in (499 mm)	39.27 in (997 mm)
0852AN3108	8 in (200 mm)	SC-310	78.72 in (1999 mm)	19.68 in (500 mm)	39.40 in (1001 mm)
1052AN3110	10 in (250 mm)	SC-310	79.38 in (2016 mm)	19.53 in (496 mm)	39.06 in (992 mm)
1252AN3112	12 in (300 mm)	SC-310	80.64 in (2048 mm)	20.16 in (512 mm)	40.32 in (1024 mm)

DATE: 12.02.04
 APP'D BY: AWM
 DATE: 12.02.04
 DWG. SIZE: A
 SCALE: 1:100
 SHEET: 1 OF 1
 DWG. NO.: 7001-110-053 REV. D

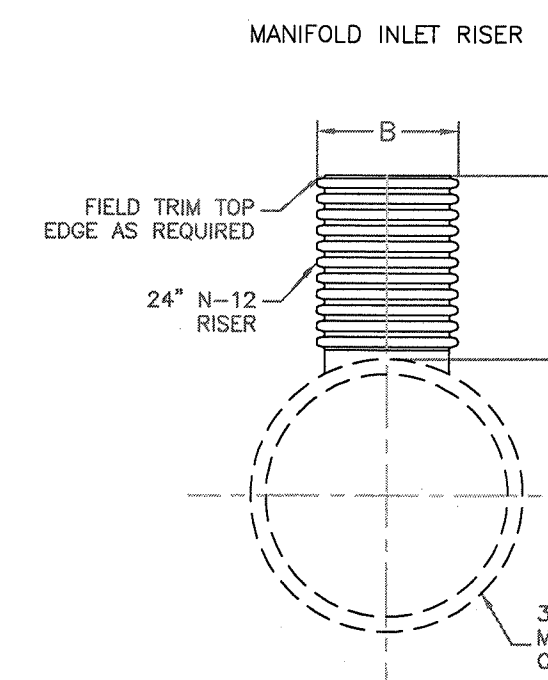


310 5700A AVE.
 BURLINGAME, CA 94010
 PH: (415) 433-2443
 FAX: (415) 433-2442
 WWW.ADS-DRAINAGE.COM

MANIFOLD COMPONENTS

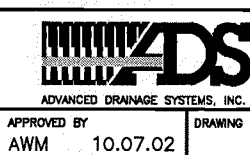


PART #	CLEANOUT DIAMETER	A	B
0402AN	4"	36"	4.50"
0602AN	6"	36"	6.88"
0802AN	8"	36"	8.88"
1002AN	10"	36"	11.40"
1202AN	12"	36"	14.00"



PART #	RISER DIAMETER	A	B
0403AN	4"	36"	8.40"
0603AN	6"	36"	11.40"
0803AN	8"	36"	14.40"
1003AN	10"	36"	17.40"
1203AN	12"	36"	20.40"

DATE: 10.07.02
 APP'D BY: AWM
 DATE: 10.07.02
 DWG. SIZE: A
 SCALE: 1:100
 SHEET: 1 OF 1
 DWG. NO.: 4025

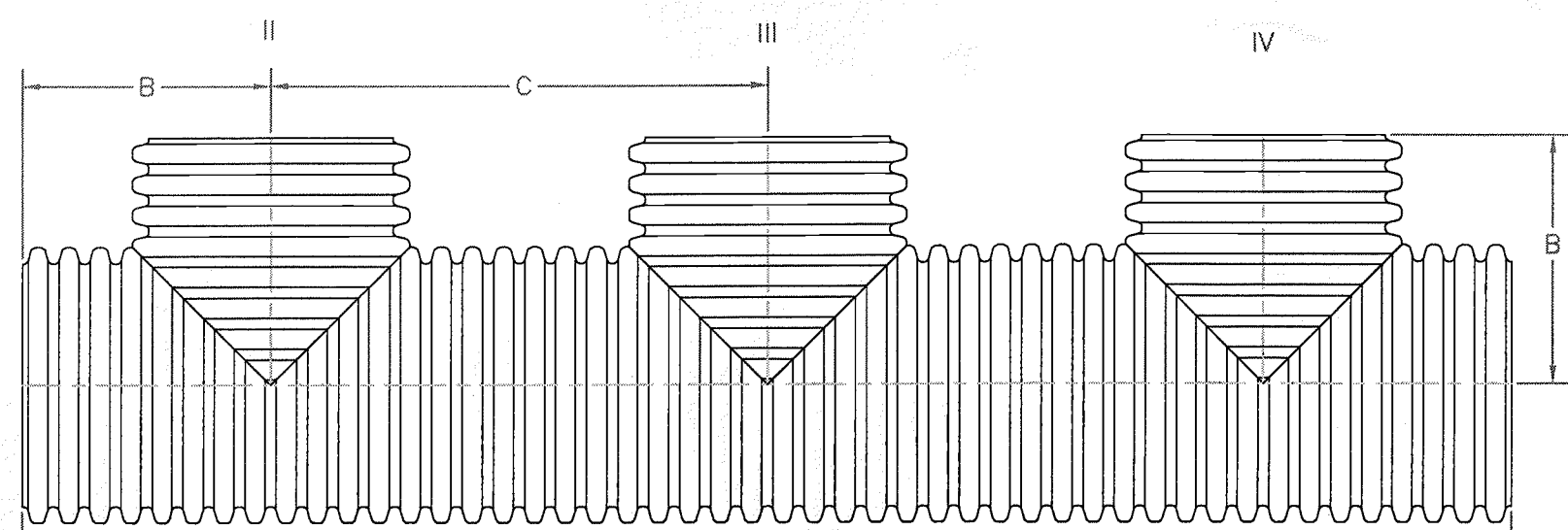


310 5700A AVE.
 BURLINGAME, CA 94010
 PH: (415) 433-2443
 FAX: (415) 433-2442
 WWW.ADS-DRAINAGE.COM

FABRICATED TRIPLE MANIFOLD TEES 24"-36" DIAMETER

PART #	PIPE SIZE	CHAMBER SIZE	A	B	C
0653AN7406	6 in (150 mm)	SC-740	170.94 in (4342 mm)	57.00 in (1448 mm)	56.98 in (1447 mm)
0853AN7408	8 in (200 mm)	SC-740	169.92 in (4316 mm)	56.32 in (1433 mm)	56.64 in (1439 mm)
1053AN7410	10 in (250 mm)	SC-740	170.10 in (4321 mm)	56.35 in (1439 mm)	56.70 in (1440 mm)
1253AN7412	12 in (300 mm)	SC-740	172.80 in (4398 mm)	57.60 in (1463 mm)	57.60 in (1463 mm)
1553AN7415	15 in (375 mm)	SC-740	170.94 in (4342 mm)	56.98 in (1447 mm)	56.98 in (1447 mm)
1853AN7418	18 in (450 mm)	SC-740	171.52 in (4357 mm)	57.15 in (1452 mm)	57.15 in (1452 mm)
2453AN7424	24 in (600 mm)	SC-740	170.10 in (4321 mm)	56.70 in (1440 mm)	56.70 in (1440 mm)

PART #	PIPE SIZE	CHAMBER SIZE	A	B	C
0653AN3106	6 in (150 mm)	SC-310	117.81 in (2992 mm)	19.64 in (499 mm)	39.27 in (997 mm)
0853AN3108	8 in (200 mm)	SC-310	118.08 in (2999 mm)	19.68 in (500 mm)	39.36 in (1000 mm)
1053AN3110	10 in (250 mm)	SC-310	117.18 in (2976 mm)	19.53 in (496 mm)	39.06 in (992 mm)
1253AN3112	12 in (300 mm)	SC-310	120.96 in (3072 mm)	20.16 in (512 mm)	40.32 in (1024 mm)



P = PLAIN END ST = SILT TIGHT JOINT
 B = BELL END WT = WATER TIGHT JOINT
 S = SPIGOT END

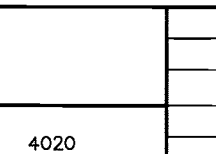
FABRICATED 90° MANIFOLD BENDS 12"-24" DIAMETER

PART #	PIPE SIZE	CHAMBER SIZE	A
0898AN74	8 in (200 mm)	SC-740	28.32 in (719 mm)
1098AN74	10 in (250 mm)	SC-740	28.35 in (720 mm)
1298AN74	12 in (300 mm)	SC-740	28.80 in (732 mm)
1598AN74	15 in (375 mm)	SC-740	28.49 in (724 mm)
1898AN74	18 in (450 mm)	SC-740	28.14 in (715 mm)
2498AN74	24 in (600 mm)	SC-740	28.35 in (720 mm)

PART #	PIPE SIZE	CHAMBER SIZE	A
0698AN31	6 in (150 mm)	SC-310	19.64 in (499 mm)
0898AN31	8 in (200 mm)	SC-310	19.68 in (500 mm)
1098AN31	10 in (250 mm)	SC-310	19.53 in (496 mm)
1298AN31	12 in (300 mm)	SC-310	20.16 in (512 mm)

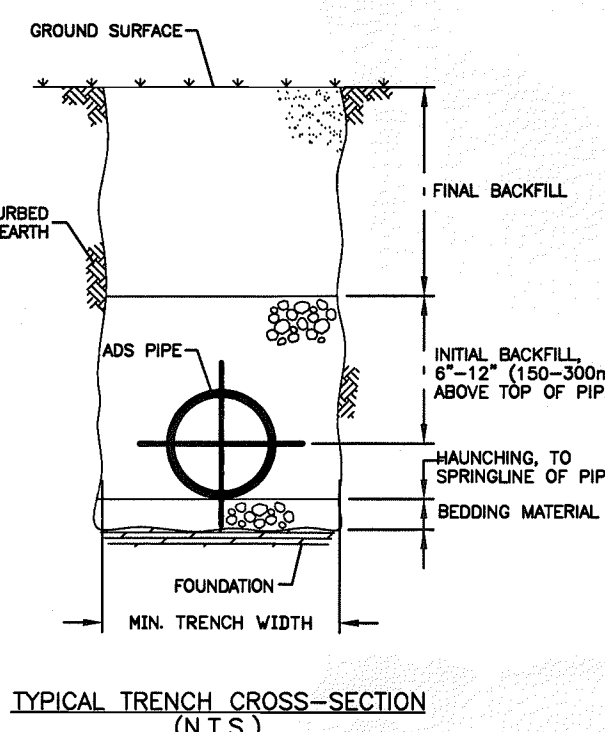
P = PLAIN END ST = SILT TIGHT JOINT
 B = BELL END WT = WATER TIGHT JOINT
 S = SPIGOT END

DATE: 07.24.02
 APP'D BY: AWM
 DATE: 10.05.02
 DWG. SIZE: A
 SCALE: 1:100
 SHEET: 1 OF 1
 DWG. NO.: 4020



310 5700A AVE.
 BURLINGAME, CA 94010
 PH: (415) 433-2443
 FAX: (415) 433-2442
 WWW.ADS-DRAINAGE.COM

TRENCH INSTALLATION DETAIL



- FOUNDATION: WHERE THE TRENCH BOTTOM IS UNDESIRABLE, THE CONTRACTOR SHALL EXCAVATE TO A DEPTH REQUIRED BY THE ENGINEER AND REPLACE WITH A FOUNDATION OF CLASS I OR II MATERIAL AS DEFINED IN ASTM D2321. STANDARD PRACTICE FOR FOUNDATION OF THERMOPLASTIC PIPE FOR SEWERS AND OTHER GRAVITY-FLOW APPLICATIONS IS TO USE AN ALTERNATIVE AND AT THE DISCRETION OF THE ENGINEER, THE TRENCH BOTTOM MAY BE STABILIZED USING A WOVEN GEOTEXTILE FABRIC.
 - BEDDING: SUITABLE MATERIAL SHALL BE CLASS I, OR II AND INSTALLED AS REQUIRED IN ASTM D2321, LATEST EDITION. UNLESS OTHERWISE SPECIFIED BY THE ENGINEER, MINIMUM BEDDING THICKNESS SHALL BE 4" (100mm) FOR 4"-24" (100-300mm) PE (PEPP), 6" (150mm) FOR 30" (760-1500mm) PEPP.
 - HAUNCHING AND INITIAL BACKFILL: SUITABLE MATERIAL SHALL BE CLASS I, OR II AND INSTALLED AS REQUIRED IN ASTM D2321, LATEST EDITION. UNLESS OTHERWISE SPECIFIED BY THE ENGINEER, MINIMUM TRENCH WIDTHS SHALL BE AS FOLLOWS:
- | NOMINAL SIZE (IN.) | MIN. RECOMMENDED TRENCH WIDTH (IN.) |
|--------------------|-------------------------------------|
| 4 (100) | 21 (530) |
| 6 (150) | 23 (580) |
| 8 (200) | 25 (630) |
| 10 (250) | 27 (680) |
| 12 (300) | 31 (780) |
| 14 (350) | 34 (860) |
| 18 (450) | 39 (990) |
| 24 (600) | 44 (1120) |
| 30 (750) | 56 (1400) |
| 36 (900) | 66 (1660) |
| 42 (1050) | 83 (2110) |
| 48 (1200) | 89 (2260) |
| 60 (1500) | 102 (2590) |

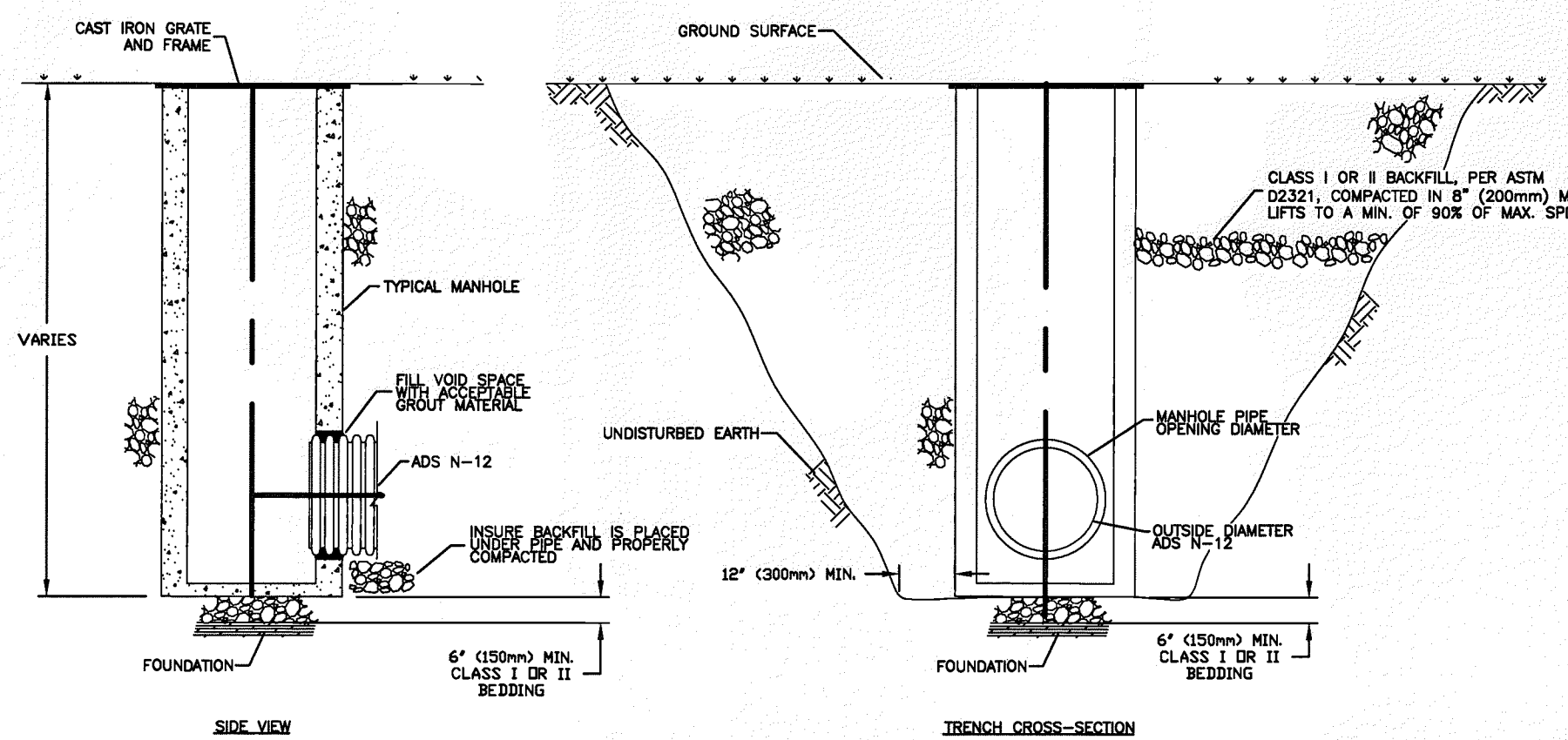
NOTE TO THE ENGINEER: WHEN THIS DETAIL IS TO BE INCORPORATED INTO CONTRACT DOCUMENTS, PLEASE REFERENCE SECTION X-2, "RECOMMENDATIONS FOR INCORPORATION INTO CONTRACT DOCUMENTS" OF ASTM SPECIFICATION D2321, "STANDARD PRACTICE FOR UNDERGROUND INSTALLATION OF THERMOPLASTIC PIPE FOR SEWERS AND OTHER GRAVITY-FLOW APPLICATIONS," SO THAT APPROPRIATE MODIFICATIONS CAN BE MADE TO ACCOMMODATE SITE SPECIFIC NEEDS.

DATE: 5-7-99
 APP'D BY: X.M.J.
 DATE: 5-7-99
 DWG. SIZE: A
 SCALE: 1:100
 SHEET: 1 OF 1
 DWG. NO.: STD-101



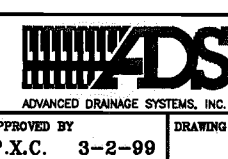
310 5700A AVE.
 BURLINGAME, CA 94010
 PH: (415) 433-2443
 FAX: (415) 433-2442
 WWW.ADS-DRAINAGE.COM

GRouted MANHOLE CONNECTION FOR NON-WATERTIGHT APPLICATIONS ONLY

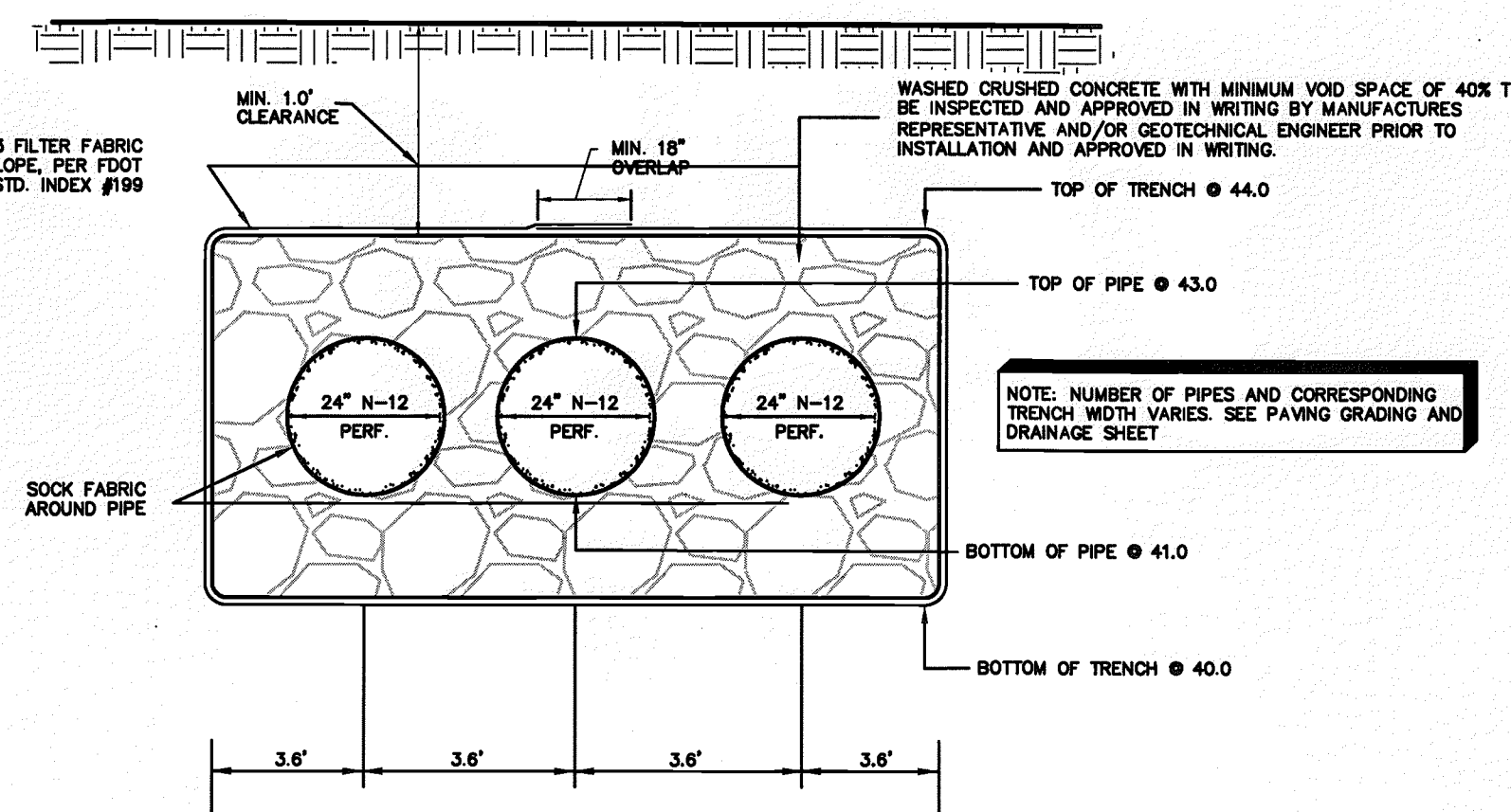


FILL VOID SPACE BETWEEN ADS PIPE AND MANHOLE OPENING WITH A NON-SHRINK GROUT MATERIAL.

DATE: 3-2-99
 APP'D BY: X.M.J.
 DATE: 3-2-99
 DWG. SIZE: A
 SCALE: 1:100
 SHEET: 1 OF 1
 DWG. NO.: STD-201



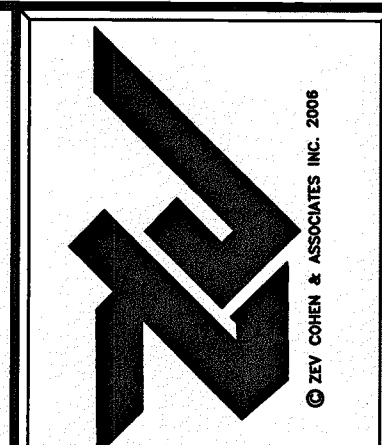
310 5700A AVE.
 BURLINGAME, CA 94010
 PH: (415) 433-2443
 FAX: (415) 433-2442
 WWW.ADS-DRAINAGE.COM



TYP. EXFILTRATION TRENCH DETAIL

NOTE: PRIOR TO BEGINNING CONSTRUCTION OF THE EXFILTRATION SYSTEM, THE CONTRACTOR SHALL CONTACT AND COORDINATE WITH A TESTING FIRM TO WITNESS THE INSTALLATION OF THE EXFILTRATION SYSTEM. THE MATERIAL TESTING FIRM SHALL PROVIDE THE PROJECT ENGINEER WITH A LETTER CERTIFYING THE EXFILTRATION SYSTEM WAS INSTALLED PER THE APPROVED SITE PLANS AND ADS SPECIFICATIONS. IN ADDITION, THE CONTRACTOR SHALL BE RESPONSIBLE TO INSURE THE ADS MANUFACTURER'S REPRESENTATIVE IS CONTACTED AND MAKES SITE VISITS TO WITNESS THE INSTALLATION OF THE EXFILTRATION SYSTEM AND CONFIRM IT IS IN ACCORDANCE WITH THE PLANS AND THEIR SPECIFICATIONS.

TRENCH INSTALLATION DETAIL TYPICAL TRENCH CROSS-SECTION (N.T.S.)



55 SECON STREET, SUITE 101, PALM BEACH, FL 33476
 (561) 877-5468 FAX (561) 877-5885
 ST. AUGUSTINE
 4478 U.S. 1, SUITE 601, ST. AUGUSTINE, FL 32086
 (904) 797-1610 FAX (904) 797-4159
 AMELIA ISLAND
 402 CENTRE STREET, SUITE 101, AMELIA ISLAND, FL 32034
 (904) 481-5438 FAX (904) 261-7679

WALGREENS AT DELTONA FINAL SITE PLAN CONSTRUCTION DETAILS

ZEV COHEN & ASSOCIATES, INC.
 CIVIL ENGINEERS • LANDSCAPE ARCHITECTS
 PLANNERS • TRANSPORTATION • ENVIRONMENTAL
 WWW.ZEVCOHEN.COM
 PROJECT NO.: 05138
 DRAFTED BY: SSF
 CHECKED BY: MDD
 ISSUE DATE: 01-25-08
 DRAWING FILE: 05138010.DWG
 DESIGNED BY: JJ

FILE LOCATION
 NOT VALID WITHOUT EMBOSSED SEAL
 SCALE: 1"=30'
 SHEET C11 OF 13

115187-1

RECEIVED IN PALATKA
 FEB 14 2008
 SURWMD - PDS