



Deltona Quarterly Report



TEAMVOLUSIA
GREATER DAYTONA REGION
ECONOMIC DEVELOPMENT CORPORATION



March 25, 2021

Who We Are

Leveraging Resources



- Serves as the official P3 (Public/Private Partnership) EDO for Volusia County focused on business recruitment
- Incorporated in 2010 as a 501c6
- Represents Volusia County and 16 Cities



The Local Team

13 Cities

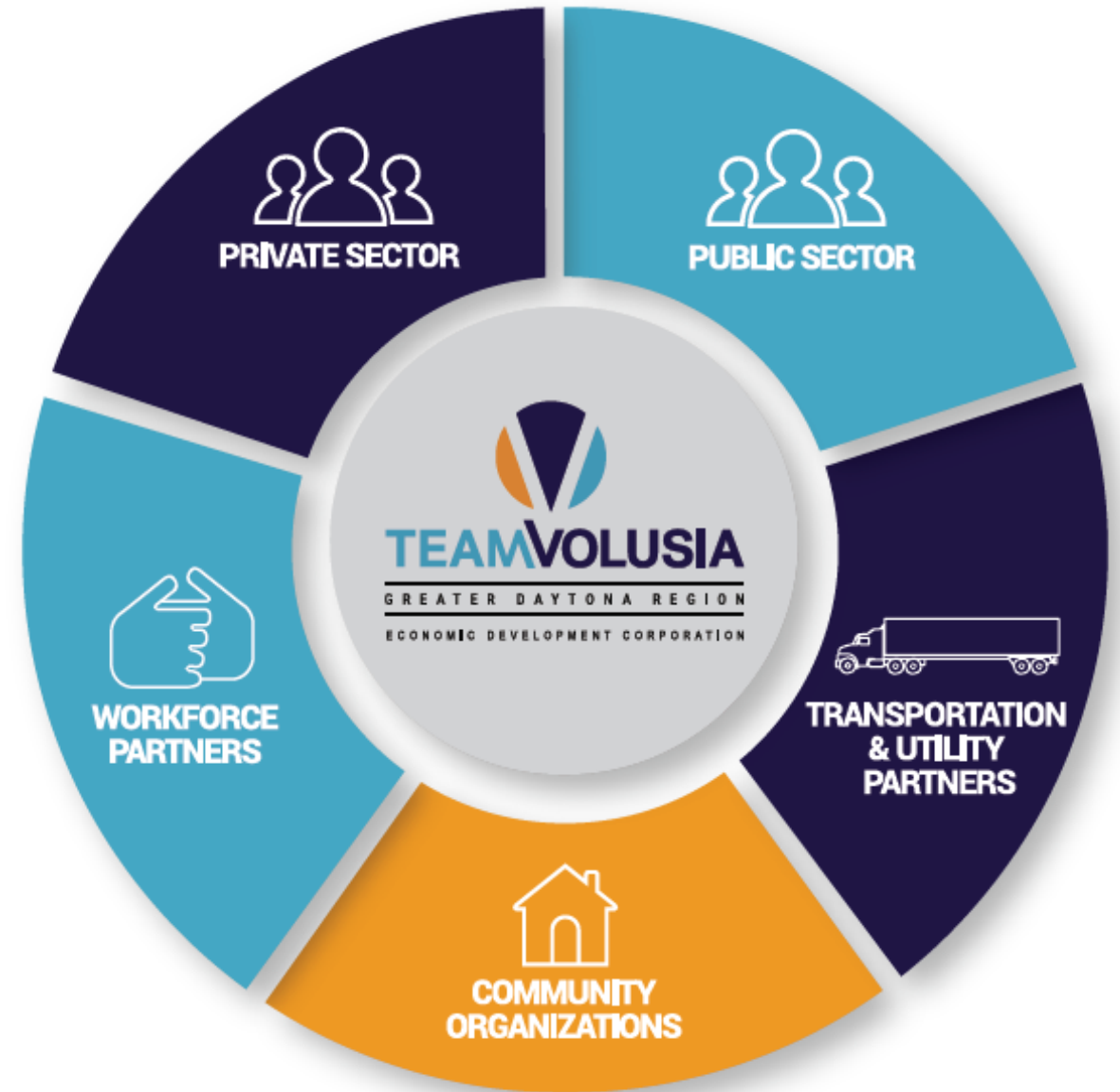
6 Colleges/Universities

Multiple Utilities

Non-Profit/Government Partners

80 Private Sector Partners

Approx. 100 Investors



Staff



Keith A. Norden, CEcD
President and CEO



Debbie Robbins
Executive Assistant
Office Coordinator



Chris Wimsatt, CEcD, DFCP
Vice President
Business Development



Heather Shubirg
Executive
Vice President



Jen Boggs
Bookkeeper

**RESILIENT GROWTH
A YEAR LIKE NO OTHER**



TEAMVOLUSIA
GREATER DAYTONA REGION
ECONOMIC DEVELOPMENT CORPORATION

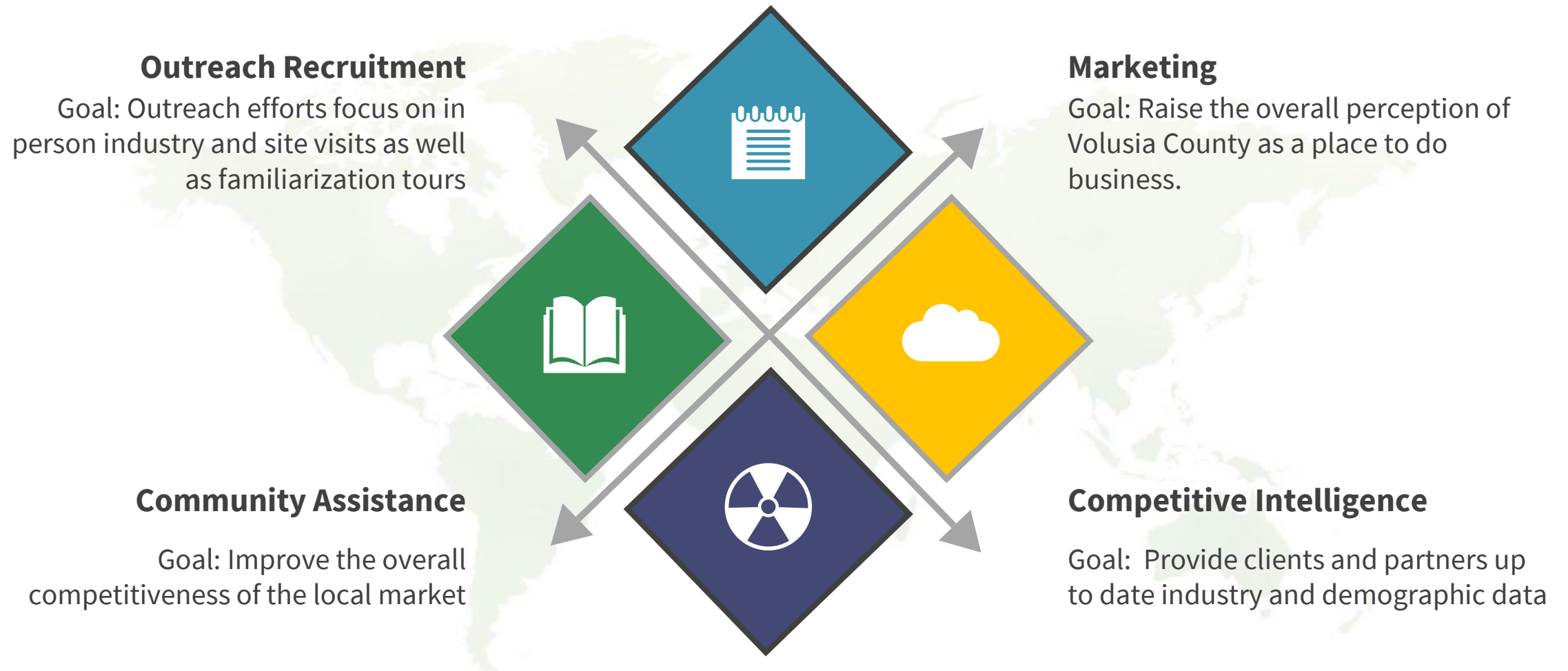
**2020
ANNUAL
REPORT**



TEAMVOLUSIA
GREATER DAYTONA REGION
ECONOMIC DEVELOPMENT CORPORATION

2020 Activities

2020 Activity Focus

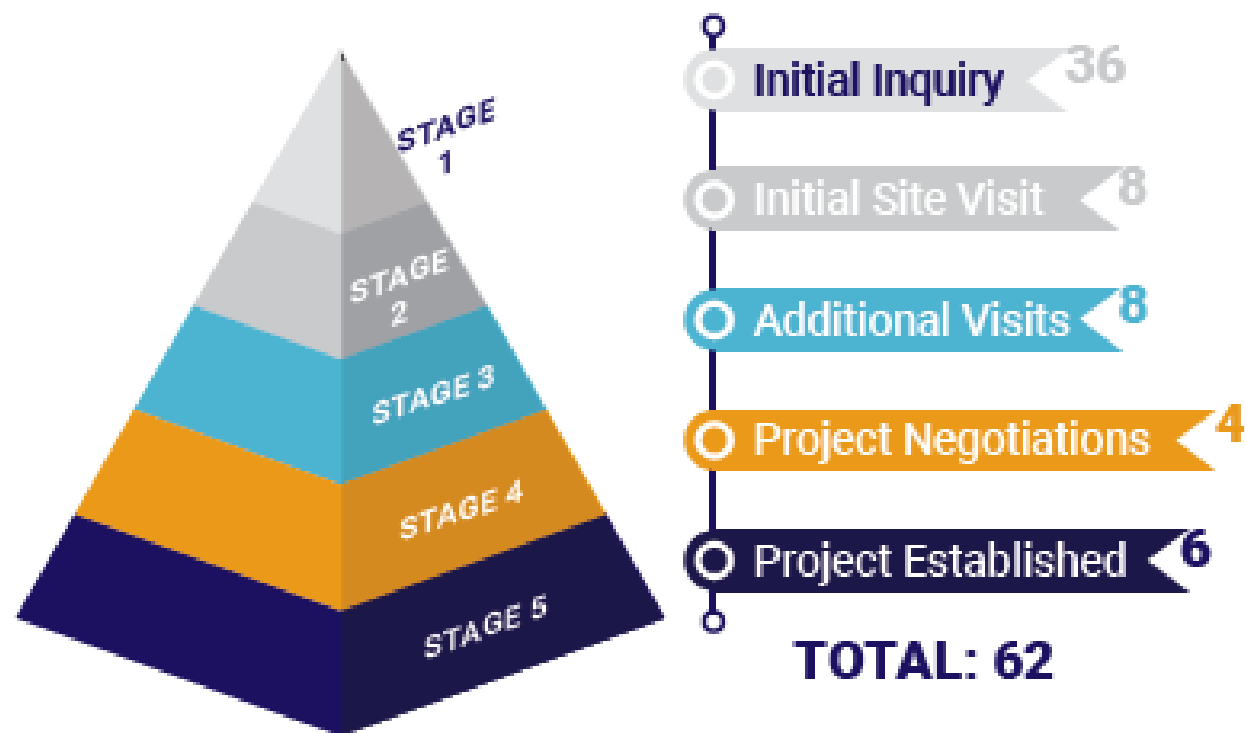


2020 Business Development Metrics

Business Development Operational Metrics

Operational Metrics	Goal	2020 Actual
Outreach	26	15
Proposals	12	50
Site Visits	15	20
Marketing Packages	50	75
Preset Meetings	36	90
Film Permit Applications	N/A	2

2020 Active Projects



2020 Announcements

BAJIO



Total = 385 Jobs, \$154m Capx

Measuring Success

TOTAL ECONOMIC IMPACT

\$209,438,146

► Annual Metrics

**Capital Investment
\$154,000,000**

**Announced Jobs
385**

**Payroll
\$18,625,000**



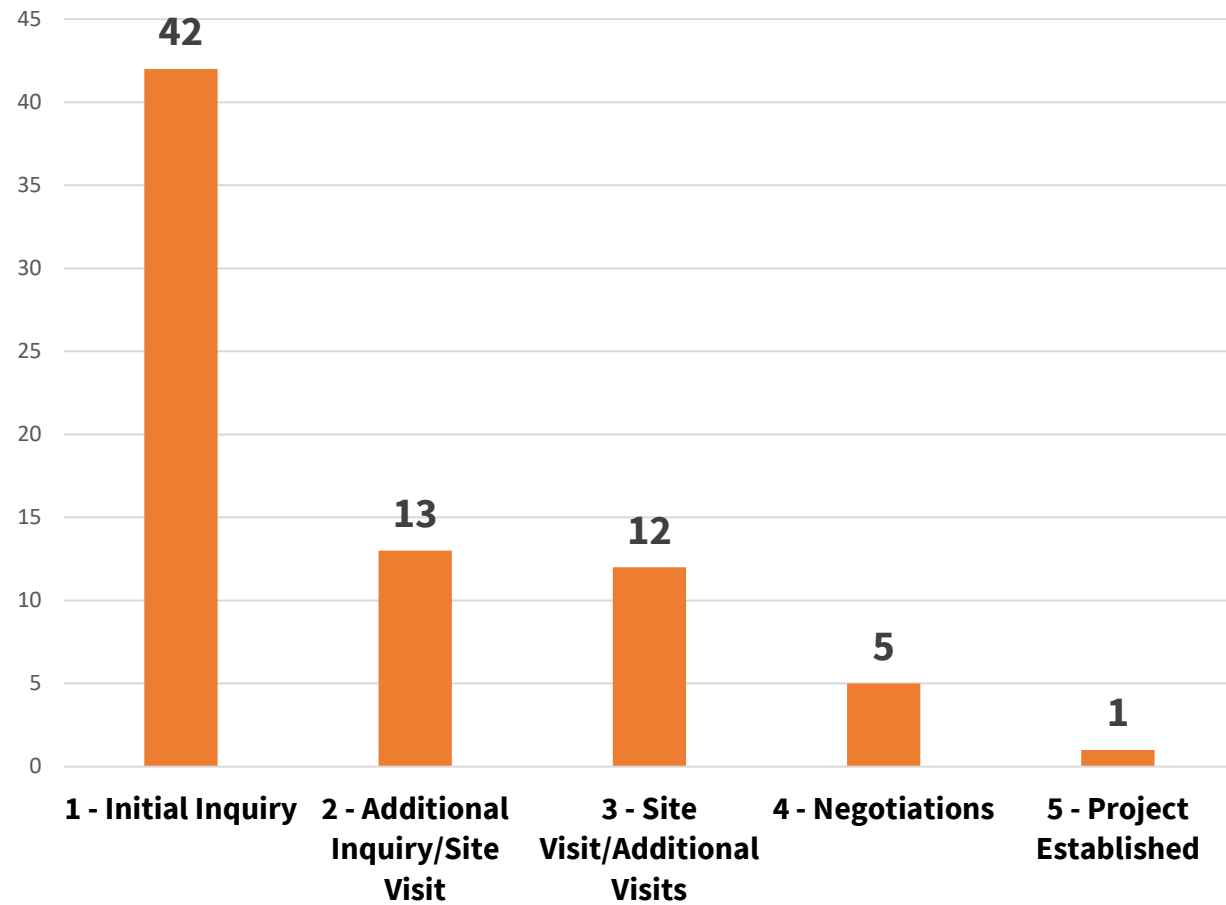


TEAMVOLUSIA
GREATER DAYTONA REGION
ECONOMIC DEVELOPMENT CORPORATION

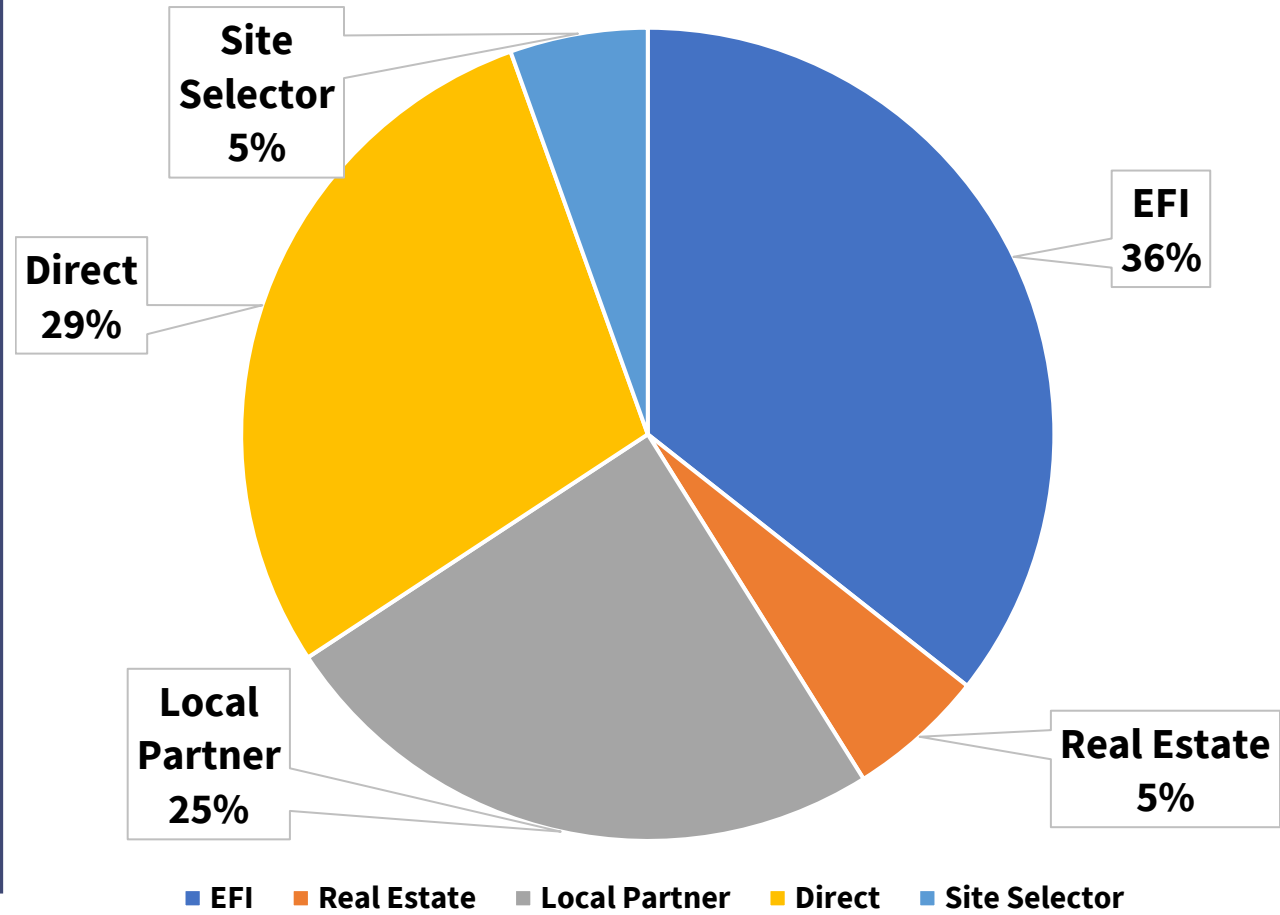
2021 Activities

2021 Business Development Project Activity

Projects by Stage

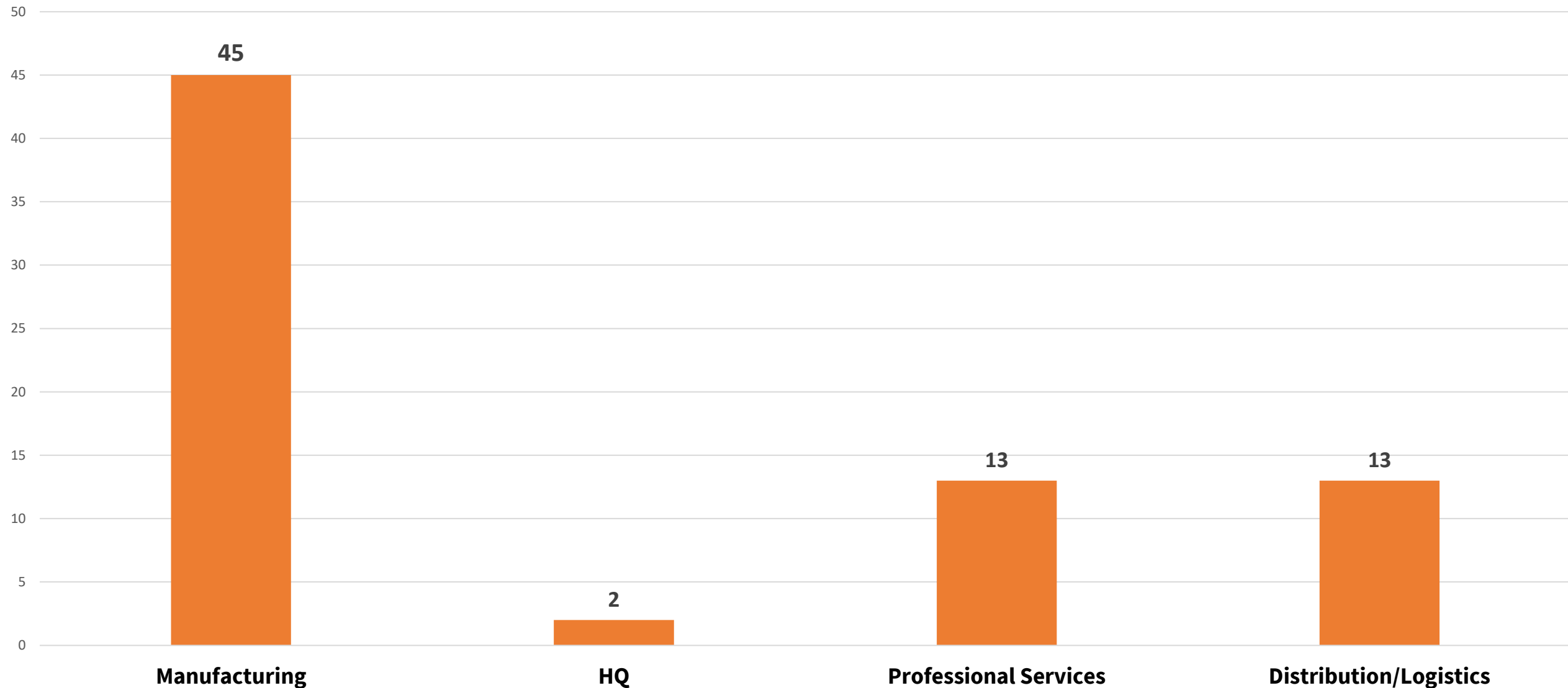


Projects by Source



2021 Business Development Project Activity

Projects by Type



2021 Project Announcements



Company: ALCOM

Description: Trailer Manufacturer

Location: Volusia County/DeLand

Project Metrics

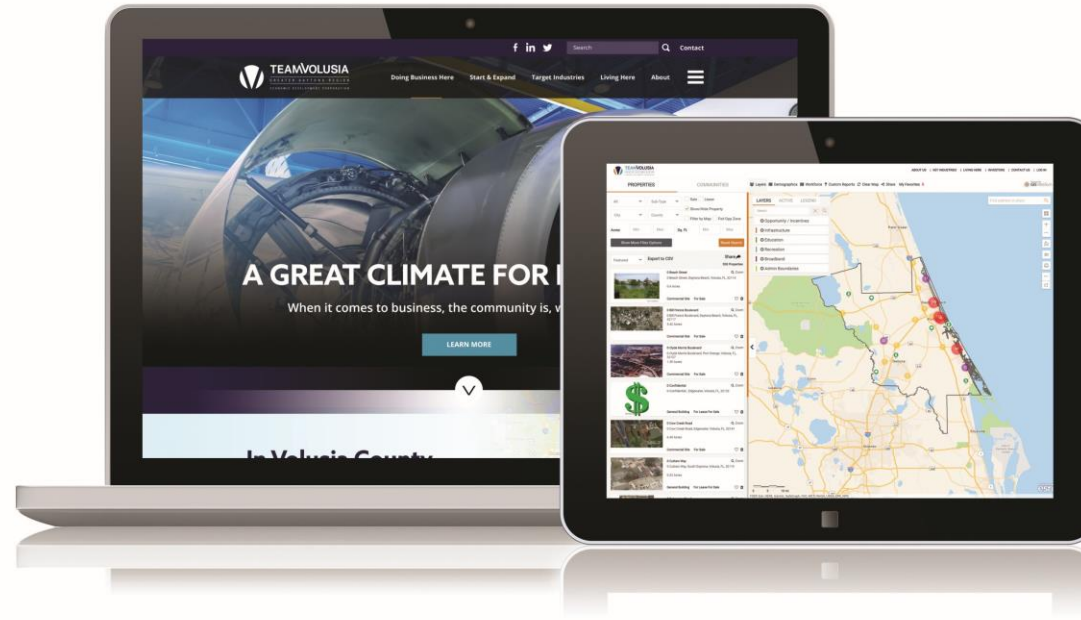
Jobs - 150

Capx - \$4m

Annual Payroll - \$5.3m

Marketing Update

TeamVolusiaEDC.com update
95% complete



VolusiaSites.com update
95% complete




TEAMVOLUSIA
GREATER DAYTONA REGION
ECONOMIC DEVELOPMENT CORPORATION

Marketing Update

Team Volusia Economic Development Corporation
485 followers
1mo • 🌐

SEAMAX Aircraft, a Brazilian Aircraft Manufacturer, announces this month the launch of the company assembly operations in the USA. Team Volusia Economic Development Corporation was instrumental in assisting SeaMax with its ...see more



39 • 3 Comments

Thanks for posting... I think this is... Do you think... Thanks f >

👍 Like 💬 Comment

Organic impressions: 1,536 Impressions Show stats ▾

Team Volusia EDC
453 Tweets

Team Volusia EDC @TeamVolusiaEDC · Aug 31

It has been less than a year since the news that a more than one million square foot Amazon fulfillment center would locate in the City of Deltona in west Volusia County. Currently, Amazon is hiring for its fulfillment center with over 500 jobs. Read more: bit.ly/2YSzPAz




1 2



Team Volusia Economic Development Corporation
December 5 at 2:30 PM • 🌐

SpaceX is scheduled to launch a Falcon 9 Block 5 rocket tomorrow as part of the Dragon CRS-2 SpX-21 mission. This resupply mission takes off at 11:17 AM EST! Learn more about how you can view the launch here: <https://www.spacelaunchschedule.com/launch-details.php...>



SPACELAUNCHSCHEDULE.COM

SpaceX launch of a Falcon 9 Block 5 | Dragon CRS-2 SpX-21 [Learn More](#)

15 3 Shares

👍 Like 💬 Comment ➦ Share

[See All](#)



TEAMVOLUSIA
GREATER DAYTONA REGION
ECONOMIC DEVELOPMENT CORPORATION

Talent Attraction - Livability 2020-2021

GREATER DAYTONA REGION VOLUSIA COUNTY
2020
LIVABILITY.COM/greater-daytona-region

AFFORDABILITY, OPPORTUNITY MAKE FOR A WINNING COMBO

Beaches
yes, but there's more to the outdoors

Magnetic ATTRACTION
The region adds new residents - and jobs

Livability: Find Your Best Place To Live

Port Orange
POPULATION ► 64,252
Once a city known for its citrus, farming, lumber, oystering and ranching, Port Orange has a variety of upscale housing options and expanding subdivisions. A highly regarded education network includes the 600+ student Palmer College of Chiropractic. For 34 consecutive years, the city has received the 'Tree City USA' award from the National Arbor Day Foundation. The River District on Port Orange's east side includes Riverwalk Park, which features a playground, splash park and picnic facilities. The north side of the park features a kayak/canoe launch, a trail and an over-water boardwalk and trailhead.

Ormond Beach
POPULATION ► 43,475
With its trademark white sand, Ormond Beach is a popular destination along the Atlantic Ocean in Volusia County. Bordered by the Tomoka River to the west and the Atlantic to the east, Ormond Beach offers a wealth of water-related recreation opportunities. Many visitors camp at Tomoka State Park. Other popular attractions include Ormond Beach Memorial Art Museum & Gardens and Ormond Beach Performing Arts Center as well as the historic downtown district along Granada Boulevard that offers unique local retail and restaurants.

Lake Helen
POPULATION ► 2,814
Lake Helen is located off I-4. Nicknamed the "Gem of Florida" for its tree-lined streets, historic architecture and small-town character. The city's namesake Lake Helen spans 26 acres and is great for swimming, sailing, fishing and boating (jet boats, rowboats and boats with trolling motors only). Lake Helen can be accessed at Royal Park, which includes a pavilion with picnic amenities, a small bandstand and a boat ramp. The popular 20-acre Lake Moxy includes a partially covered dock and boat launch.

South Daytona
POPULATION ► 13,054
South Daytona is an upscale residential city bordering the Halifax River and only minutes from Atlantic Ocean beaches. Residents have access to numerous parks, excellent schools, many independent restaurants and well-landscaped neighborhoods. Abundant shopping options throughout the community include Sunshrine Park Mall, Riverfront Veterans Memorial Park offers a newly renovated public boat launch ramp, state-of-the-art kayak launch and fishing pier.

Holly Hill
POPULATION ► 12,316
On the west bank of the Halifax River, Holly Hill is the corporate address for one of the state's largest health insurers, Florida Health Care Plans, which has made its headquarters there for more than 30 years. The 4.2 square-mile community boasts ample holly hedges, magnolias, palms and majestic oak trees as well as 15 parks.

Orange City
POPULATION ► 11,804
Named for its thousands of acres of orange groves, Orange City is a growing community and has welcomed an average of 100 new business license holders annually over the past five years. Conveniently situated at I-4 and State Road 472, the community was recently named a Monarch City for its efforts to preserve and grow the region's dwindling monarch butterfly population. Orange City has seven sites on the National Register of Historic Places, including Orange City Town Hall.

New Smyrna Beach
POPULATION ► 27,229
A destination for outdoor recreation, New Smyrna Beach offers water sports of all kinds, including boating, fishing, sailing, scuba diving, surfing and swimming. Students can attend classes at Daytona State College, New Smyrna Beach Edgewater Campus. New Smyrna Beach has long been recognized as a top community for the arts thanks to venues such as the Atlantic Center for the Arts, Harris House, Little Theatre and a popular gallery called Arts on Douglas, which promotes the work of Florida artists. The city's airport has three active runways (the longest is 5,000 feet) with an air traffic control tower.

Ponce Inlet
POPULATION ► 3,282
Located between the Halifax River and Atlantic Ocean, Ponce Inlet is visited by more than 80,000 people annually. The famed Ponce de Leon Inlet Lighthouse, the second-tallest lighthouse in the nation, lets visitors climb its steps to view the Florida coastline. Ponce Inlet also has several marinas and the Marine Science Center, with exhibits that include a hand-picked whale skull, freshwater turtles and stingray touch pool.

Oak Hill
POPULATION ► 2,183
Once known only for citrus growing, Oak Hill today has an increasingly diverse economy. The city is along Florida's 156-mile River of Lakes Heritage Corridor and features recreational fishing opportunities as well as several clam and oyster farms. Oak Hill's Burns Science and Technology Charter School features a STEM-based, K-8 curriculum that attracts students from as far away as Orange City and Ormond Beach.

81°
Average high summer temperature

47
miles of beaches

10 GREATER DAYTONA
LIVABILITY.COM/GREATER-DAYTONA-REGION 11

<https://livability.com/greater-daytona-region>

Strategic Plan Special Projects



Amazon Deltona

Special Projects - Community Competitiveness

re:Vision
A COMMUNITY PERFORMANCE PROGRAM

VISIONFIRST ADVISORS
STRATEGY | ACTION | RESULTS
A SUBSIDIARY OF BUTLER SNOW LLP



**COMMUNITY
GATEWAYS**

—
physically
+ virtually



**PRODUCT
REVIEW**

—
comprehensive:
sites, buildings + talent



**COMMUNITY
MARKETING
& POSITIONING**

—
statistics + marketing



**DEAL
STRUCTURING**

—
optimizing
opportunities



**DELTA
TEAM**

—
a seat
at the table



**ORGANIZATIONAL
STRUCTURE**

—
maximizing
efficiency



RESOURCES

—
capacity
to compete



LEADERSHIP

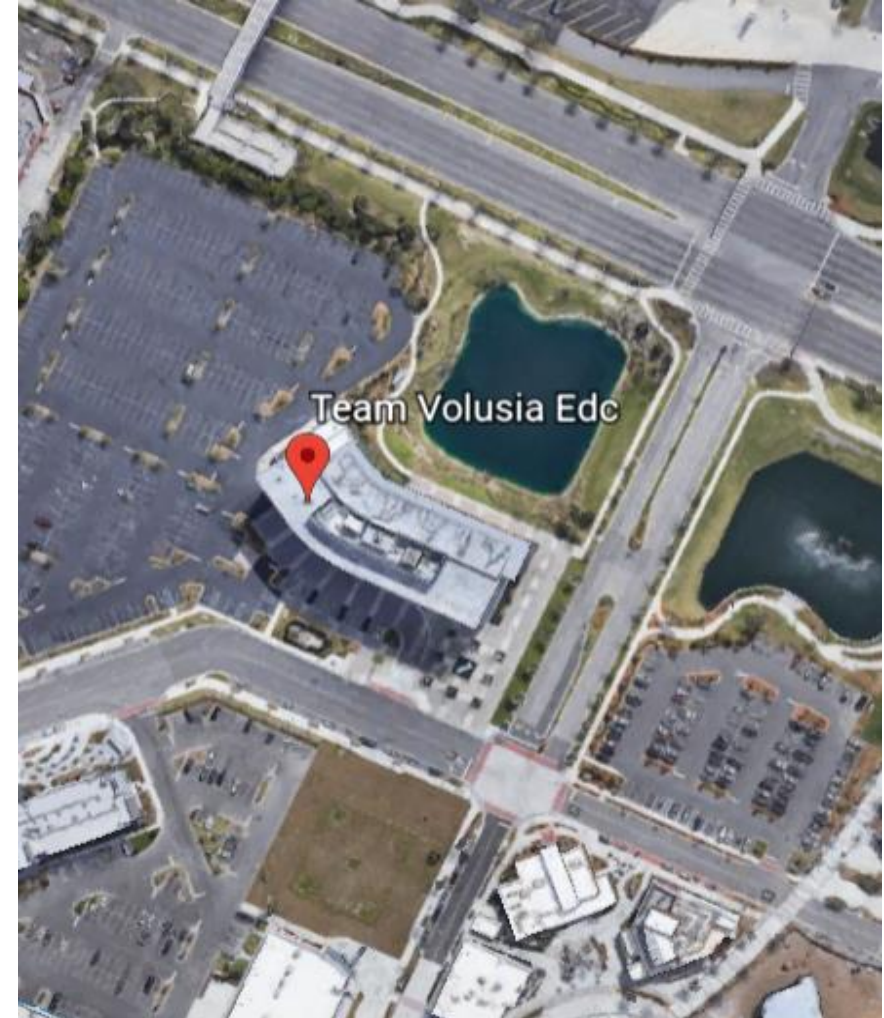
—
expectations
+ responsibilities

**Completed:
January 2021**

Thank You + Questions

Connect With Us!

Team Volusia EDC, through tremendous commitment and partnership, works on strategic economic development activities and business recruitment initiatives to Volusia County, Florida. The organization is a valuable part of the economic development delivery system and works in partnership with state and county agencies, municipalities, chambers and other resource partners to achieve county-wide economic development goals for Volusia County. The EDC's program and services are partially funded through contracts with Volusia County and many of the municipalities located within the county. Additional funds are raised from private sector companies and organizations. Today, the organizations continues to grow and help strengthen the economic prosperity for the region.



Team Volusia EDC
One Daytona Blvd
Daytona Beach, FL 32114



386 265-6332 (Office)
386-341-6527 (Cell)



www.tvedc.com
cwimsatt@tvedc.com