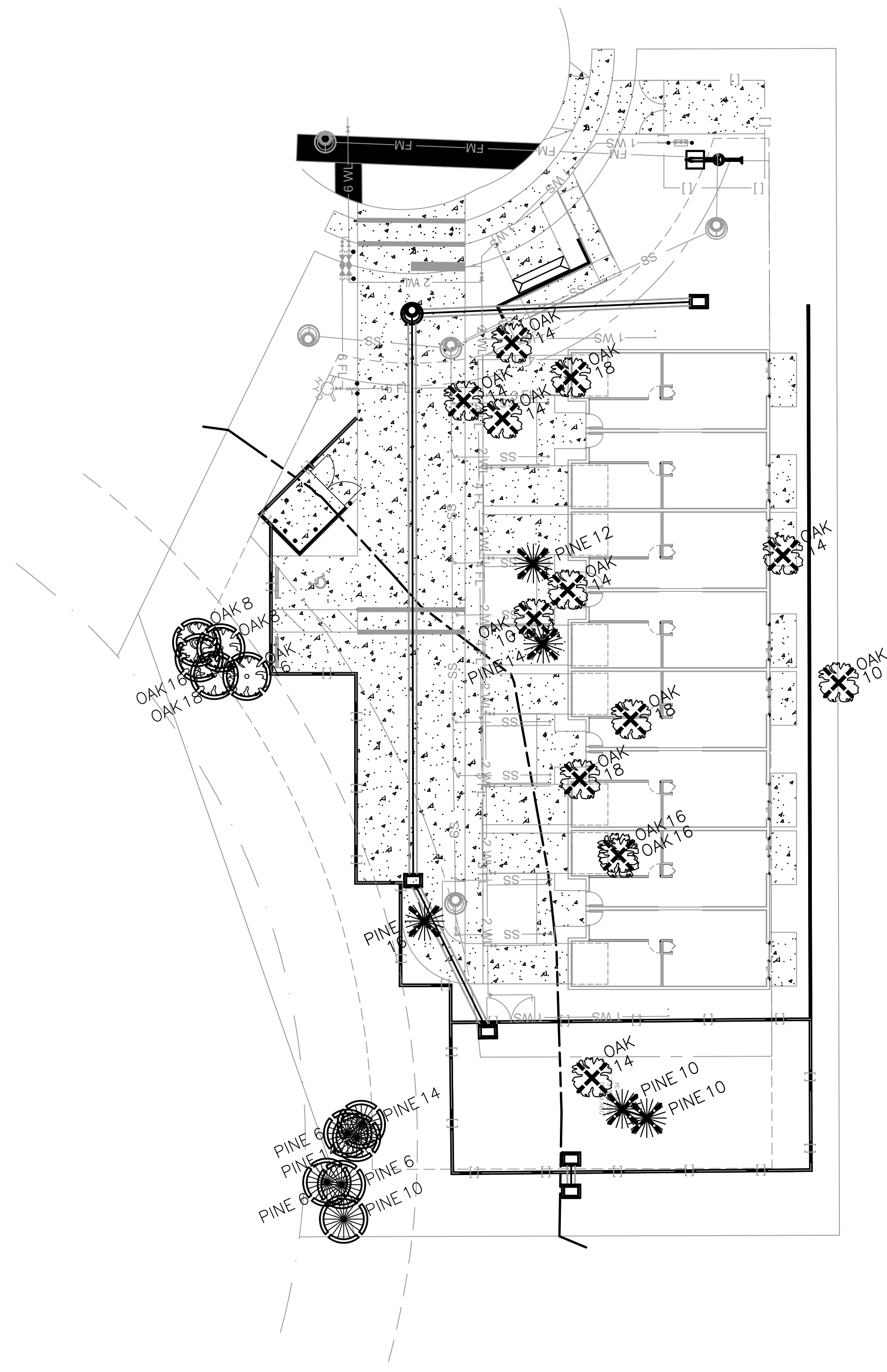
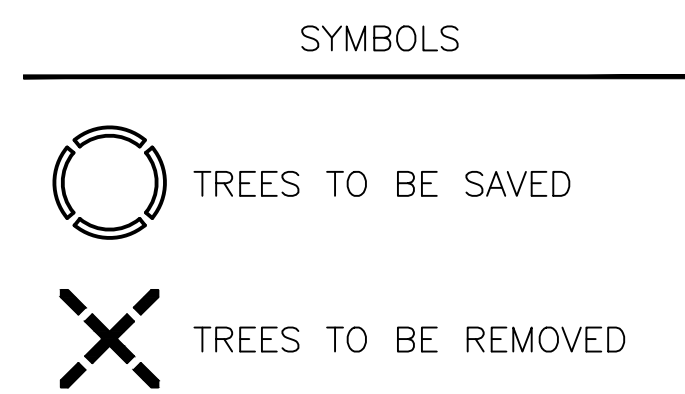


IF LESS THAN 24"x36" SHEET HAS BEEN REDUCED, ADJUST THE SCALE TO THE DRAWING ACCORDINGLY.

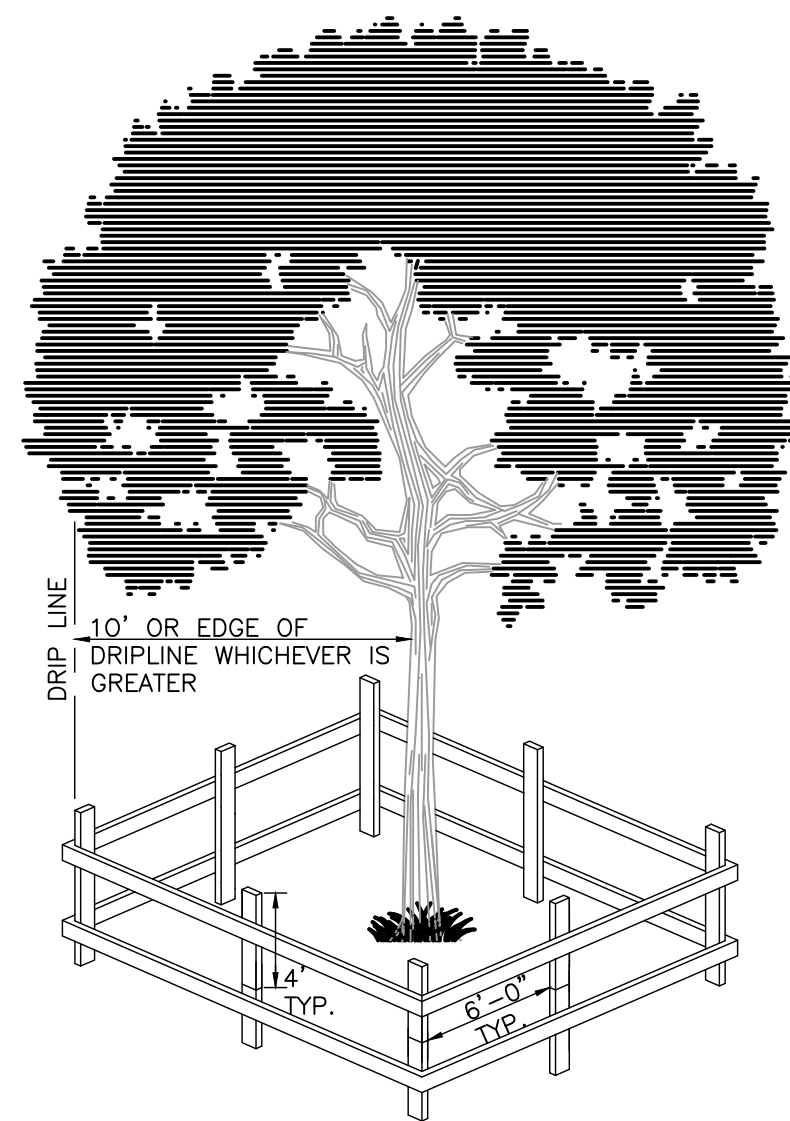


Existing trees to be Saved			
TYPE	Count	SIZE	INCHES
OAK	1	18	18.0000
OAK	2	16	32.0000
OAK	2	8	16.0000
PINE	1	10	10.0000
PINE	3	6	18.0000
PINE	2	14	28.0000
Total			122.0000

Existing trees to be Removed			
TYPE	Count	SIZE	INCHES
OAK	2	10	20.0000
OAK	2	16	32.0000
OAK	6	14	84.0000
OAK	3	18	54.0000
PINE	1	16	16.0000
PINE	2	10	20.0000
PINE	1	12	12.0000
PINE	1	14	14.0000
Total			252.0000

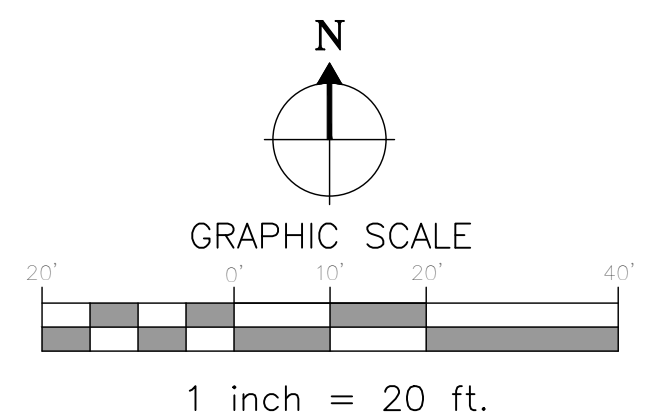


EXISTING TREE TOTALS	
TOTAL TREES REMOVED	= 18
TOTAL CALIPER REMOVED	= 252"
TOTAL TREES PRESERVED	= 11
TOTAL CALIPER PRESERVED	= 122"
REQUIRED REPLACEMENT	= 25.2"



1 TYPICAL TREE PROTECTION DETAIL
TM100 SCALE= N.T.S.

NOTE:
Posts shall be used as protective barriers to the roots and trunk of every tree on the parcel being developed. The posts shall be placed at points not closer than three-quarters (3/4) the radius of the drip-line of the protected tree, unless the structure has been permitted by Planning, Zoning & Development Department to be erected within the drip-line of a tree with a wide canopy. Each section of the barrier shall be clearly visible (flagged with brightly colored plastic tape or other markers). No attachments or wires other than those with protective or non-damaging nature shall be attached to any tree.



LANDSCAPE ARCHITECT:

Robert R. Buchanan LA0000932

Landscape Dynamics Construction Co., Inc. hereby reserves all copyright and other proprietary rights in these plans, views, and designs. These plans, views, and designs are not to be reproduced, altered, or copied in any form or manner whatsoever, nor are they to be assigned to any third party, without first obtaining the express written permission from Landscape Dynamics Construction Co., Inc.

48 HOURS BEFORE YOU DIG CALL SUNSHINE 1-800-475-8111 IT'S THE LAW IN FLORIDA FLORIDA LAW REQUIRES LANDSCAPE ARCHITECTS TO MARK FACILITIES NO LARGER THAN TWO (2) INCHES FROM THE SURFACE.

CONTRACTOR MUST REVIEW ALL GENERAL LANDSCAPE NOTES PRIOR TO BIDDING AND CONSTRUCTION

Hovel Construction, LLC
Orlando, FL 32819

LANDSCAPE
Landscape
LANDSCAPE ARCHITECTS AND PLANNERS, LLC

P.O. BOX 2852 - Winter Park, Florida 32790-2852 - Phone 407-579-8111 - Email randy@landscapeplanning.com

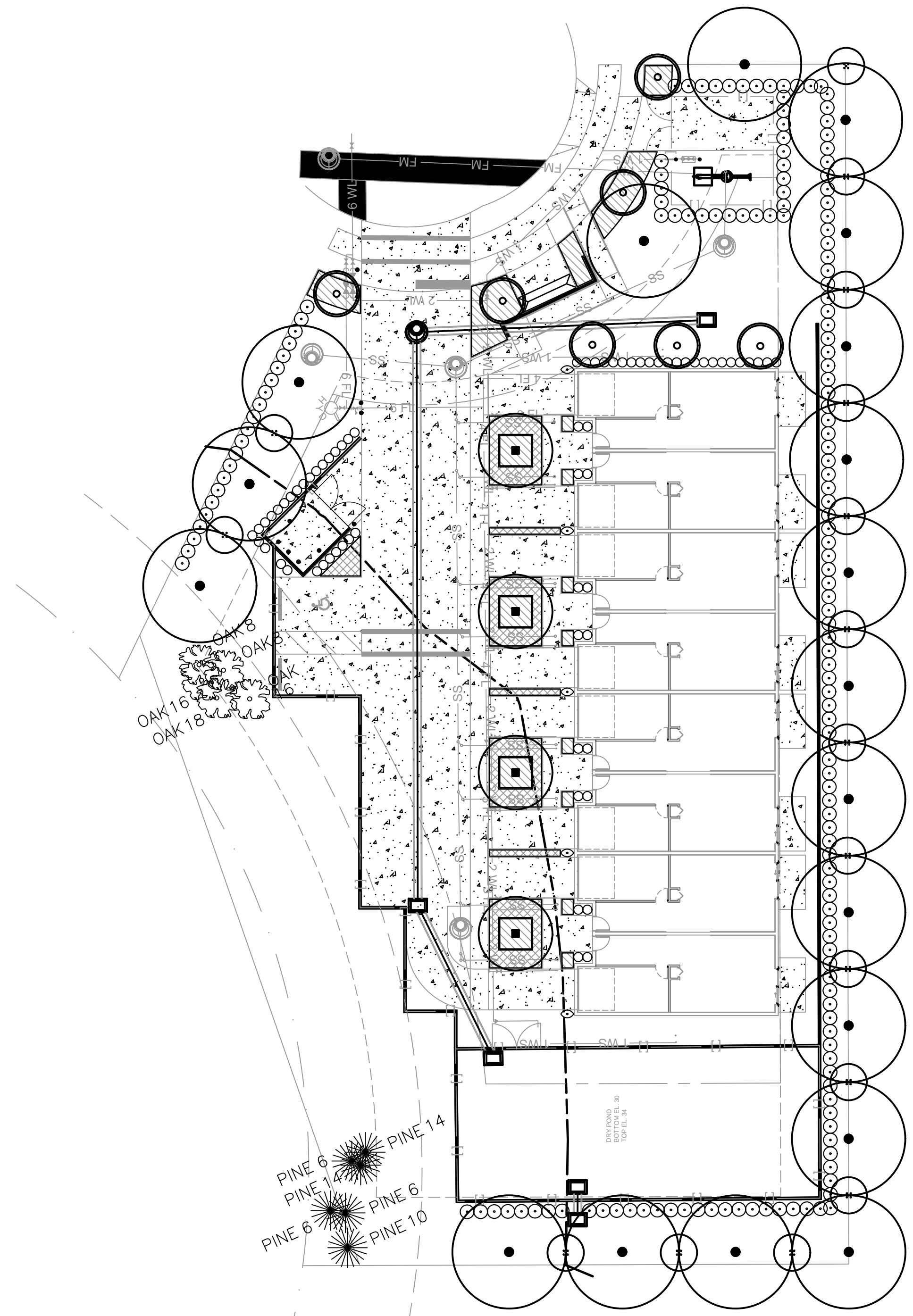
REVISIONS
1) 6/19/22 Comments
2) 8/1/22 Erosion
3) 8/1/22 Erosion
4) 8/1/22 Erosion
5) 8/1/22 Erosion
6) 8/1/22 Erosion
7) 8/1/22 Erosion
8) 8/1/22 Erosion

Tree Mitigation Plan
The View Deltona
City of Deltona, Florida

DATE: 12-20-21
JOB #: 2021-028
PERMIT #
DRAWN BY: BRB
FILE NAME: Tree Mitigation
SCALE: 1" = 20'

TM100

IF LESS THAN 24"x36" SHEET HAS BEEN REDUCED, ADJUST THE SCALE TO THE DRAWING ACCORDINGLY.



LANDSCAPE TABULATION

GENERAL REQUIREMENTS

City of Deltona Land Development Code Applies
Section 110-808, Landscaping Requirements

Landscape Adjacent to Street Right-of-Way:
(3 canopy, 3 understory per 100 l.f.)

Northwest \approx 101' - 38' (Impervious) = 63'
Trees Required: 2 Canopy, 2 Understory
Trees Provided: 3 Canopy, 3 Understory

Landscape Adjacent to Other Properties:
(4 canopy, 4 understory per 100 l.f.)

South \approx 95'
Trees Required: 4 Canopy, 4 Understory
Trees Provided: 4 Canopy, 4 Understory

East \approx 265'
Trees Required: 11 Canopy, 11 Understory
Trees Provided: 11 Canopy, 11 Understory

West \approx 74'
Trees Required: 3 Canopy, 3 Understory
Trees Provided: 3 Canopy, 3 Understory

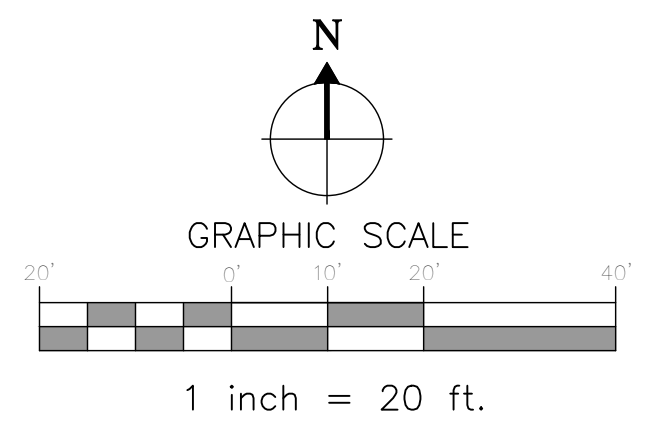
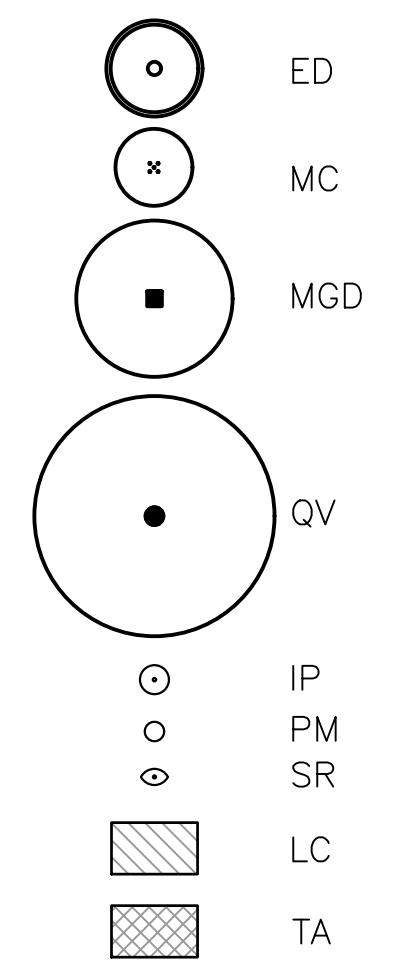
NOTES:

- 1) Irrigation system to be a permanent system.
- 2) The irrigation plan shall be designed and installed to conform to this code.
- 3) All plant material shall be FL Grade #1 and "Florida Friendly".

Plant List - Conway Apartments

CNT	SYM	BOTANICAL	COMMON	SPECIFICATIONS
Trees				
7	ED	Elaeocarpus decipiens	Japanese Blueberry	7' ht., 3' spr., 2.5" cal.
16	MC	Myrica cerifera	Wax Myrtle	7' ht., 3' spr., multi.
4	MGD	Magnolia grandiflora 'Bracken's Brown Beauty'	Bracken's Brown Beauty Magnolia	10' ht., 4' spr., 3" cal.
19	QV	Quercus virginiana	Live Oak	10' ht., 4' spr., 3" cal.
Shrubs & Groundcover				
166	IP	Illicium parviflorum	Yellow Anise	24-30" ht. x 18-24" spr., 36" o.c.
67	PM	Podocarpus macrophyllus	Podocarpus	3 gal., full, 24" o.c.
5	SR	Strelitzia reginae	Orange Bird of Paradise	7 gal., full, as shown
162	LC	Loropetalum chinense	Loropetalum	3 gal., full, 24" o.c.
588	TA	Trachelospermum asiaticum	Asiatic Jasmine	4" pot, 12" o.c.
Sod & Mulch				
	MULCH		Mini Pine Bark	3" depth
	SOD	Paspalum notatum	Bahia Sod	solid sod, weed free, count by contractor

PLANT SYMBOLS



LANDSCAPE ARCHITECT:
Robert R. Buchanan LA0000932

48 HOURS BEFORE YOU DIG
CALL SUNSHINE
1-800-477-6111
IT'S THE LAW IN FLORIDA

CONTRACTOR MUST REVIEW
ALL GENERAL LANDSCAPE
NOTES PRIOR TO BIDDING AND
CONSTRUCTION

Hovel Construction, LLC
Orlando, FL 32819

LANDSCAPE
DYNAMICS
LANDSCAPE ARCHITECTS AND PLANNERS, LLC

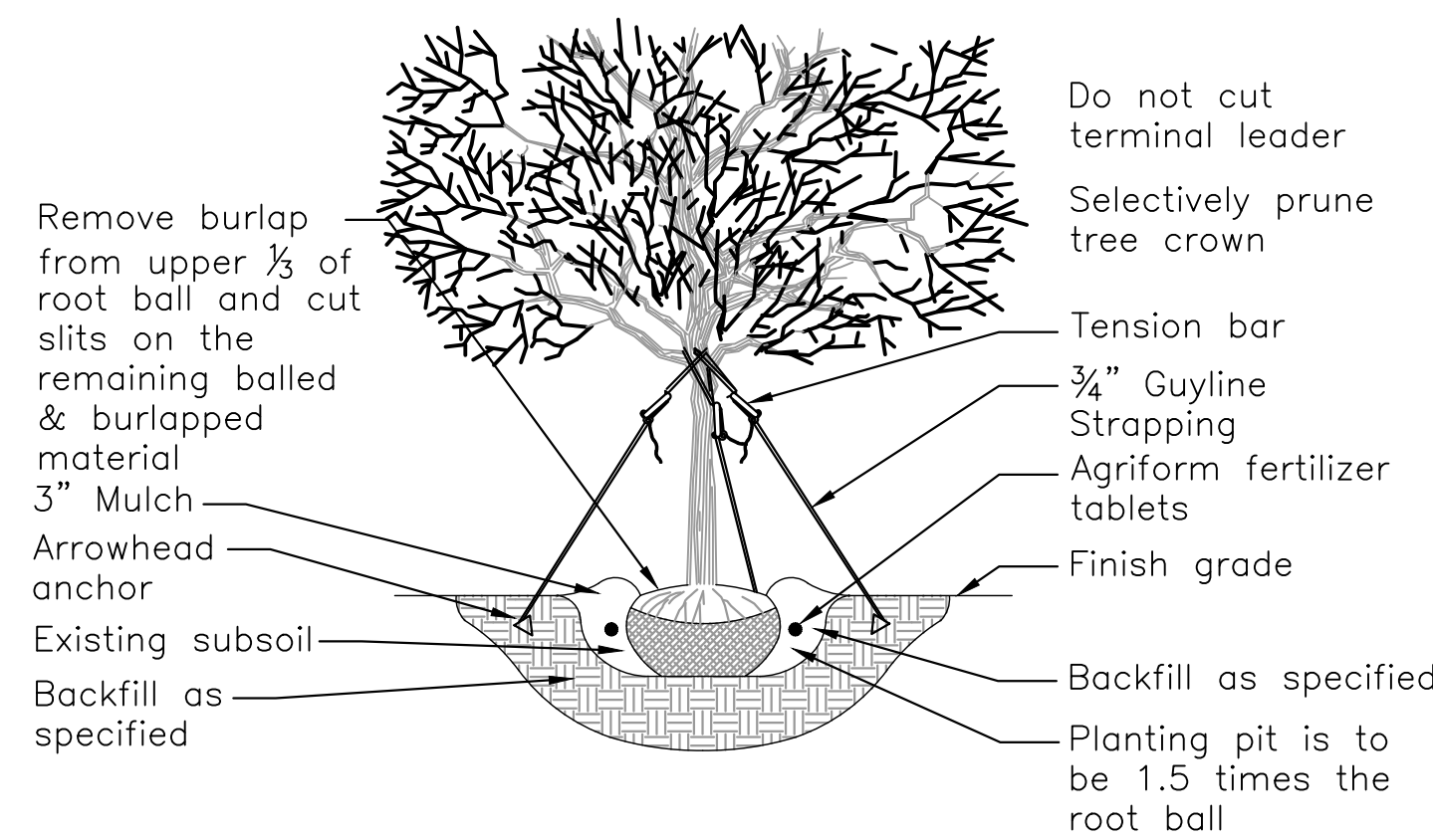
P.O. BOX 2852 - Winter Park, Florida 32790-2852 - Phone 407-579-8111 - Email randy@landscapedynamics.com

Landscape Plan
The View Deltona
City of Deltona, Florida

REVISIONS
1) 6/19/22 Comments
2) 8/1/22 Erosion
3) 8/1/22 Erosion
4) 8/1/22 Erosion
5) 8/1/22 Erosion
6) 8/1/22 Erosion
7) 8/1/22 Erosion
8) 8/1/22 Erosion

DATE: 12-20-21
JOB #: 2021-028
PERMIT #
DRAWN BY: BRB
FILE NAME: LANDSCAPE
SCALE: 1" = 20'

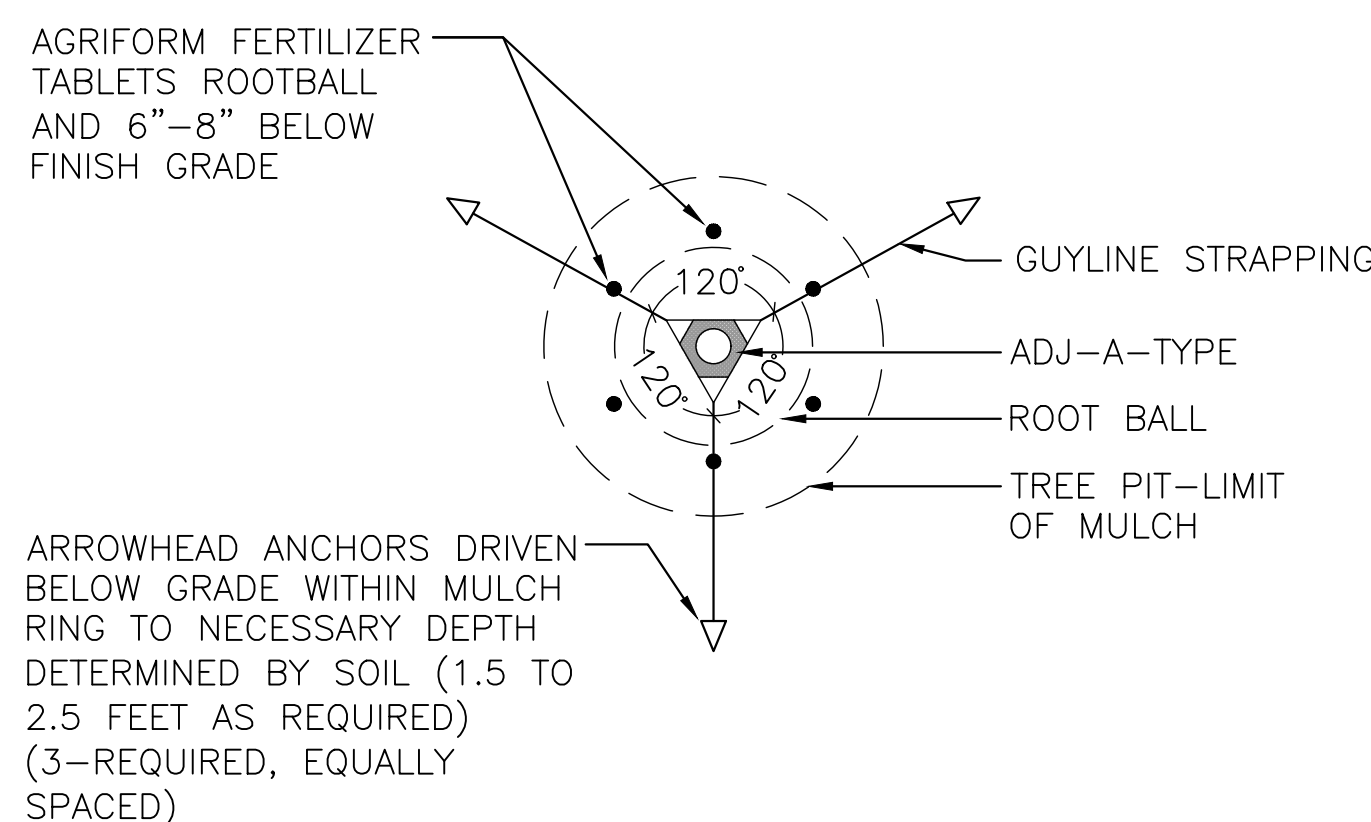
L100



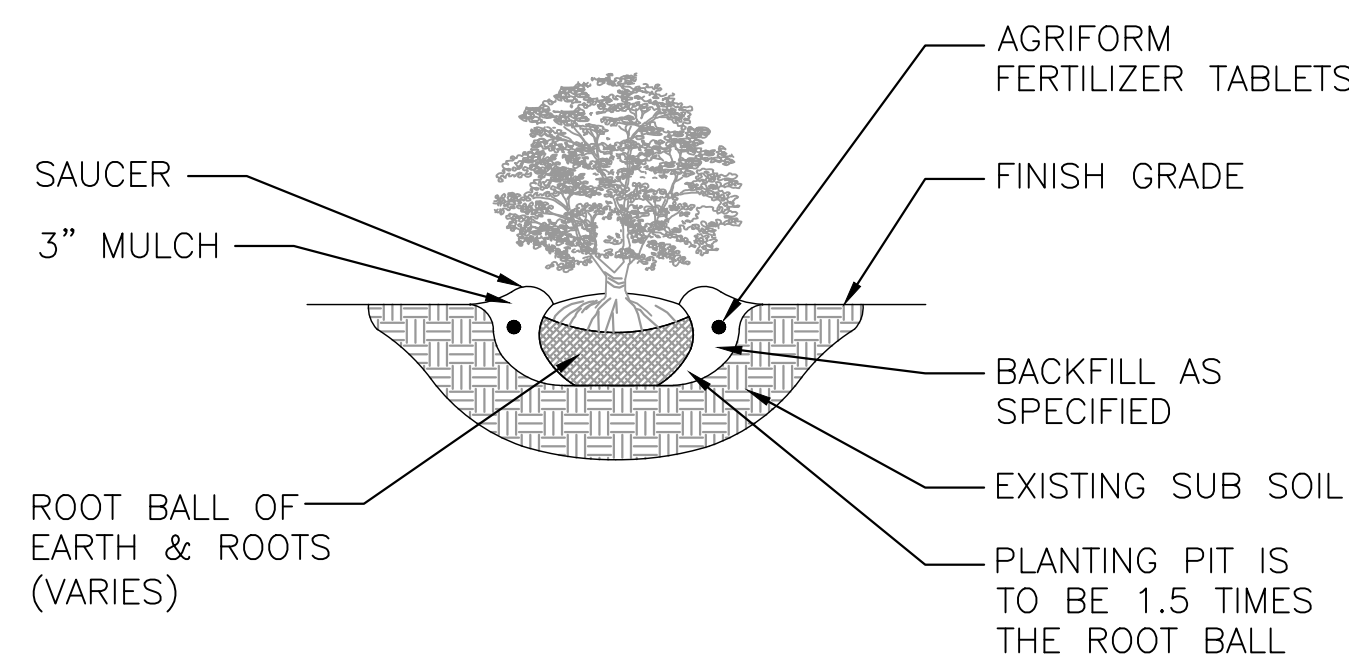
PRO20:
For up to 2" Caliper Trees
(3) ARBORGUY™ Guylines 3/4" x 12' = 600 lb test Black or Green, UV resistant, polypropylene strapping
(3) "Tool-Free" Tension Bars™
(3) Arrowhead *Anchors (4" x 3-3/4")

PRO40:
For up to 4" Caliper Trees
(3) ARBORGUY™ Guylines 1"x12' = 600 lb test, Black or Green, UV resistant polypropylene strapping
(3) "Tool-Free" Tension Bars™
(3) Arrowhead Anchors (4-3/4"x3-3/4")

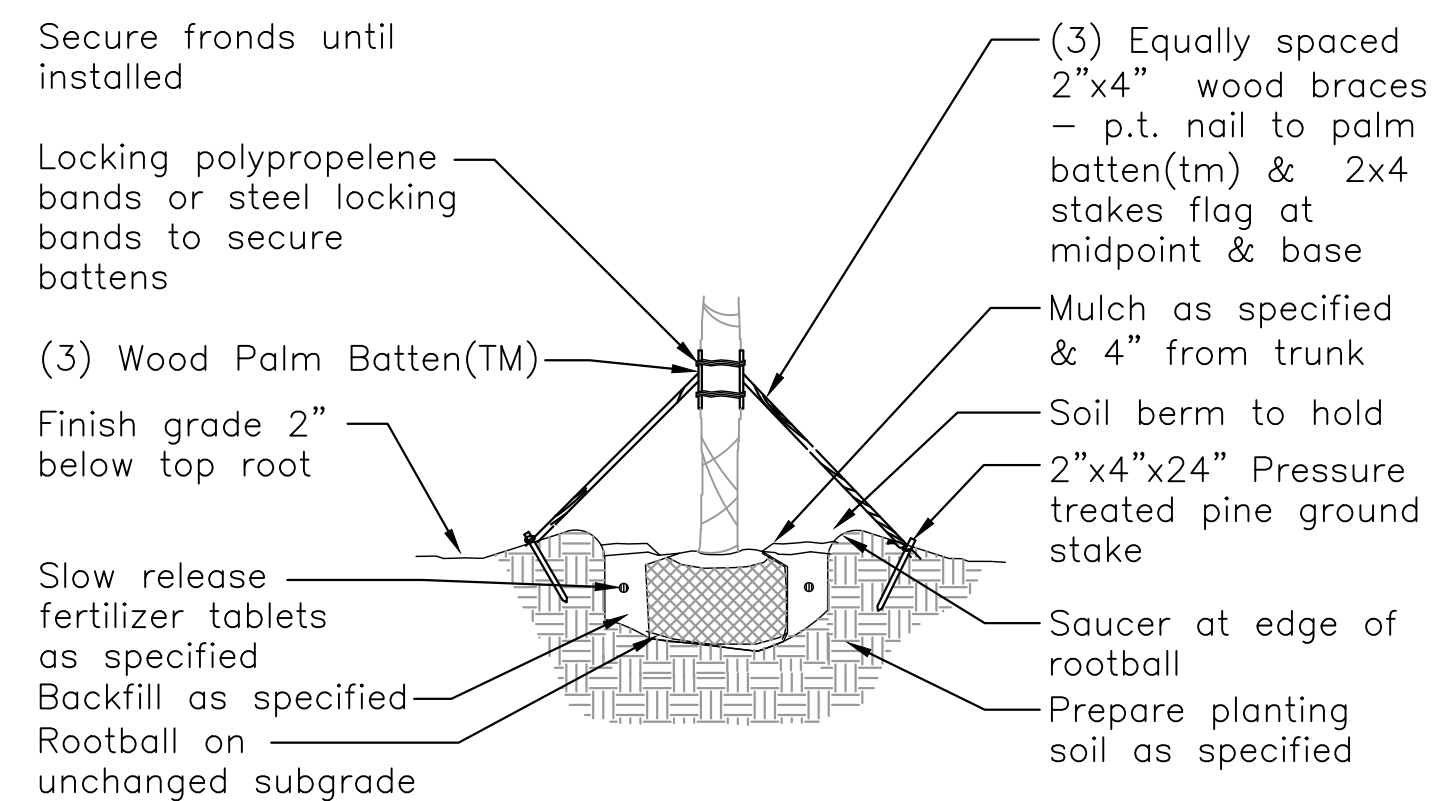
1 ARBORGUY PRO20/PRO40 STAKING AND PLANTING DETAIL
L200 SCALE= N.T.S.



3 TREE STAKING DETAIL
L200 SCALE= N.T.S.



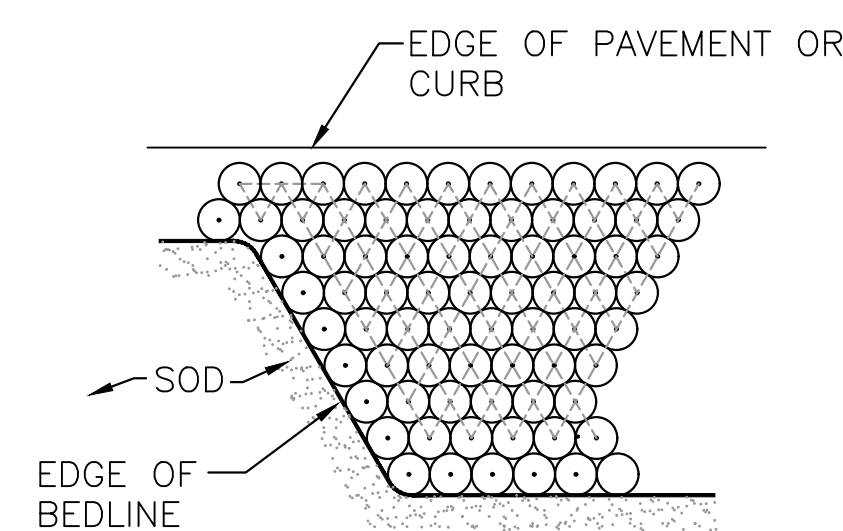
5 TYPICAL SHRUB/GROUNDCOVER PLANTING DETAIL
L200 SCALE= N.T.S.



PBKM (Metal Bands)
(3) 1 1/2"x3 1/2"x12" (2x4 wood) batters with 5 layers of burlap backing and (4) staple guides for banding, pre-notched (to accept 2"x4"x8' support braces)
(2) 44" plated carbon steel bands with tensioning and locking screw / clamp

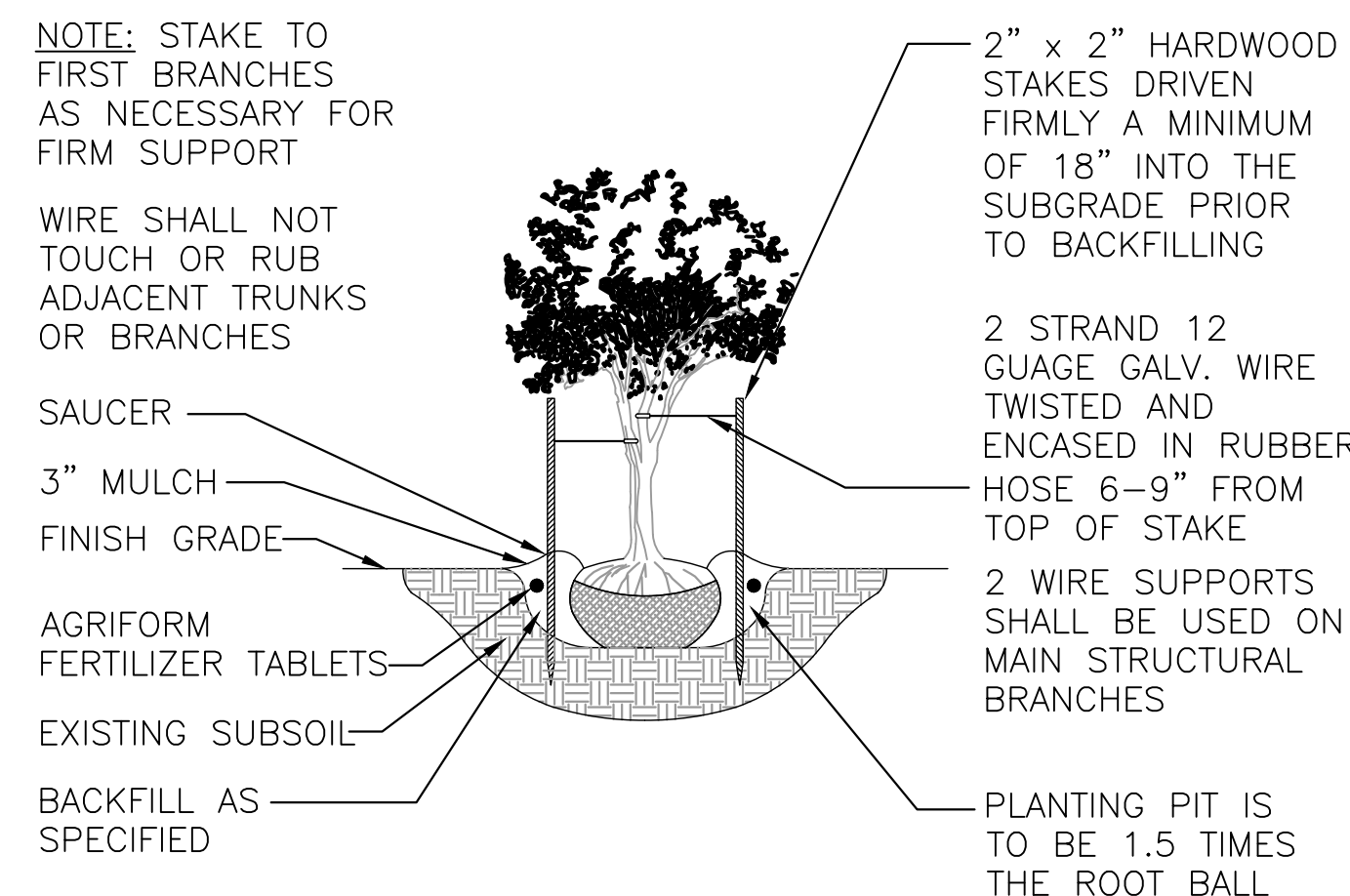
PBKC (Polypropylene Bands)
(3) 1 1/2"x3 1/2"x12" (2x4 wood) batters with 5 layers of burlap backing and (4) staple guides for banding, pre-notched (to accept 2"x4"x8' support braces)
(2) 8'x1", 600 lb test webbing bands with metal spring locking clamps

2 ARBORGUY PALM BATTEN DETAIL
L200 SCALE= N.T.S.



NOTE: FORM EDGE OF BED, THEN FILL IN BED AT TRIANGULAR SPACING AS SPECIFIED ON PLANT LIST.

4 TYPICAL SPACING DETAIL
L200 SCALE= N.T.S.



6 MULTI-TRUNK STAKING DETAIL
L200 SCALE= N.T.S.

GENERAL LANDSCAPE NOTES:

Failure to notify Landscape Architect of plan, detail, or specification discrepancies prior to construction, makes contractor responsible for all costs incurred for construction charges, not the owner or his representative (Landscape Dynamics) The Owner must maintain the height of all plants within the "Line-Of-Site" triangle area to a height of no greater than 24" above grade for shrubs and groundcover, and tree branching no lower than 72" above finish grade, to ensure clear site line views toward traffic at road and driveway intersections. Landscape Dynamics is not responsible for continued maintenance of such plant material. The owner, leasing company and/or the landscape maintenance company accepts full responsibility for these maintenance requirements.

- Landscape contractor (LC) shall be responsible for all materials and work called for on the landscape plans and in the landscape notes and legend. Plant specifications are minimum acceptable sizes. Plans shall rule if there are any quantity discrepancies between the legend and plans. Final quantity takeoffs are the responsibility of the LC. Notify the Landscape Architect of any discrepancies.
- LC shall comply with all local codes and ordinances and obtain all permits and bonds necessary to construct the project.
- LC shall coordinate their work with other contractors to assure efficient and timely completion of the work.
- LC shall be responsible for supplying all materials, labor, and equipment for the performance of their portion of the work.
- LC to verify all existing grades, dimensions, adequate drainage, suitable planting soil and field conditions and notify owner of discrepancies before proceeding with work. Per FL Statutes, LC to call Sunshine State One (811) 72 hours prior to digging to have all utilities located.
- LC to protect existing utilities, structures, surfaces, and vegetation noted to be saved and be responsible for repair/replacement.
- Protect trees to be saved per detail. Vehicle parking, material storage, or soil removal/addition is not permitted within driplines.
- Round-Up shall be applied twice at ten day intervals onto all existing vegetation, sod, and groundcover areas that are to be replanted. Extreme care shall be taken to prevent overspray and/or drift onto existing plant material to be saved. Mfr's recommendations shall be followed. Remaining weeds and their roots shall be removed by hand prior to installation of plants.
- Resprouting weeds and plants are the responsibility of the LC through the one year warranty period.
- All plant materials shall be graded Florida No. 1 or better as outlined under current Grades and Standards for Nursery Plants, Division of Plant Industry, State of Florida, unless otherwise noted. All plants not listed shall conform to a Florida No. 1 or better as to: (1) health and vitality, (2) condition of foliage, (3) root system, (4) freedom from pest or mechanical damage, (5) heavily branched and densely foliated according to the accepted normal shape of the species. LC to obtain written certification from nurseries that plant materials are Florida No. 1 or better. Trees up to 4" caliper measured at 6" above soil line and over 4" caliper at 12" above soil line unless otherwise noted. All specifications to be met or exceeded unless otherwise noted. All rootballs and containers to be free of weeds and their roots.
- Planting soil of Fla. peat mixed 1/2 with clean topsoil for the backfilling of plant pits and beds shall be required only if existing soil is unsuitable for planting and/or contains lime rock or construction debris (to be removed).
- Trees and palms shall be installed so their top main root at the trunk is visible and 2" above finished grade. If root is buried, remove soil from the top of the rootball prior to installation. Do not apply the 1 1/2" of mulch to the top of the rootball until after inspection of each tree or palm.
- Landscape Architect is not responsible for adverse soil or drainage conditions, determining sub-surface soil conditions, underground objects/utilities or the accuracy of property lines or information portrayed on surveys or on documents or plans provided by others. Owner or their agent is solely responsible for future maintenance of all plantings to maintain safe visibility within all visibility sight triangles and vehicular use and pedestrian areas within and immediately adjacent to the site.
- Finished grade prior to mulching or sodding to be 3" below top of adjacent surfaces such as walks, curbs and driveways extending perpendicularly from the surface edge for a minimum distance of 18". See detail.
- All palms, trees, shrubs, and groundcovers shall be fertilized with Agriform 20-10-5 or SierraTabs 16-8-12 planting tablets. One tablet/ 1 gal, 2 tablets/ 3 gal, 3 tablets/ 5 or 7 gal, 4 tablets/ 10 gal and one tablet/ each 1/2" of tree trunk diameter. Application shall be as per the details and mfr's recommendation.
- All planting beds (except for annuals) and trees to receive med. pine bark mulch. Due to environmental concerns, cypress mulch shall NOT be used. All tree rootballs (which require 4 foot wide mulch rings in turf areas) shall be mulched to a maximum 1 1/2" depth (to aid water penetration) following inspection. All other planting beds to receive a 3" depth. Mulch shall not touch trunks or stems or be applied within the crowns of groundcovers or over their branches or foliage. Mulch is to be applied by hand and shall not be "blown in".
- LC to maintain all plant material in a plumb, upright and stable condition. All trees/palms to be guyed/staked as per details.
- LC to remove all bags (unless biodegradable), tags, ties, wires, ropes, stakes and nursery attachments from all plant material.
- LC shall be responsible to keep plant material in a healthy, hand watered, insect/pest free condition until owner's final acceptance.
- LC to provide a one-year warranty for trees/palms, shrubs, groundcovers, and vines and thirty days for sod. Warranty period shall start with final acceptance by owner. All plant material shall be alive and in satisfactory growth at the end of the warranty period. Replacement plant material shall be warranted for ninety days (sod for thirty days) from replacement date.
- Warranty shall apply only to material that dies due to poor quality, improper handling, or installation practices. Generally, material transplanted on-site shall not be warranted. Adverse weather conditions shall not apply. Proper watering and maintenance are the owner's responsibility during the warranty period.
- Provide 100% coverage of all landscape areas using automatic underground irrigation system with rain sensor.

IF LESS THAN 24"x36" SHEET HAS BEEN REDUCED, ADJUST THE SCALE TO THE DRAWING ACCORDINGLY.

LANDSCAPE ARCHITECT:
Robert R. Buchanan LA000932

48 HOURS BEFORE YOU DIG
CALL SUNSHINE
1-800-477-6111
IT'S THE LAW IN FLORIDA
FLORIDA LAW REQUIRES
CONTRACTORS TO REPORT
UNDERGROUND UTILITIES
FACILITIES NO LESS THAN TWO
(2) DAYS PRIOR TO CONSTRUCTION

CONTRACTOR MUST REVIEW
ALL GENERAL LANDSCAPE
NOTES PRIOR TO BIDDING AND
CONSTRUCTION

Hovel Construction, LLC
Orlando, FL 32819

LANDSCAPE
Dynamics
LANDSCAPE ARCHITECTS AND PLANNERS, LLC

REVISIONS
1. 6/19/25 Comments
2. 8/1/25 Base
3.
4.
5.
6.
7.
8.

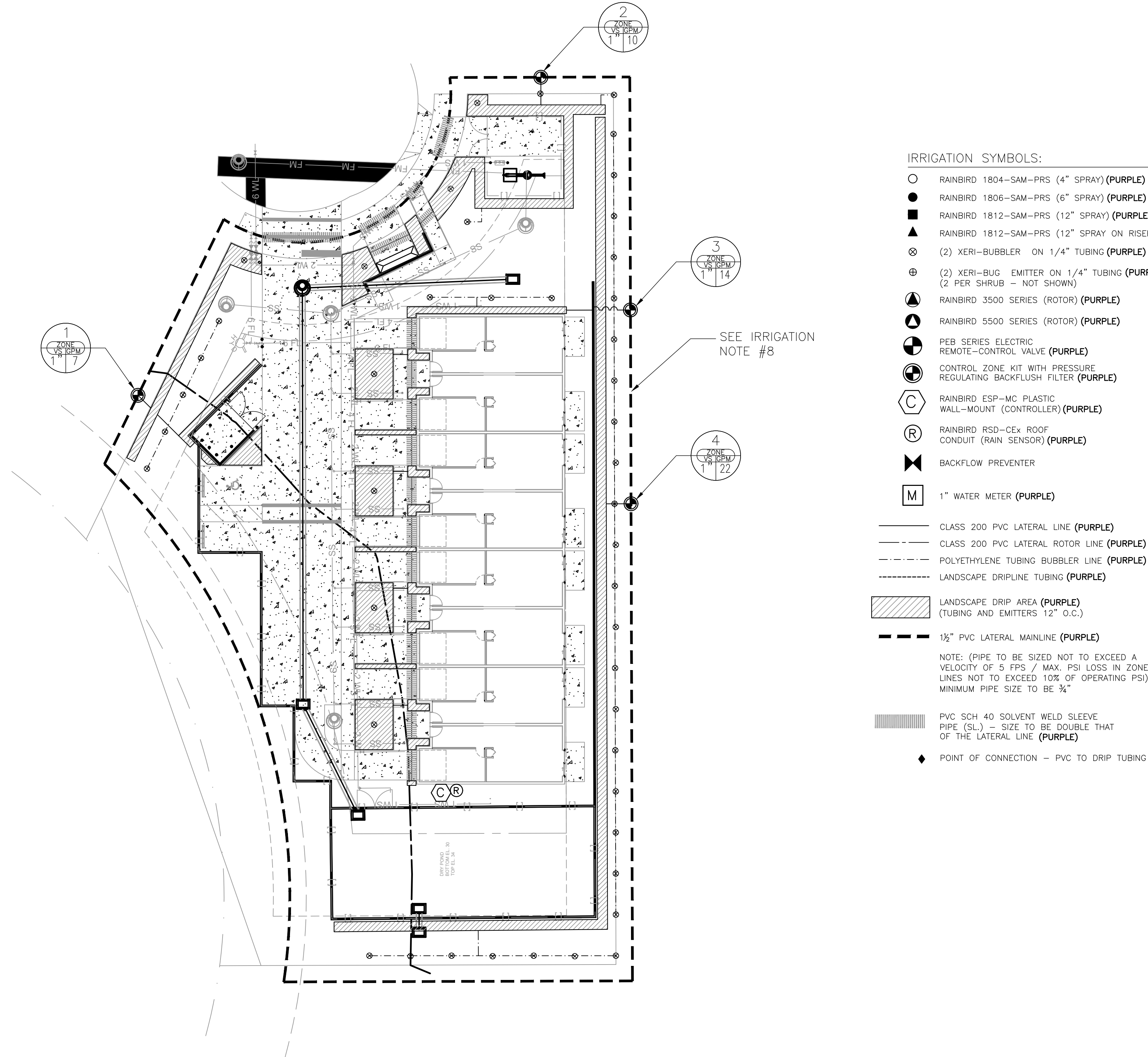
DATE: 12-20-24
JOB #: 2021-029
PERMIT #
DRAWN BY: BRB
FILE NAME: LANDSCAPE
SCALE: N.T.S.

P.O. BOX 2852 - Winter Park, Florida 32790-2852 - Phone: 407-579-6111 - Email: randy@landscape-dynamics.com

Landscape Details and Specs.
The View Deltona
City of Deltona, Florida

L200

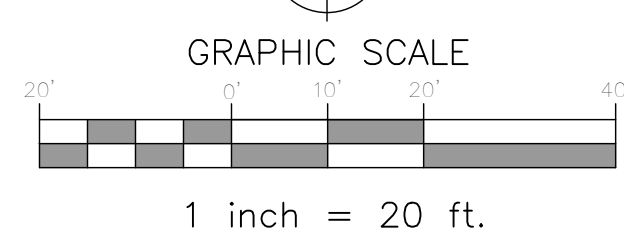
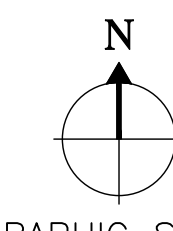
IF LESS THAN 24"x36" SHEET HAS BEEN REDUCED, ADJUST THE SCALE TO THE DRAWING ACCORDINGLY.



- IRRIGATION SYMBOLS:**
- RAINBIRD 1804-SAM-PRS (4" SPRAY) (PURPLE)
 - RAINBIRD 1806-SAM-PRS (6" SPRAY) (PURPLE)
 - RAINBIRD 1812-SAM-PRS (12" SPRAY) (PURPLE)
 - ▲ RAINBIRD 1812-SAM-PRS (12" SPRAY ON RISER) (PURPLE)
 - ⊗ (2) XERI-BUBBLER ON 1/4" TUBING (PURPLE)
 - ⊕ (2) XERI-BUG EMITTER ON 1/4" TUBING (PURPLE) (2 PER SHRUB - NOT SHOWN)
 - ▲ RAINBIRD 3500 SERIES (ROTOR) (PURPLE)
 - ▲ RAINBIRD 5500 SERIES (ROTOR) (PURPLE)
 - PEB SERIES ELECTRIC REMOTE-CONTROL VALVE (PURPLE)
 - CONTROL ZONE KIT WITH PRESSURE REGULATING BACKFLUSH FILTER (PURPLE)
 - ⊕ RAINBIRD ESP-MC PLASTIC WALL-MOUNT (CONTROLLER) (PURPLE)
 - Ⓜ RAINBIRD RSD-CEx ROOF CONDUIT (RAIN SENSOR) (PURPLE)
 - ⊗ BACKFLOW PREVENTER
 - Ⓜ 1" WATER METER (PURPLE)
- CLASS 200 PVC LATERAL LINE (PURPLE)
 CLASS 200 PVC LATERAL ROTOR LINE (PURPLE)
 POLYETHYLENE TUBING BUBBLER LINE (PURPLE)
 LANDSCAPE DRIPLINE TUBING (PURPLE)
 LANDSCAPE DRIP AREA (PURPLE) (TUBING AND EMITTERS 12" O.C.)
 1/2" PVC LATERAL MAINLINE (PURPLE)
 PVC SCH 40 SOLVENT WELD SLEEVE PIPE (SL) - SIZE TO BE DOUBLE THAT OF THE LATERAL LINE (PURPLE)
 ◆ POINT OF CONNECTION - PVC TO DRIP TUBING

- GENERAL IRRIGATION NOTES:**
- 1) REFER TO THE LANDSCAPE PLANS WHEN TRENCHING TO AVOID TREES AND SHRUBS. HAND DIG AROUND ANY EXISTING TREES. DO NOT CUT ANY ROOTS OVER 2" IN DIAMETER.
 - 2) ALL MAINLINE PIPING SHALL BE BURIED TO A MINIMUM DEPTH OF 18" OF COVER. ALL LATERAL PIPING SHALL BE BURIED TO A MINIMUM DEPTH OF 12" OF COVER.
 - 3) ALL POP-UP ROTORS AND SPRAYS SHALL BE INSTALLED USING A PVC SWING PIPE CONNECTION. DO NOT USE POLYETHYLENE PIPE.
 - 4) ADJUST ALL NOZZLES TO REDUCE WATER WASTE ON HARD SURFACES & BLDG. WALLS. THROTTLE ALL VALVES ON SHRUB LINES AS REQUIRED TO PREVENT FOGGING. USE ADJUSTABLE NOZZLES WHERE REQUIRED TO AVOID ANY WATER ON BUILDING WINDOWS.
 - 5) ALL CONTROL WIRE SPLICES SHALL BE MADE IN VALVE BOXES USING KING "ONE STEP" CONNECTORS AND SEALANT WITH WIRE NUTS.
 - 6) THE CONTRACTOR SHALL PREPARE AN AS-BUILT DRAWING SHOWING ALL IRRIGATION INSTALLATION. THE CONTRACTOR SHALL NEATLY MARK IN RED INK ON A WHITE BOND PAPER COPY OF THE IRRIGATION PLAN ANY INSTALLATION THAT DEVIATES FROM THE PLAN. THE AS-BUILT DRAWING SHALL ALSO LOCATE ALL MAINLINE AND VALVES BY SHOWING EXACT MEASUREMENTS FROM HARD SURFACES. MEASUREMENTS SHALL BE MARKED ON THE PLAN EVEN WHEN THE EQUIPMENT IS INSTALLED IN THE EXACT LOCATION AS THE PLAN.
 - 7) ALL VALVES, GATE VALVES AND QUICK COUPLERS SHALL BE INSTALLED IN VALVE BOXES. THE VALVE BOXES SHALL BE PURPLE WHEN USING REUSE WATER.
 - 8) ANY PIPING SHOWN OUTSIDE THE PROPERTY LINE OR RUNNING OUTSIDE A LANDSCAPE AREA IS SHOWN THERE FOR CLARITY ONLY. ALL LINES SHALL BE INSTALLED ON THE PROPERTY AND INSIDE THE LANDSCAPE AREAS OR INSIDE A SCH. 40 SLEEVE.
 - 9) THE EXACT HEIGHT OF ANY 12" POP-UP THAT IS SHOWN IN A SHRUB BED SHALL BE DETERMINED BY THE OWNER'S REPRESENTATIVE IN THE FIELD.
 - 10) THE CONTRACTOR SHALL EXERCISE CARE SO AS NOT TO DAMAGE ANY EXISTING UTILITIES. THE CONTRACTOR SHALL BE RESPONSIBLE FOR THE IMMEDIATE REPAIRS AND COST OF ANY DAMAGE CAUSED BY THEIR WORK.
 - 11) ALL WORK SHALL BE GUARANTEED FOR ONE YEAR FROM THE DATE OF FINAL ACCEPTANCE AGAINST ALL DEFECTS IN EQUIPMENT AND WORKMANSHIP. (OR AS OUTLINED IN THE WRITTEN SPECIFICATIONS)
 - 12) ELECTRICAL SERVICE TO LOCATION OF THE CONTROLLER, WELL OR PUMP SHALL BE PROVIDED TO A JUNCTION BOX OR DISCONNECT AT THE EQUIPMENT LOCATION BY THE ELECTRICAL CONTRACTOR OR BY OWNER WHEN IT IS NOT PART OF THE BID PACKAGE.
 - 13) IT SHALL BE THE RESPONSIBILITY OF THE CONTRACTOR TO SCALE THE PLAN AND CHECK NOZZLE TYPES TO DETERMINE THE CORRECT SPACING OF THE HEADS. THE CONTRACTOR SHALL NOT SPACE THE HEADS FURTHER APART OR USE LESS HEADS THAN SHOWN ON THE PLAN. ANY CHANGES TO THE HEAD SPACING OR LAYOUT, WITHOUT THE CONSENT OF THE LANDSCAPE ARCHITECT OR OWNER, SHALL HOLD THE IRRIGATION CONTRACTOR RESPONSIBLE FOR WARRANTY OF THE PLANTS AND OR SOD IN THESE AREAS.
 - 14) IRRIGATION SYSTEM DESIGN REQUIREMENTS: 60 GPM @ A MINIMUM OF 60 PSI AT EACH POINT OF CONNECTION. THE IRRIGATION CONTRACTOR SHALL VERIFY THE AVAILABLE GPM AND PSI PRIOR TO INSTALLATION OF THE SYSTEM.
 - 15) 48 HOURS BEFORE DIGGING, CALL 1-800-432-4770 (SUNSHINE STATE ONE CALL CENTER)

SEE IRRIGATION NOTE #8



LANDSCAPE ARCHITECT:
Robert R. Buchanan LA0000932

48 HOURS BEFORE YOU DIG
CALL SUNSHINE
1-800-432-4770 or 811
IT'S THE LAW IN FLORIDA

CONTRACTOR MUST REVIEW
ALL GENERAL LANDSCAPE
NOTES PRIOR TO BIDDING AND
CONSTRUCTION

Hovel Construction, LLC
Orlando, FL 32819

LANDSCAPE
DYNAMICS
LANDSCAPE ARCHITECTS AND PLANNERS, LLC

P.O. BOX 2852 - Winter Park, Florida 32790-2852 - Phone 407-579-8111 - Email randy@landscapedynamics.com

Revisions

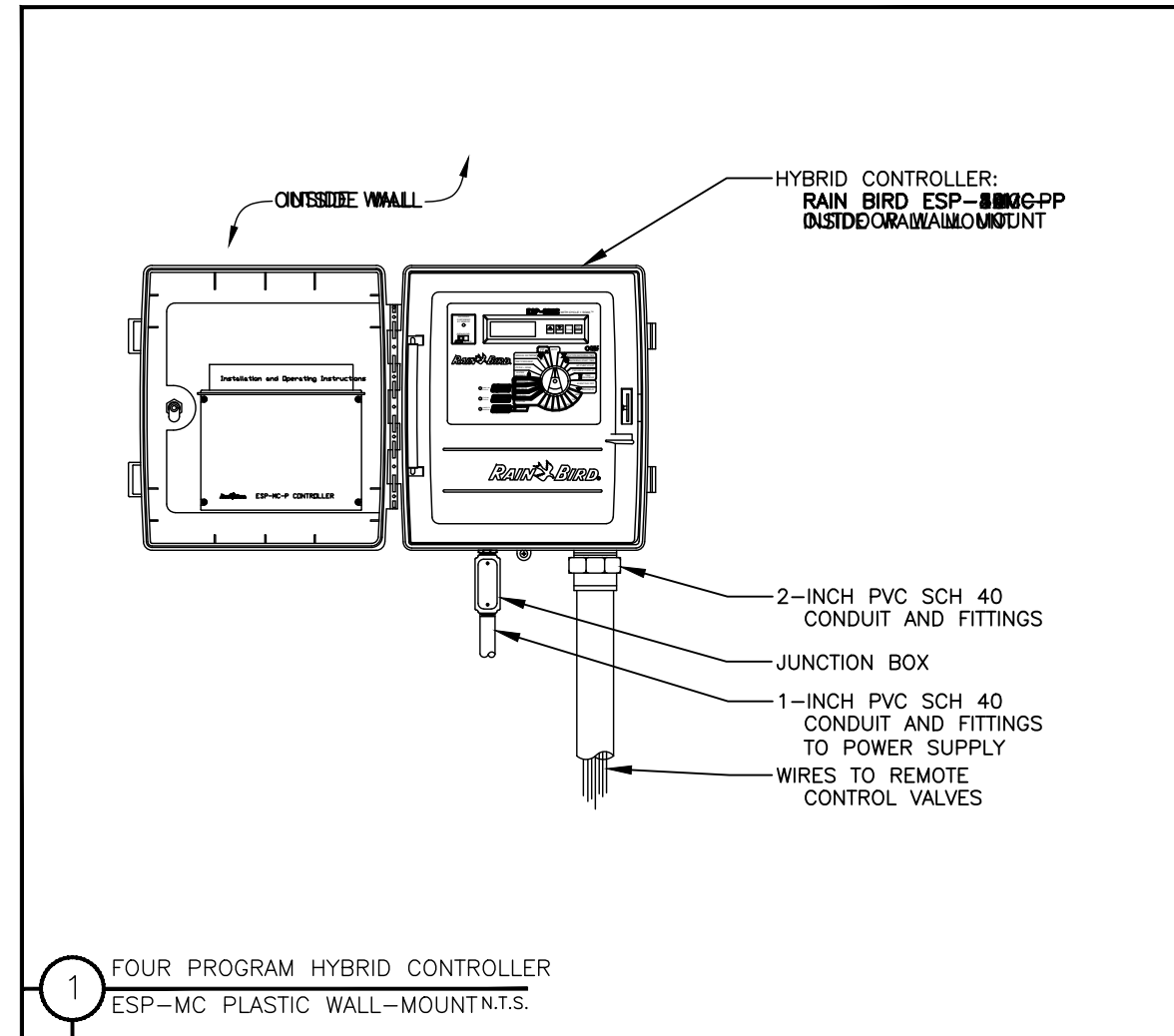
1	6/19/22	Comments
2	8/1/22	Revised
3		
4		
5		
6		
7		
8		

Irrigation Plan
The View Deltona
City of Deltona, Florida

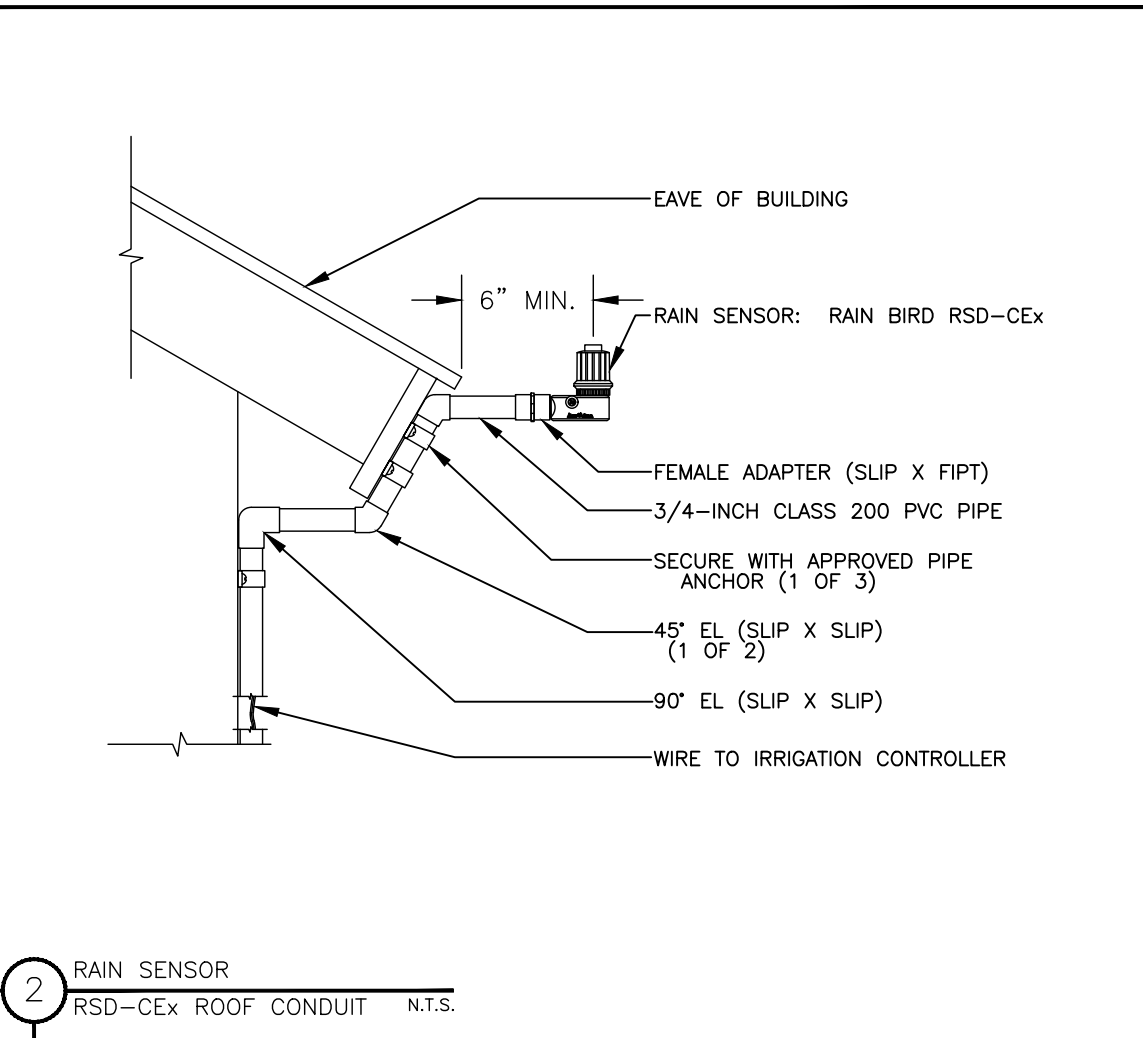
DATE: 12-20-21
JOB #: 2021-028
PERMIT #
DRAWN BY: BRB
FILE NAME: IRRIGATION
SCALE: 1" = 20'

IR100

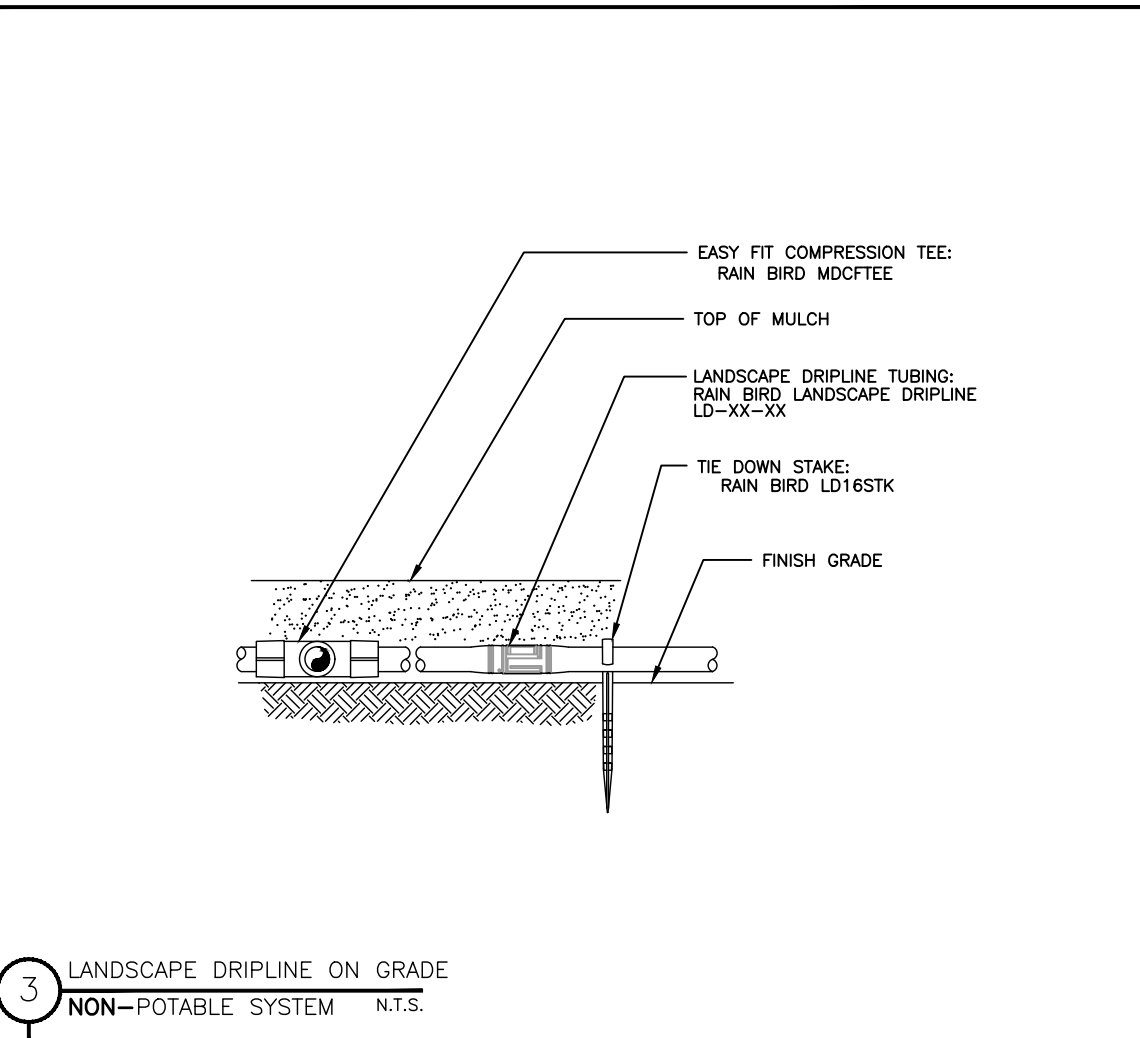
IF LESS THAN 24"x36" SHEET HAS BEEN REDUCED, ADJUST THE SCALE TO THE DRAWING ACCORDINGLY.



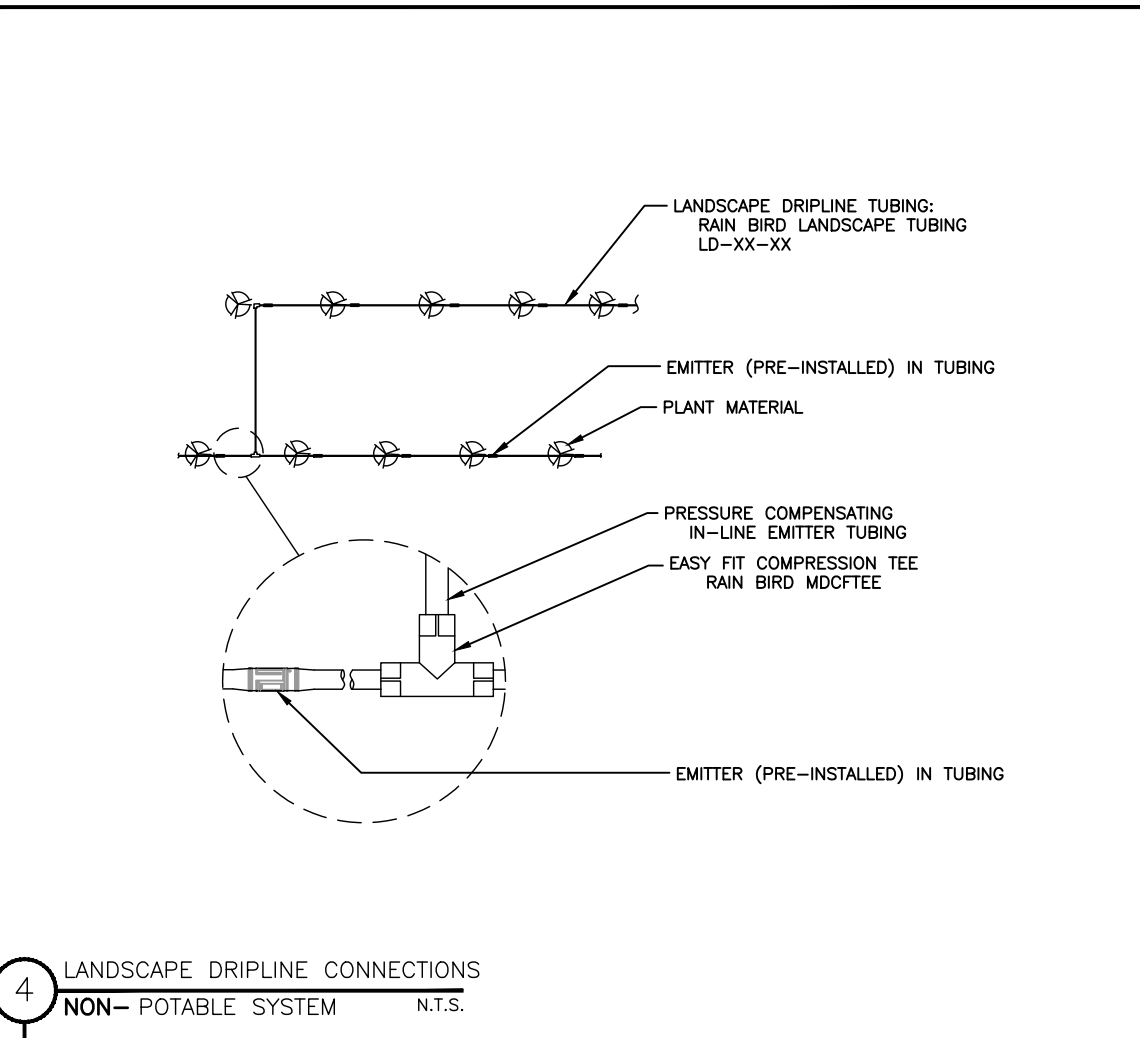
1 FOUR PROGRAM HYBRID CONTROLLER
ESP-MC PLASTIC WALL-MOUNT N.T.S.



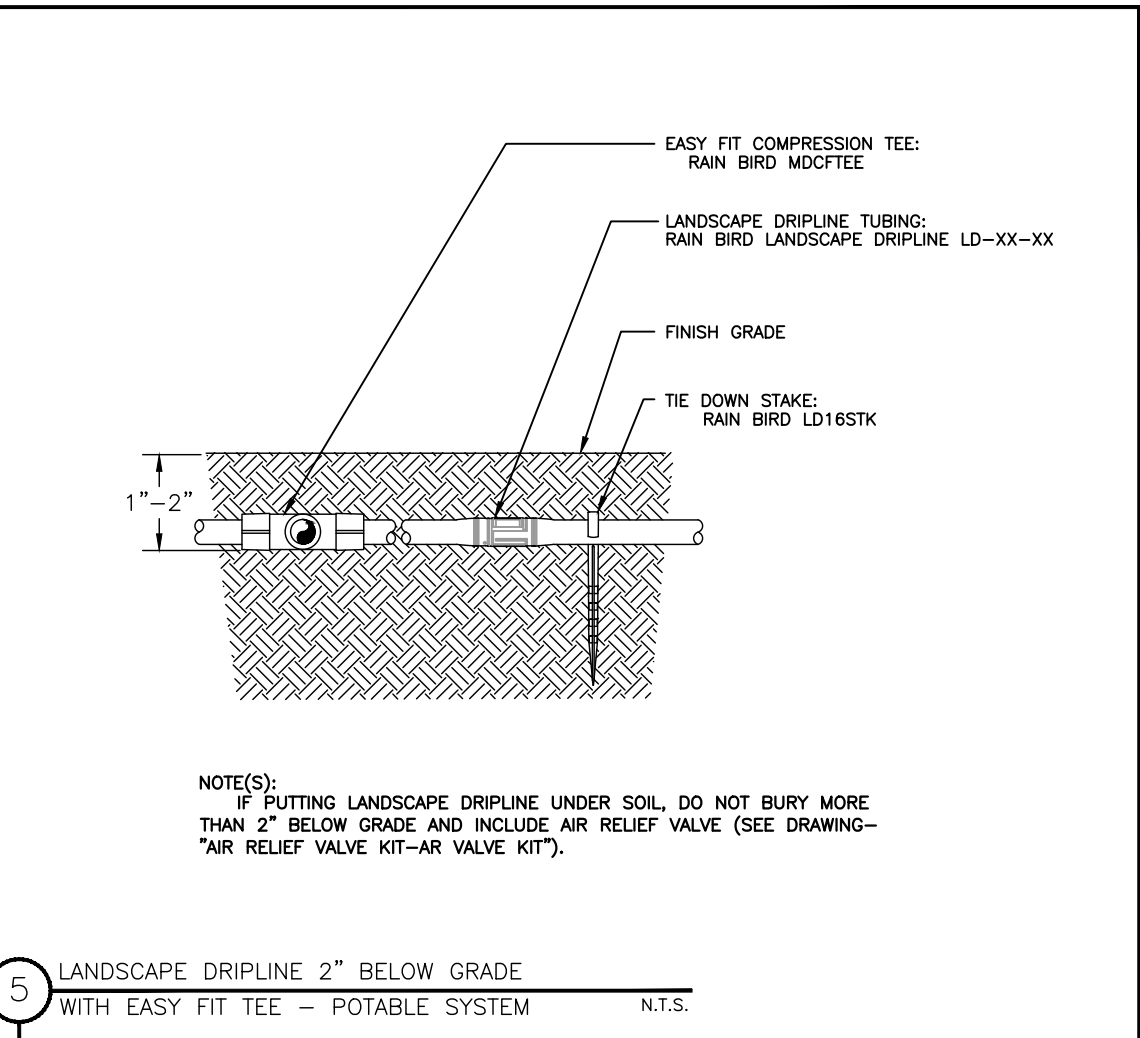
2 RAIN SENSOR
RSD-CX ROOF CONDUIT N.T.S.



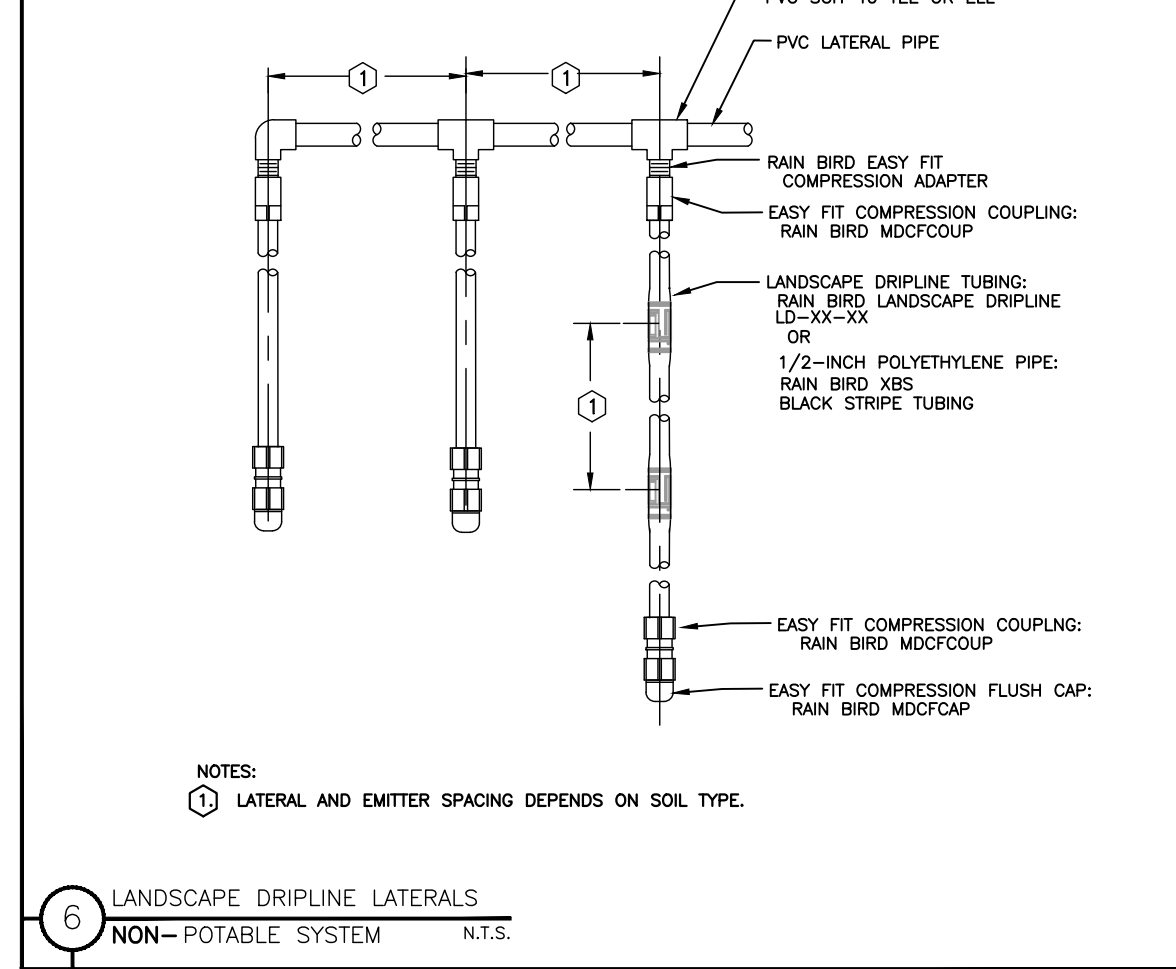
3 LANDSCAPE DRIPLINE ON GRADE
NON-POTABLE SYSTEM N.T.S.



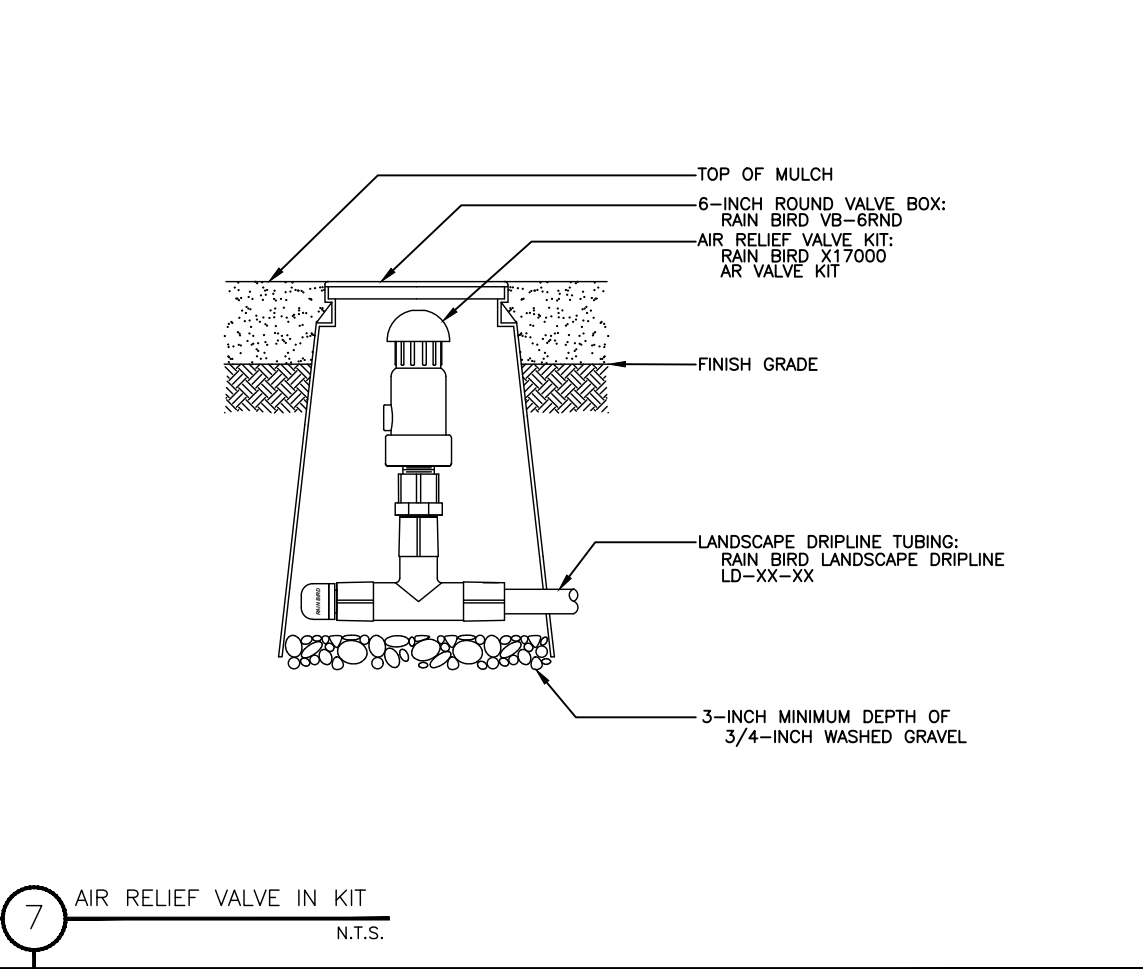
4 LANDSCAPE DRIPLINE CONNECTIONS
NON-POTABLE SYSTEM N.T.S.



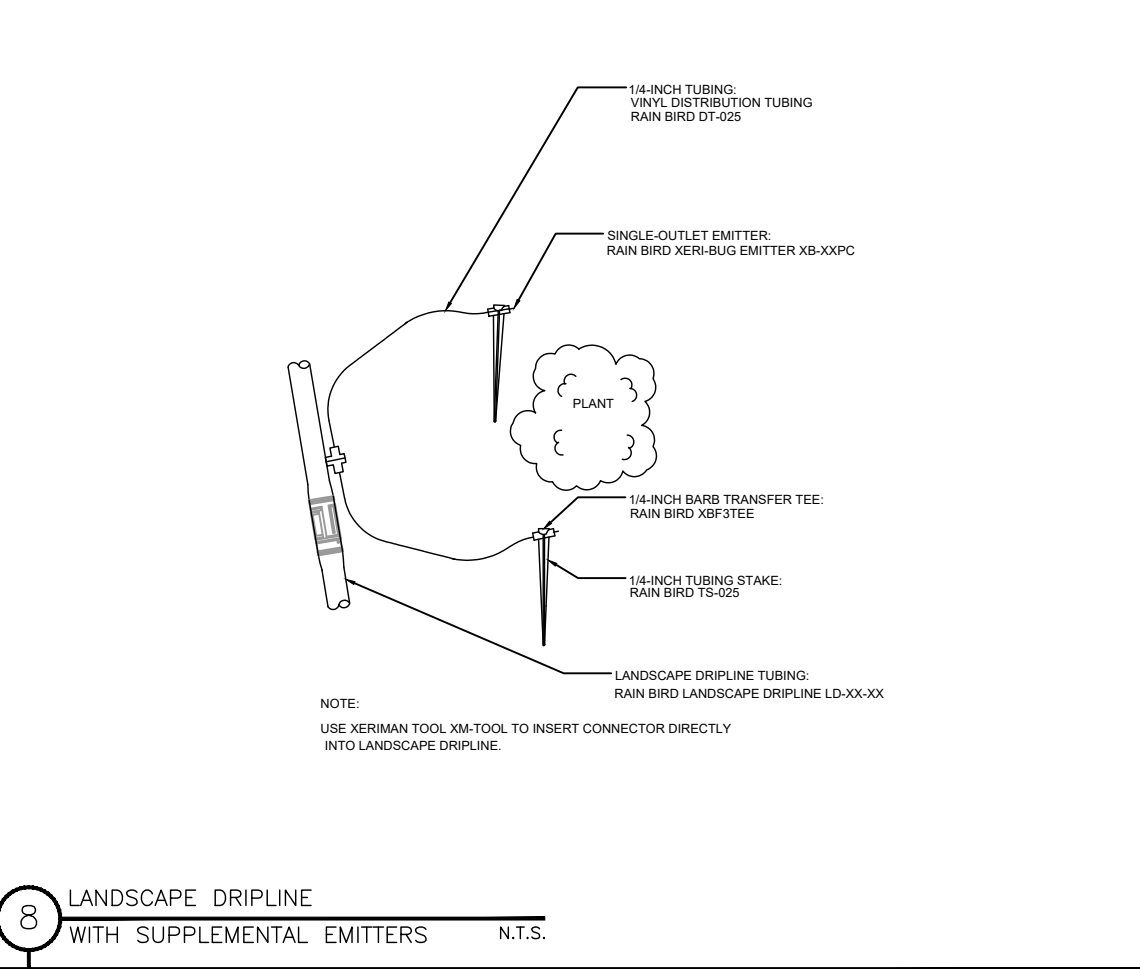
5 LANDSCAPE DRIPLINE 2" BELOW GRADE
WITH EASY FIT TEE - POTABLE SYSTEM N.T.S.



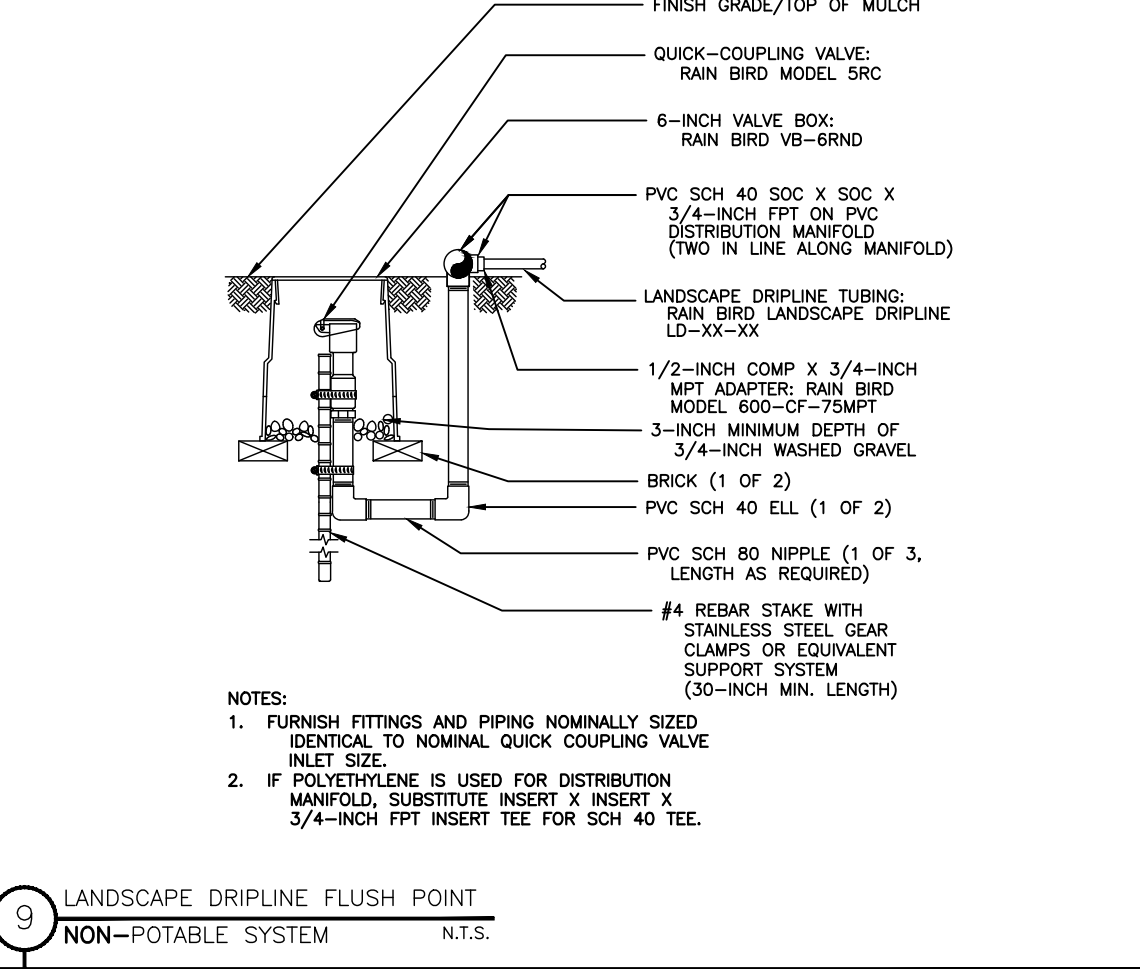
6 LANDSCAPE DRIPLINE LATERALS
NON-POTABLE SYSTEM N.T.S.



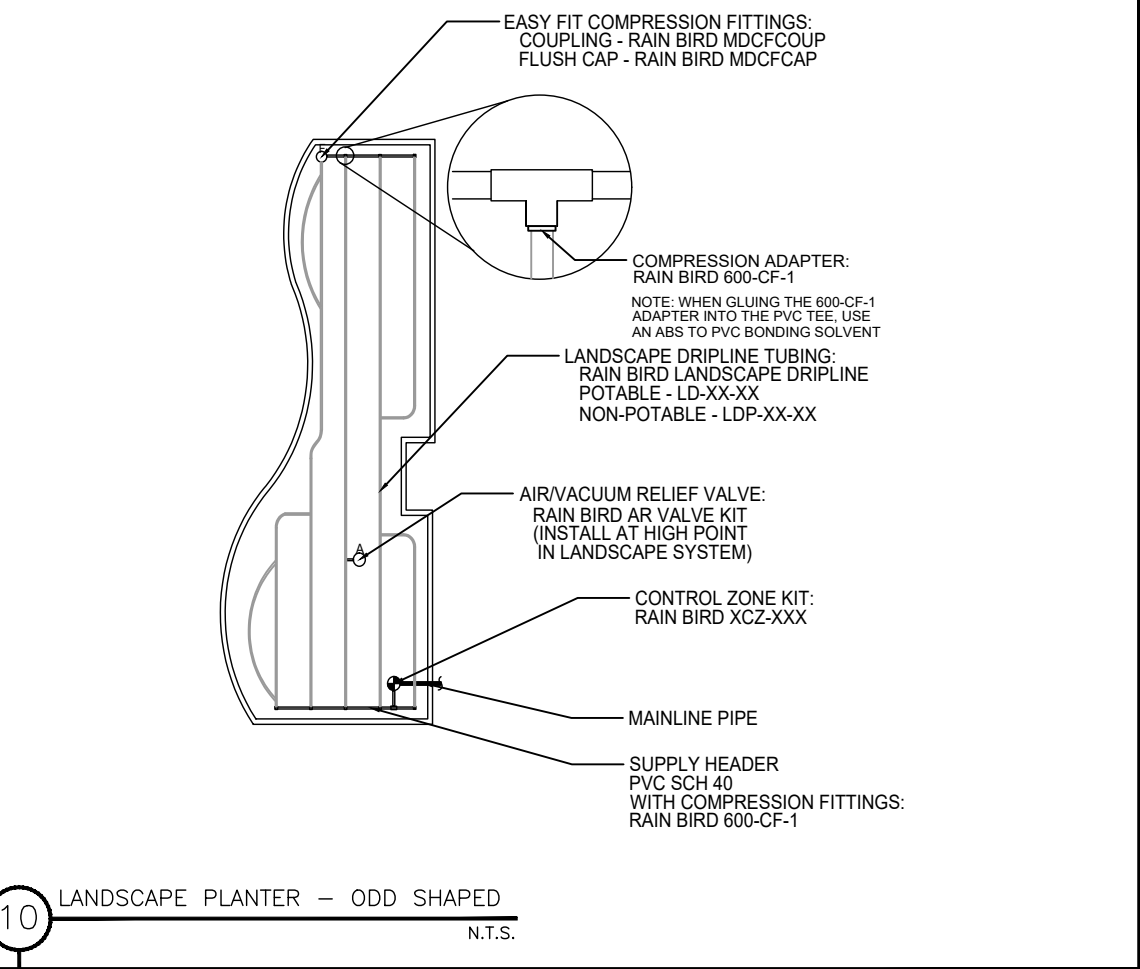
7 AIR RELIEF VALVE IN KIT
N.T.S.



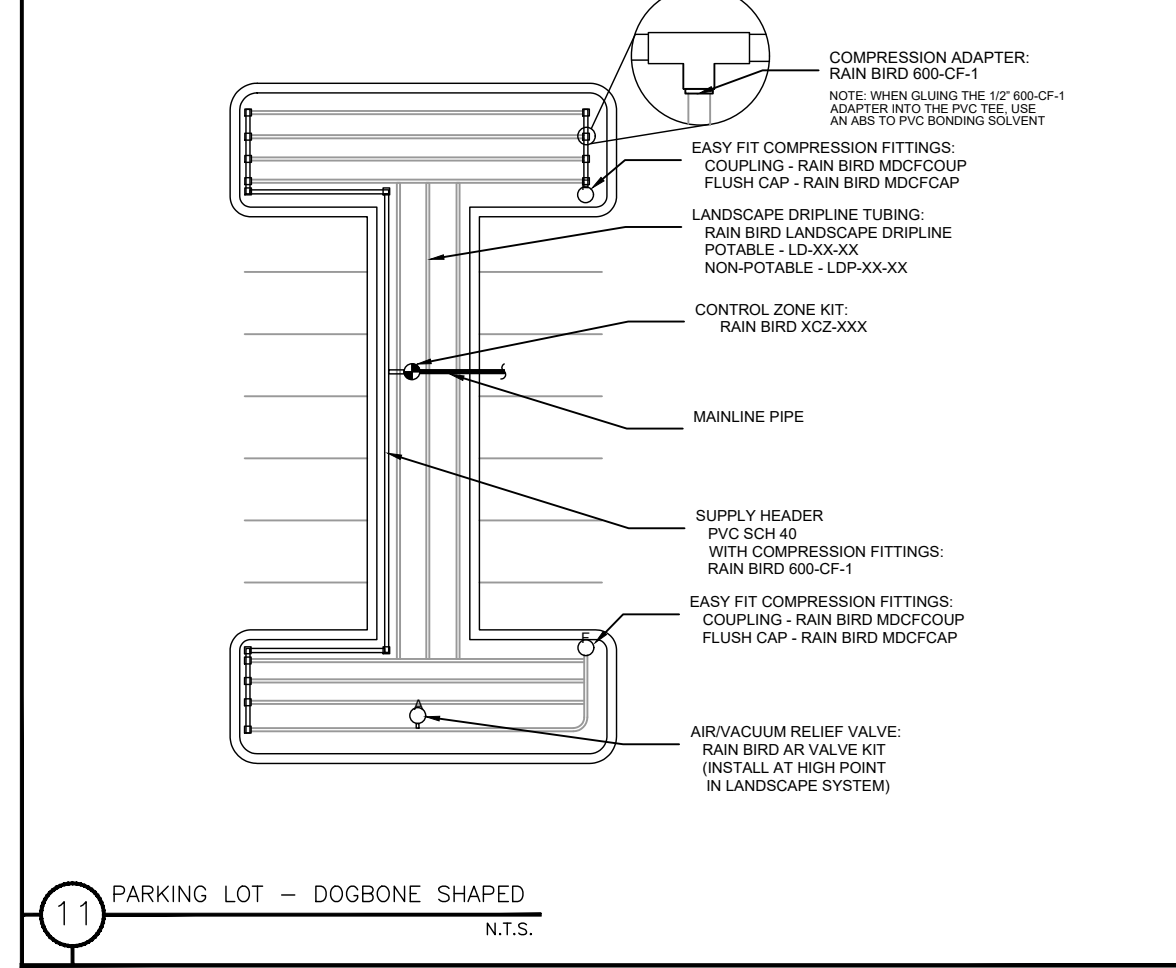
8 LANDSCAPE DRIPLINE
WITH SUPPLEMENTAL EMITTERS N.T.S.



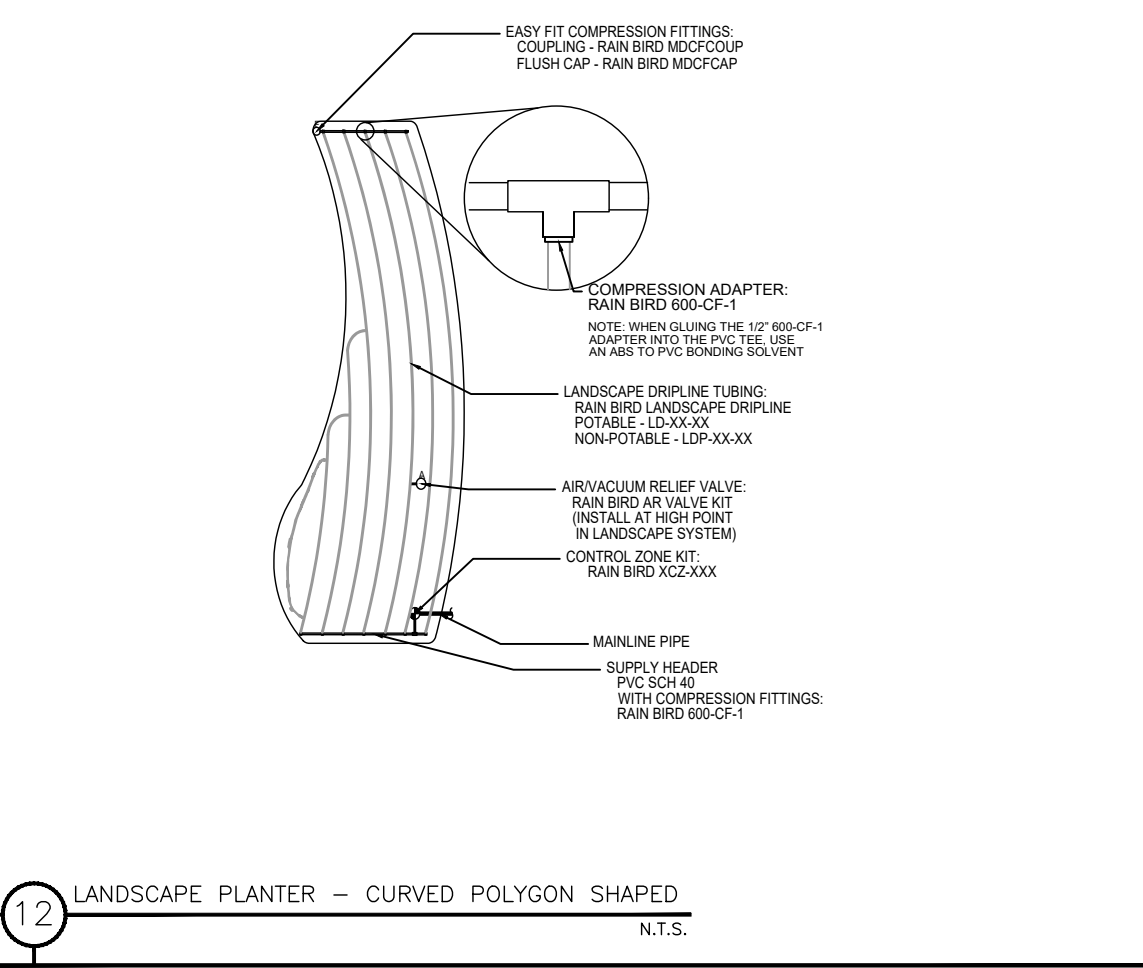
9 LANDSCAPE DRIPLINE FLUSH POINT
NON-POTABLE SYSTEM N.T.S.



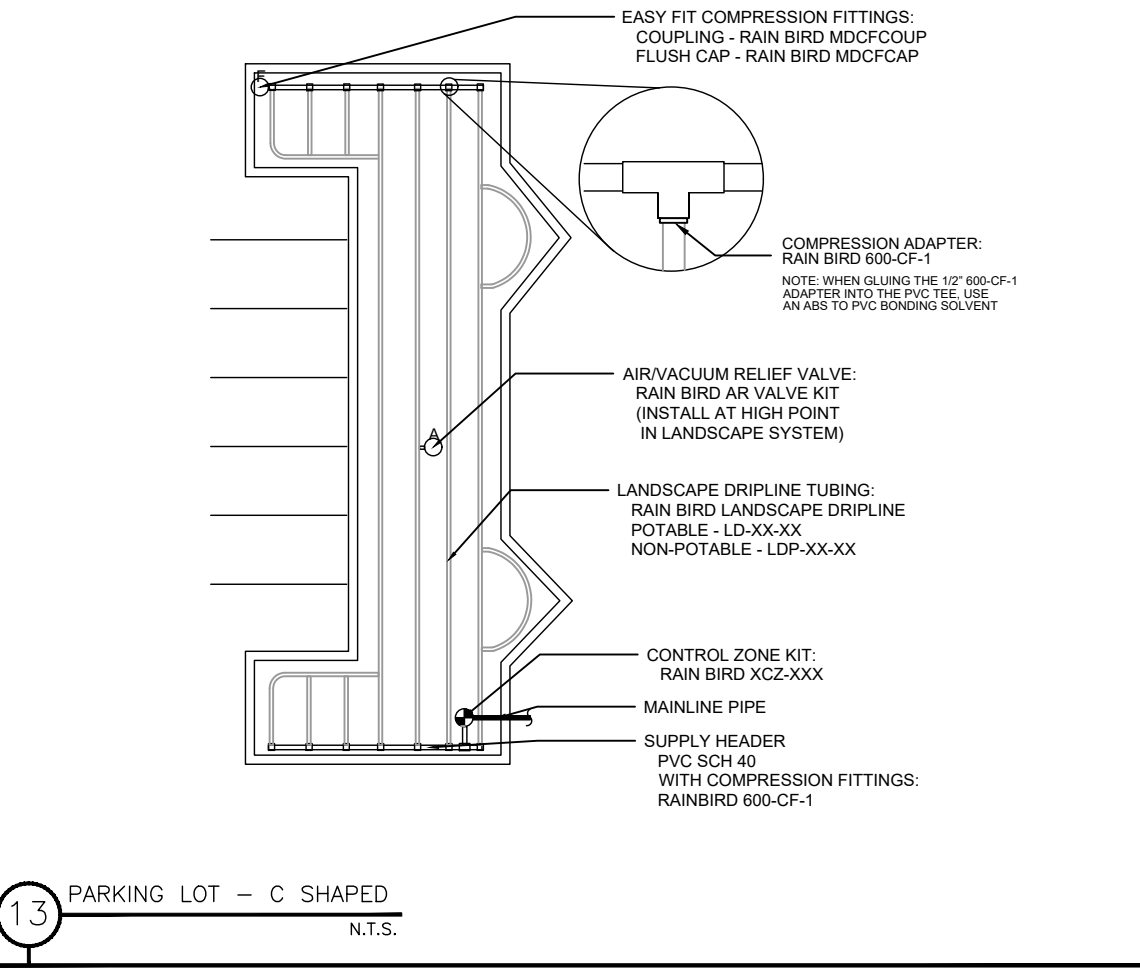
10 LANDSCAPE PLANTER - ODD SHAPED
N.T.S.



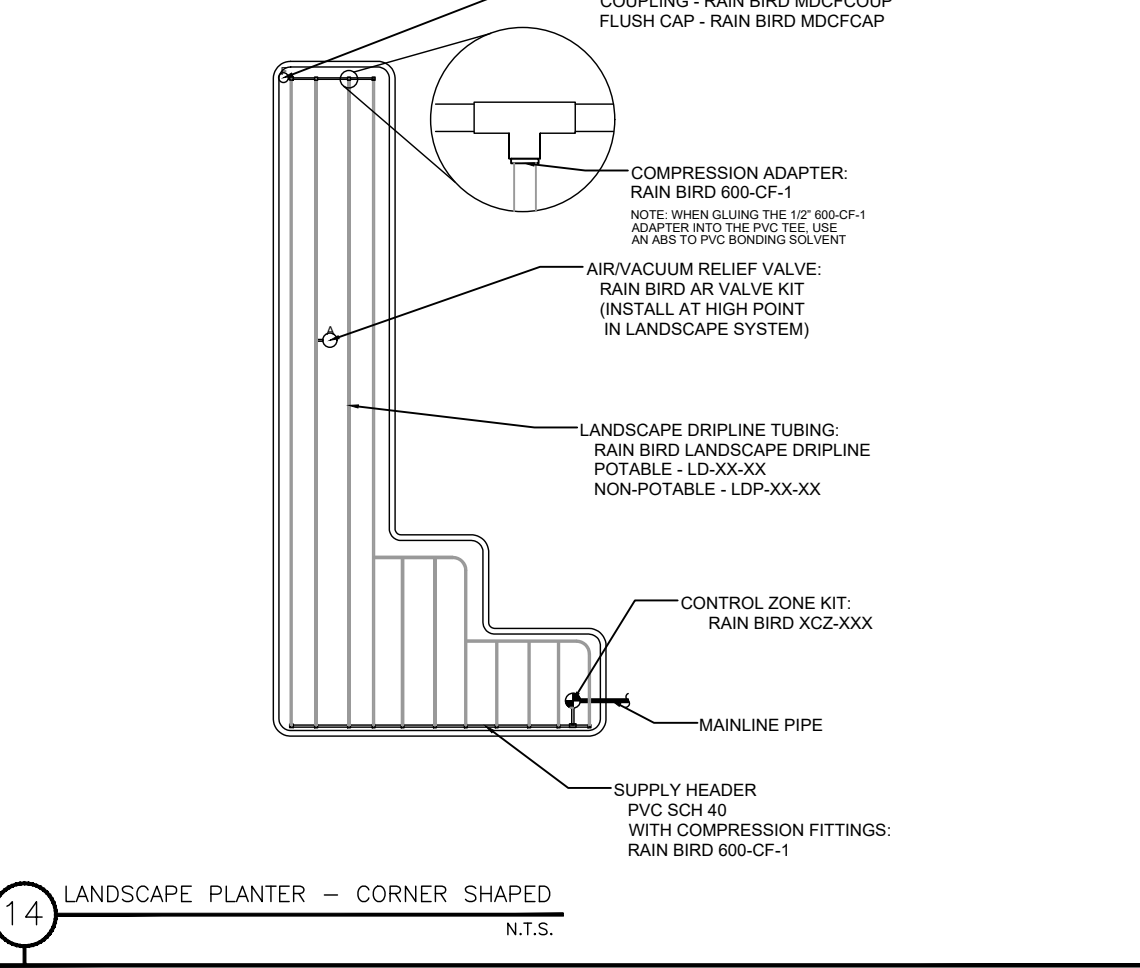
11 PARKING LOT - DOGBONE SHAPED
N.T.S.



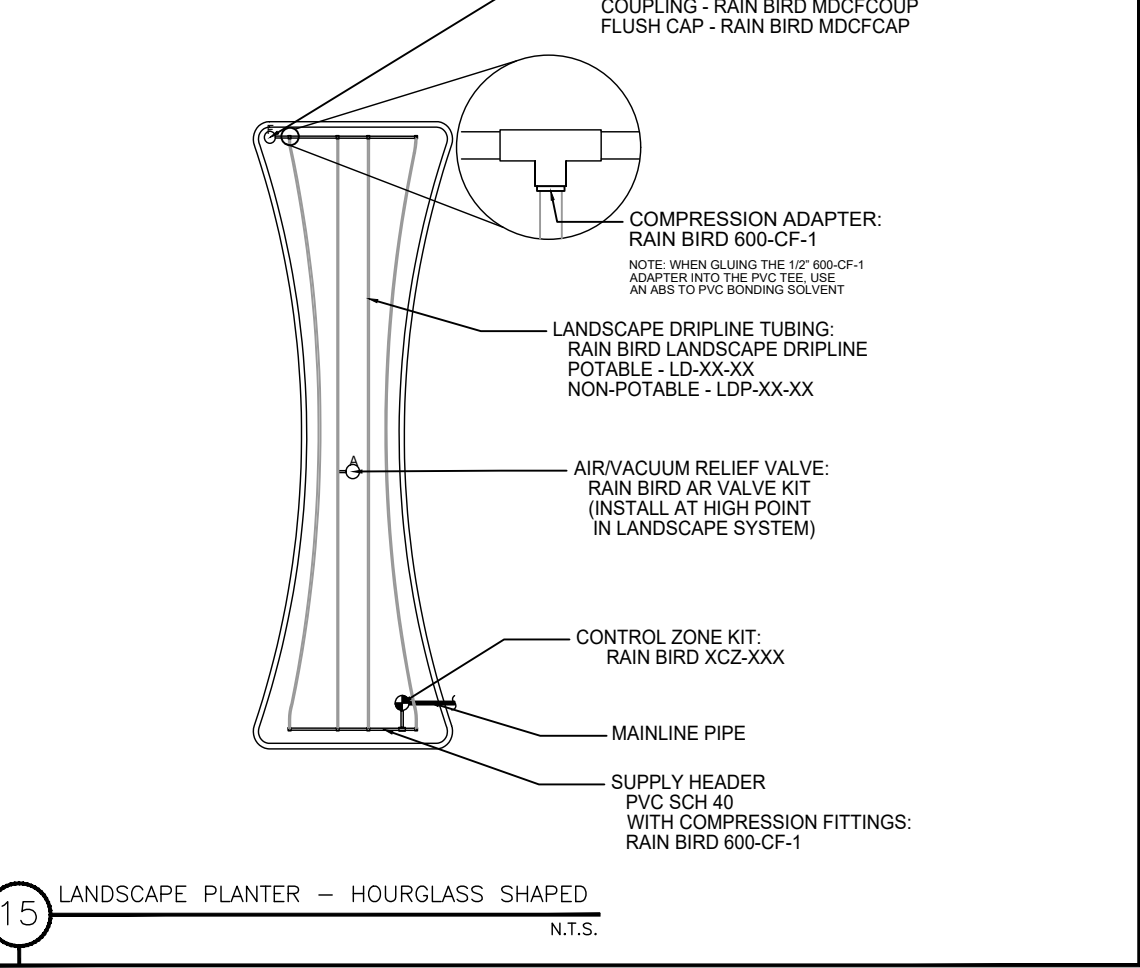
12 LANDSCAPE PLANTER - CURVED POLYGON SHAPED
N.T.S.



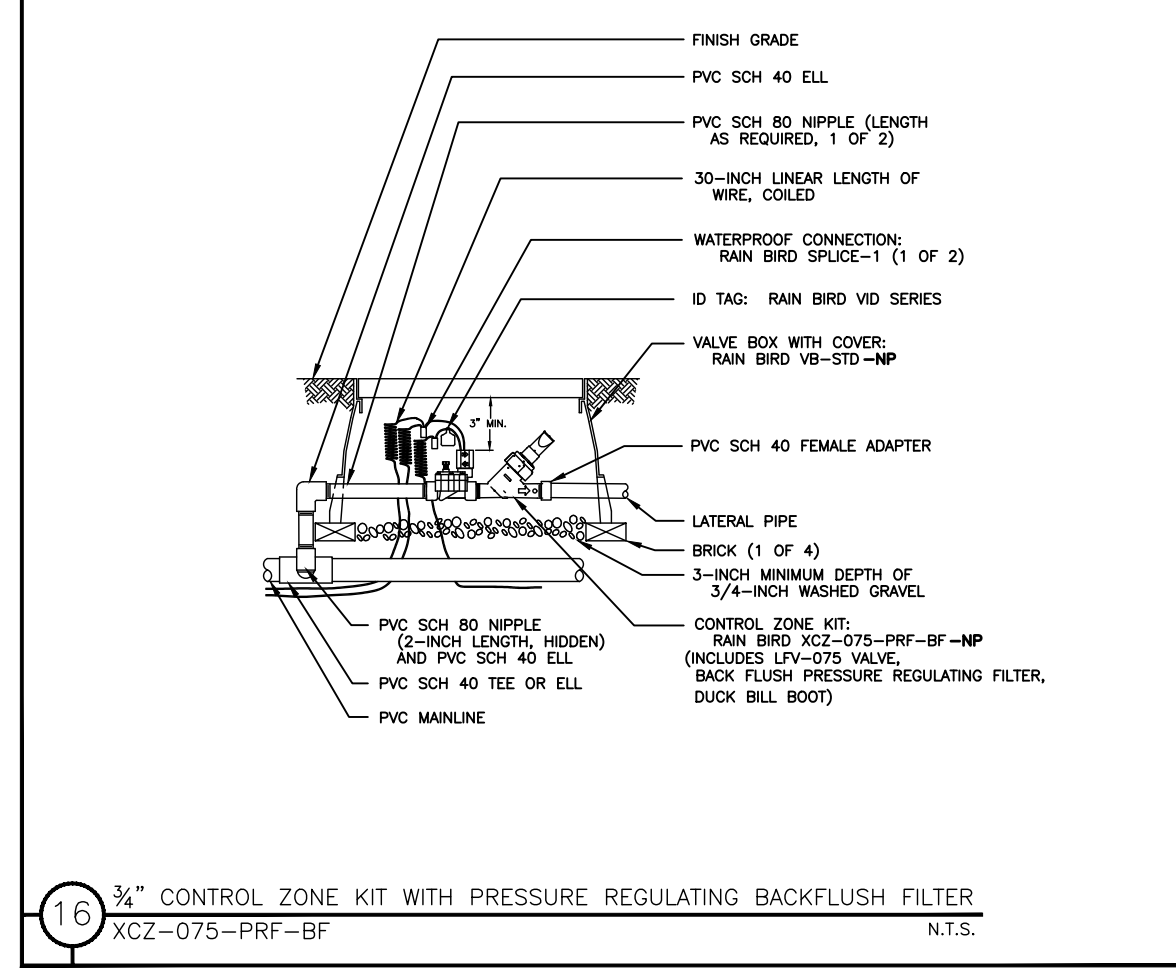
13 PARKING LOT - C SHAPED
N.T.S.



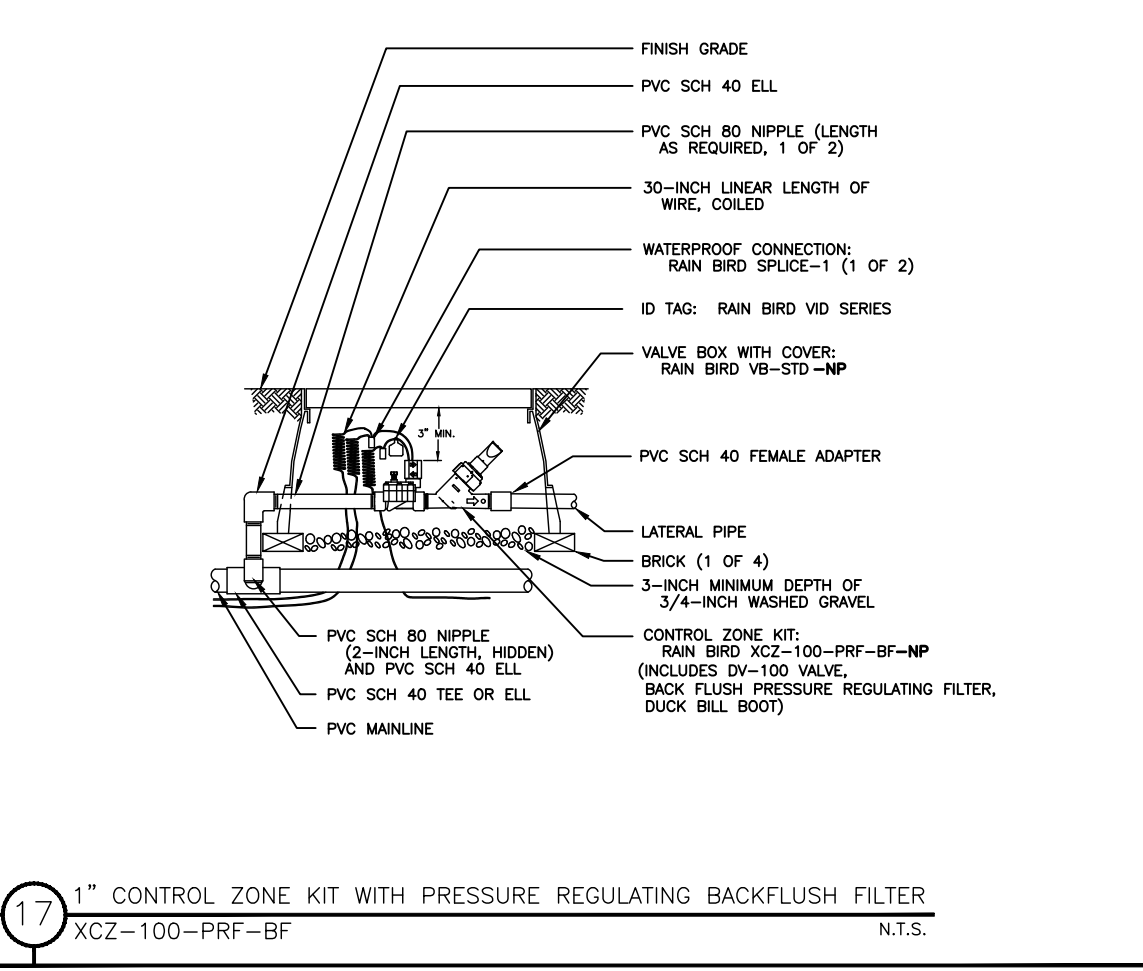
14 LANDSCAPE PLANTER - CORNER SHAPED
N.T.S.



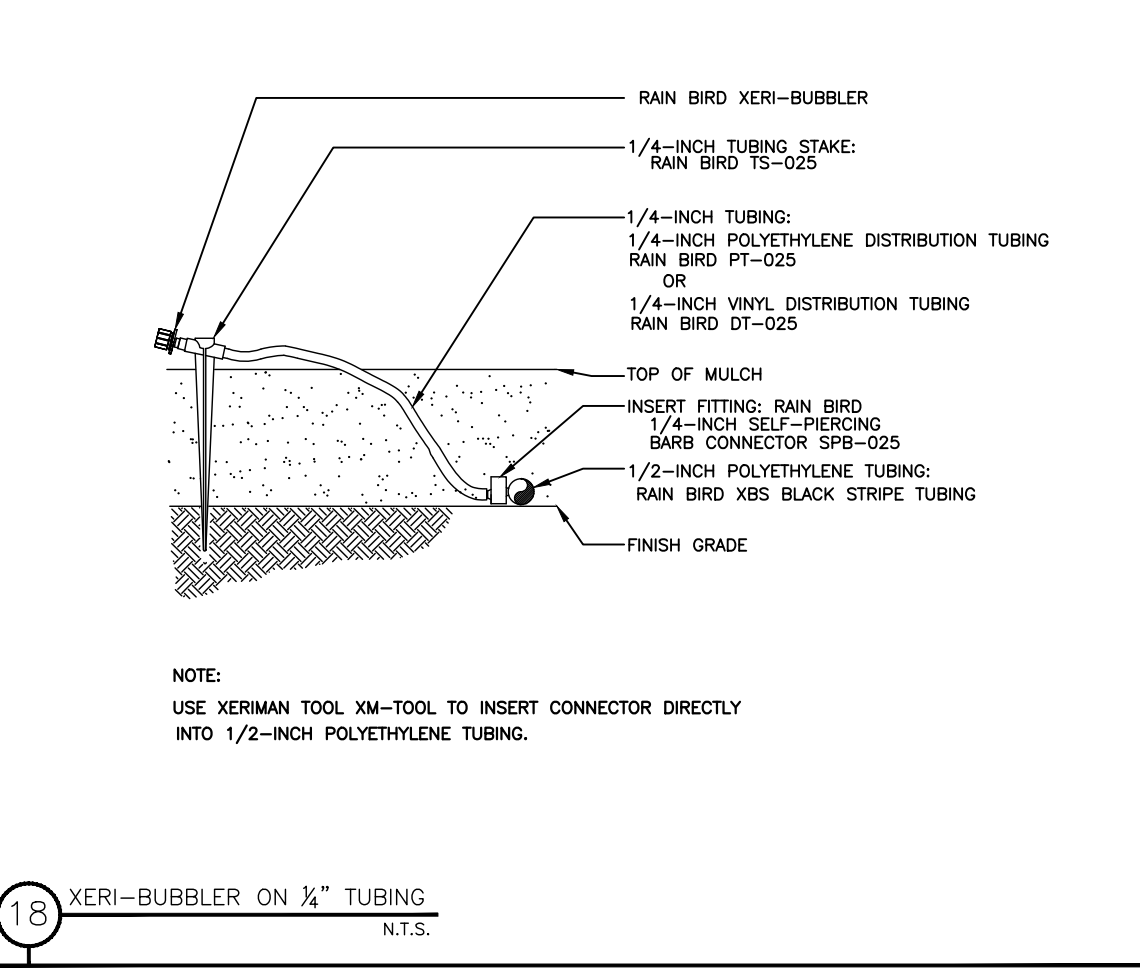
15 LANDSCAPE PLANTER - HOURGLASS SHAPED
N.T.S.



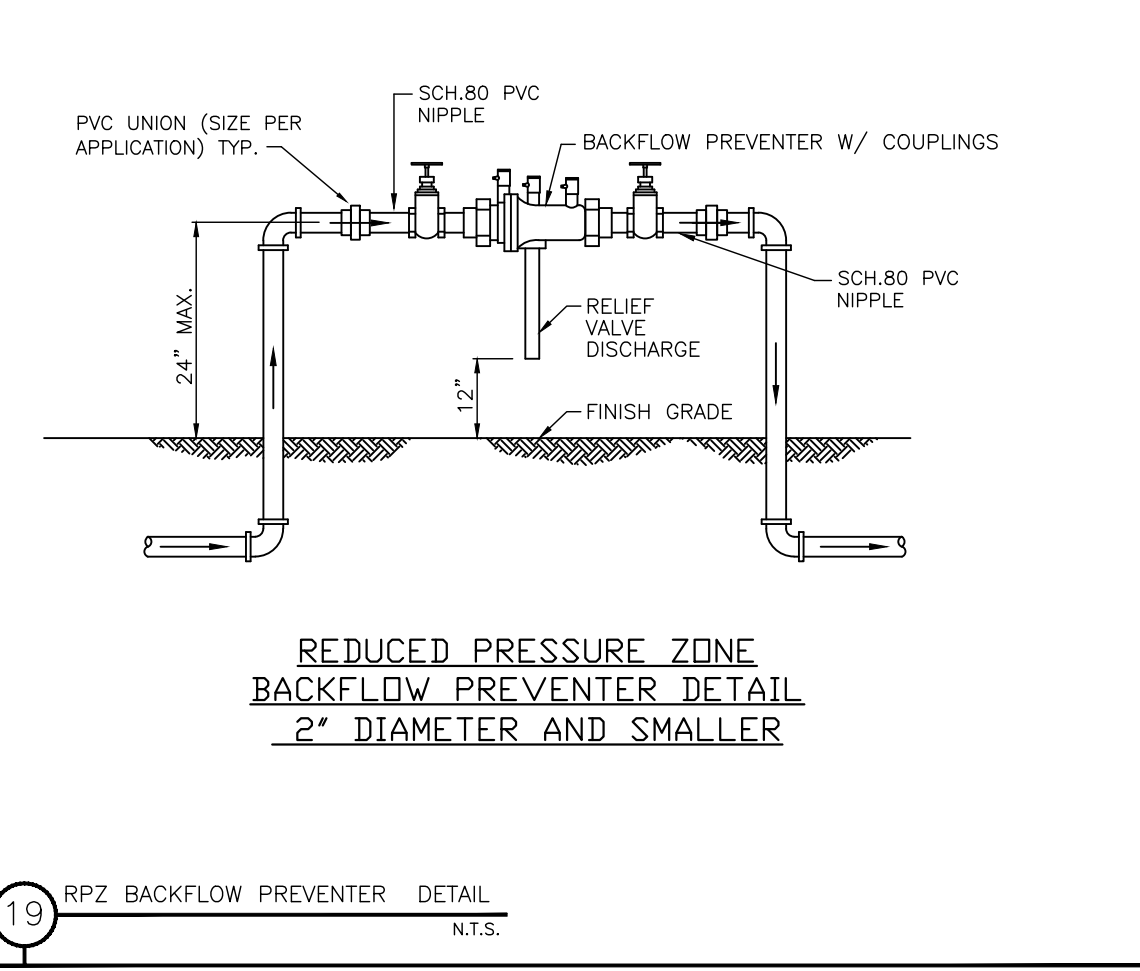
16 3/4" CONTROL ZONE KIT WITH PRESSURE REGULATING BACKFLUSH FILTER
XCZ-075-PRF-BF N.T.S.



17 1" CONTROL ZONE KIT WITH PRESSURE REGULATING BACKFLUSH FILTER
XCZ-100-PRF-BF N.T.S.



18 XERI-BUBBLER ON 1/2" TUBING
N.T.S.



19 RPZ BACKFLOW PREVENTER DETAIL
N.T.S.

LANDSCAPE ARCHITECT
Robert R. Buchanan LA0000932
Landscape Dynamics Construction Co., Inc. hereby reserves the right to modify or alter any portion of these plans, specifications, and details, without notice, if it is deemed necessary for the proper installation, operation, or maintenance of the system. The contractor shall be responsible for obtaining the appropriate permits from the local jurisdiction.
48 HOURS BEFORE YOU DIG
CALL SUNSHINE
1-800-447-8111
IT'S THE LAW IN FLORIDA
FLORIDA LAW REQUIRES
EACH CONTRACTOR TO NOTIFY
THE STATE OF ANY FACILITIES
DEPT. OF TRANSPORTATION
IF THE FACILITIES ARE LESS THAN TWO
MILES FROM THE CONSTRUCTION
CONTRACTOR MUST REVIEW
ALL GENERAL LANDSCAPE
NOTES PRIOR TO BIDDING AND
CONSTRUCTION
Hovel Construction, LLC
Orlando, FL 32819

LANDSCAPE
Dynamic
LANDSCAPE ARCHITECTS AND PLANNERS, LLC

www.hovelandscapedynamics.com
Phone: 407-579-8111 - Email: ready@hovelandscapedynamics.com
Irrigation Details
The View Deltona
City of Deltona, Florida

P.O. BOX 2852 - Winter Park, Florida 32790-2852
REVISIONS
1. 6/10/22 Comments
2. 8/1/22 Base
3. 4. 5. 6. 7. 8.

DATE: 12-20-21
JOB #: 2021-029
PERMIT #
DRAWN BY: BRB
FILE NAME: IRRIGATION
SCALE: N.T.S.

IR200